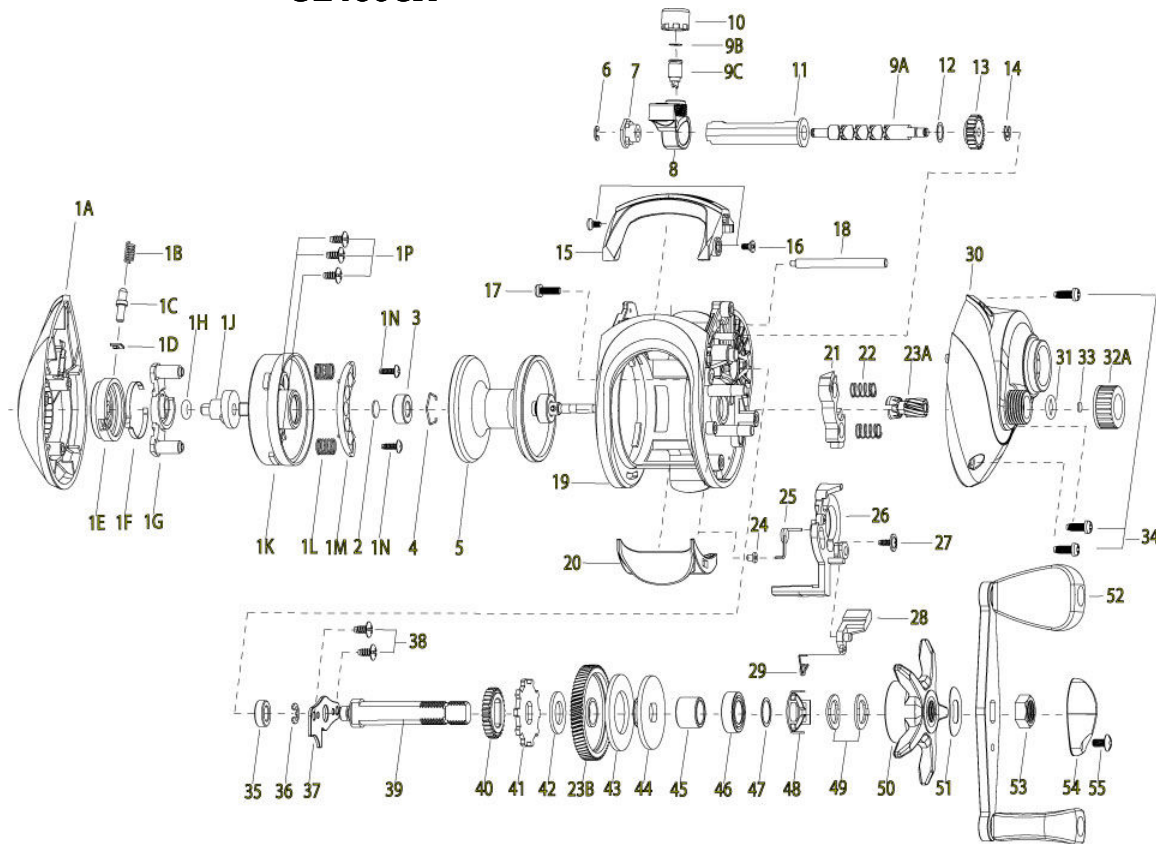


# QUANTUM<sup>®</sup>

## Ultra

### UL460CX

For Parts and Service  
 Call 1-888-404-1119  
 www.mikesreelrepair.com



Quantum Ultra UL460CX Baitcast Reel Part List					
Key #	Description	Part No.	Key #	Description	Part No.
1	Palm Side Cover Kit	NW4023-01	21	Pinion Yolk	NW025-01
1A	Palm Side Cover Assembly	N/A	22	Pinion Yolk Spring	KW040-01
1B	Locking Lever Spring	N/A	23	Gear Kit	NW4011-01
1C	Palm Side Locking Lever	N/A	23A	Pinion Gear	N/A
1D	Locking Pin Retainer	N/A	23B	Drive Gear	N/A
1E	Cast Control Dial	N/A	24	Release Slider Spring Bushing	MW103-01
1F	Control Dial Clicker Spring	N/A	25	Release Slider Spring	KW104-01
1G	Slide Cam "A"	N/A	26	Release Slider	NW039-01
1H	Control Dial Friction Ring	N/A	27	Release Slider Screw	KW125-01
1J	Slide Cam "B"	N/A	28	Kick Lever	NW077-01
1K	Spool Cover	N/A	29	Kick Lever Spring	NW097-01
1L	Magnet Plate Spring	N/A	30	Gear Side Cover Assembly	NW324-01
1M	Magnet Plate Assembly	N/A	31	Spool Tension Knob O-Ring	NW101-01
1N	Magnet Plate Screw	N/A	32	Spool Tension Knob Kit	NW4033-02
1P	Spool Cover Screw	N/A	32A	Spool Tension Knob	N/A
2	Spool Shaft Washer (Palm Side)	QW032-04	33	Spool Tension Washer	WW032-01
3	Spool Shaft Ball Bearing (Palm Side)	QV017-01	33	Spool Tension Washer	WW032-01
4	Bearing Retainer Ring	HV080-01	34	Gear Side Cover Screw "B"	WW107-03
2	Spool Shaft Washer (Palm Side)	QW032-04	35	Crank Shaft Bearing (Frame Side)	SW017-01
3	Spool Shaft Ball Bearing (Palm Side)	QV017-01	36	Crank Shaft E-Clip	QW120-01
4	Bearing Retainer Ring	HV080-01	37	Crank Shaft Retainer Plate	KW002-01
5	Spool Assembly	NW321-02	38	Crank Shaft Retainer Plate Screw	QW125-02
6	Worm Shaft E-Clip (Palm Side)	NX090-01	39	Crank Shaft	NW008-01
7	Worm Shaft Bushing	KW067-01	40	Worm Shaft Drive Gear	ZW112-01
8	Line Guide Carrier Assembly	NW347-02	41	Trip Ratchet	NW083-01
9	Worm Shaft Kit	KW4072-01	42	Trip Ratchet Washer	QW111-01
9A	Worm Shaft	N/A	43	Drag Washer	UX059-01
9B	Line Guide Pawl Washer	N/A	44	Drag Key Washer	KW045-01
9C	Line Guide Pawl	N/A	45	One Way Clutch Sleeve	NW052-01
10	Line Guide Pawl Screw	KW007-01	46	Crank Shaft Bearing (Handle Side)	TW058-02
11	Worm Shaft Guide	KW016-01	47	Star Drag Washer	ZW032-01
12	Worm Shaft Washer (Gear Side)	KW035-01	48	Star Drag Clicker Spring Assembly	ZW4114-01
13	Worm Shaft Pinion Gear	HV085-01	49	Star Drag Spring Washer	JX046-01
14	Worm Shaft E-Clip (Gear Side)	NX090-01	50	Star Drag Assembly	NW355-01
15	Front Support	NW099-01	51	Handle Spring Washer	QW054-01
16	Front Support Screw	MW107-01	52	Handle Assembly	NW318-01
17	Gear Side Cover Screw "A"	BV123-01	53	Handle Nut	NW003-01
18	Pillar	KW061-01	54	Handle Nut Retainer	KV034-02
19	Frame	N/A	55	Handle Nut Retainer Screw	QW123-01
20	Thumb Bar	NW142-01			