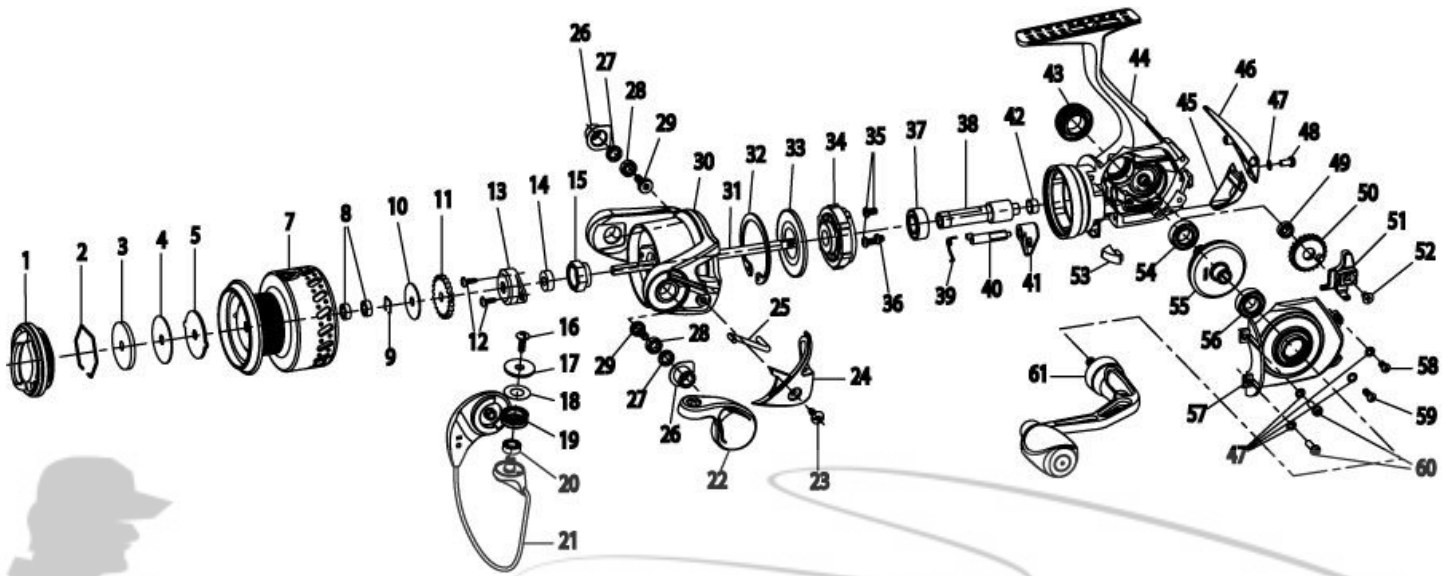


# QUANTUM®

## Tour Edition

### TE20PTiAS



**TOUR EDITON SPINNING REEL Part List**

Key #	Description	Part No.		Key #	Description	Part No.	
		TE20				TE20	
1	Drag Knob Assembly	SK332-11		32	Clutch Retaining Ring		TK060-01
2	Retainer Ring	RQ038-01		33	Clutch Seal Plate		TK166-01
3	Drag Washer "D"	SQ080-01		34	Clutch Unit		BG463-01
4	Drag Washer "B"	RQ033-01		35	Pinion Bearing Screw "A"		TK057-01
5	Drag Washer "A"	RQ081-01		36	Pinion Bearing Screw "B"		TK057-11
6	Drag Washer "C"	N/A		37	Pinion Ball Bearing		BH028-01
7	Spool Assembly	SK321-11		38	Pinion		RQ011-01
8	Spool Ball Bearing	EH158-01		39	Stopper Cam Spring		TK089-01
9	Bearing Retainer Ring	BG080-01		40	Stopper Cam		TK090-01
10	Spool Adjust Washer	PT030-01		41	Stopper Lever		RQ059-01
11	Click Gear	RQ037-01		42	Pinion Bushing		RQ141-03
12	Rotor Nut Lock Screw	RK094-01		43	Handle Screw Assembly		BG354-02
13	Rotor Nut Cover	SK214-01		44	Body Assembly		SK301-11
14	Main Shaft Bushing	SK213-01		45	Body Rear Cover "Bottom"		SK140-55
15	Rotor Nut	SK006-01		46	Body Rear Cover "Top"		SK140-03
16	Line Roller Screw	AQ108-01		47	Side Cover Screw Washer		RQ142-01
17	Line Roller Collar	BG104-01		48	Side Cover Screw "D"		RQ057-11
18	Line Roller Washer	DH102-01		49	O/S Gear Ball Bearing		EH158-01
19	Line Roller	CH004-01		50	O/S Gear		RQ053-51
20	Line Roller Balling Bearing	GH202-01		51	O/S Slider		RQ025-01
21	Bail Assembly	BG347-01		52	Main Shaft Screw		RQ100-01
22	Arm Lever Assembly	BG307-01		53	Trip Ramp		SK119-01
23	A/L Cover Screw	GU077-01		54	Body Ball Bearing		CH028-01
24	Armler Cover	SK087-04		55	Drive Gear Assembly		QT312-01
25	Kick Lever	SK019-01		56	Side Cover Ball Bearing		CH028-01
26	Bail Pivot Insert	TK112-01		57	Side Cover Assembly		SK323-11
27	Bail Pivot Bushing	TK109-01		58	Side Cover Screw "C"		SK057-11
28	Bail Pivot Ball Bearing	EH158-01		59	Side Cover Screw "B"		SK057-01
29	Bail Pivot Screw	TK111-01		60	Side Cover Screw "A"		RQ057-04
30	Rotor Assembly	SK309-11		61	Handle Assembly		BG318-01
31	Main Shaft	RQ015-01					