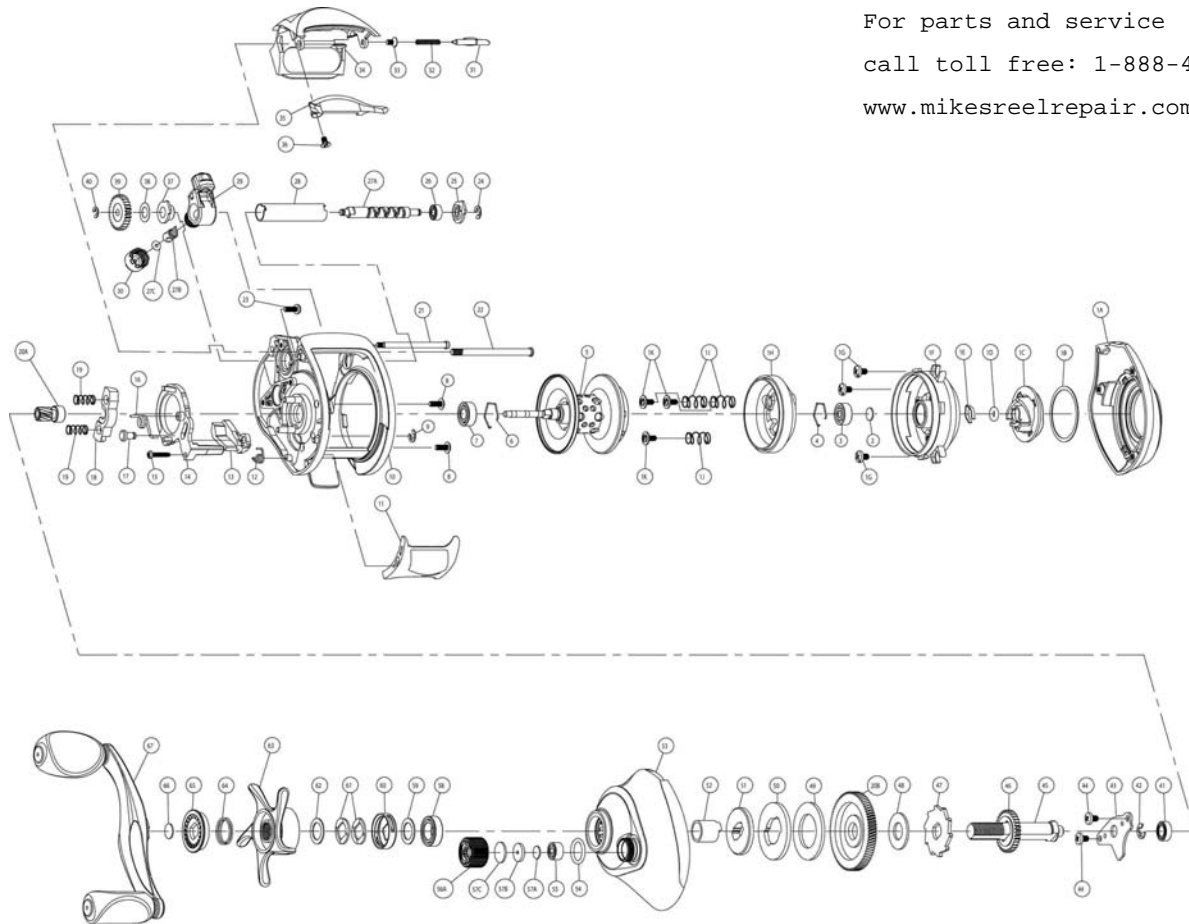


# Tour Edition PT Parts Diagram - Left Hand - TE1161PT / TE1171PT

## ORDERING PARTS

Refer to the parts list and diagram for your model. Locate the part you need and identify the key number for the part you wish to order for your model. Always state the model number, part number, part description and quantity on your orders.



For parts and service

call toll free: 1-888-404-1119

[www.mikesreelrepair.com](http://www.mikesreelrepair.com)

Key No.	Description	TE1161PT	TE1171PT
1	Palm Side Cover Kit include	VX4023-03	VX4023-02
	1A - Palm Side Cover Assembly		
	1B - Centrifugal Dial Washer		
	1C - Centrifugal Dial Assembly		
	1D - Centrifugal Dial Friction Ring		
	1E - Centrifugal Dial Spring		
	1F - Spool Cover		
	1G - Spool Cover Screw		
	1H - Brake Ring Assembly		
	1J - Brake Ring Slider Spring		
	1K - Brake Ring Retainer Screw		
	1L - Spool Cover Screw		
	2- Spool Tension Shim		
	3- Spool Shaft Ball Bearing (Palm)		
	4- Clip Ring		
2	Spool Tension Shim	←	←
3	Spool Shaft Ball Bearing (Palm)	←	←
4	Clip Ring	←	←
5	Spool Assembly	UX321-06	
6	Clip Ring	←	←
7	Spool Shaft Ball Bearing (Gear)	←	←
8	Gear Side Cover Screw - B	←	←
9	E-Clip	←	←
10	Frame	VX001-03	VX001-02
11	Thumb Bar	VX009-01	←
12	Kick Lever Spring	MX097-01	←
13	Kick Lever	VX077-01	←
14	Release Slider	VX039-01	←
15	Thumb Bar Screw	←	←
16	Release Slider Spring	RX104-01	←
17	Release Slider Guide Pin	←	←
18	Pinion Yoke	MX025-01	←
19	Yoke Spring	←	←
20	Gear Kit include	UX4011-02	VX4011-02
	20A - Pinion Gear Assembly		
	20B - Drive Gear		
21	Stabilizer Bar - B	←	←
22	Stabilizer Bar - A	←	←
23	Gear Side Cover Screw - A	←	←
24	E-Clip	←	←
25	Bearing Retainer	←	←
26	Worm Shaft Ball Bearing	←	←
27	Worm Shaft Kit Include	←	←
	27A - Worm Shaft		
	27B - Line Guide Pawl		
	27C - Carrier Washer		

Key No.	Description	TE1161PT	TE1171PT
28	Worm Shaft Guide	←	←
29	Line Guide Carrier	←	←
30	Line Guide Carrier Screw	←	←
31	Side Cover Locking Lever	TX119-02	←
32	Side Cover Locking Lever Spring	←	←
33	Hood Screw	←	←
34	Hood	VX27-03	VX027-02
35	Front Support	VX099-02	VX099-01
36	Front Support Screw	←	←
37	Worm Shaft Bushing (Gear)	←	←
38	O/S Pinion Gear Washer	←	←
39	O/S Pinion Gear	←	←
40	E-Clip	←	←
41	Crank Shaft Bearing - Lower	←	←
42	E-Clip	←	←
43	Crank Shaft Retainer	←	←
44	Crank Shaft Retainer Screw	←	←
45	Crank Shaft	UX008-02	←
46	O/S Drive Gear	←	←
47	Trip Ratchet	←	←
48	Trip Ratchet Washer	←	←
49	Drag Disc	←	←
50	Drag Key Washer	←	←
51	Link	←	←
52	One Way Bearing Sleeve	←	←
53	Gear Side Cover Assembly	VX324-03	VX324-02
54	Tension Knob O-Ring	←	←
55	Tension Knob Ball Bearing	←	←
56	Spool Tension Kit Include	←	←
	56A - Spool Tension Knob Assembly		
	57 - Spoon Tension Washer Kit		
57	Spool Tension Washer Kit Include	←	←
	57A - Spool Tension Washer		
	57B - Spool Tension Collar		
58	Crank Shaft Ball Bearing	←	←
59	Star Drag Washer	←	←
60	Drag Click Spring Assembly	←	←
61	"Spring ""D"" Washer"	←	←
62	Star Drag Washer	←	←
63	Star Drag Assembly	VX355-03	VX355-02
64	Handle Ratchet Spring	←	←
65	Handle Ratchet	VX054-01	←
66	Handle Washer	←	←
67	Handle Assembly	VX318-02	←