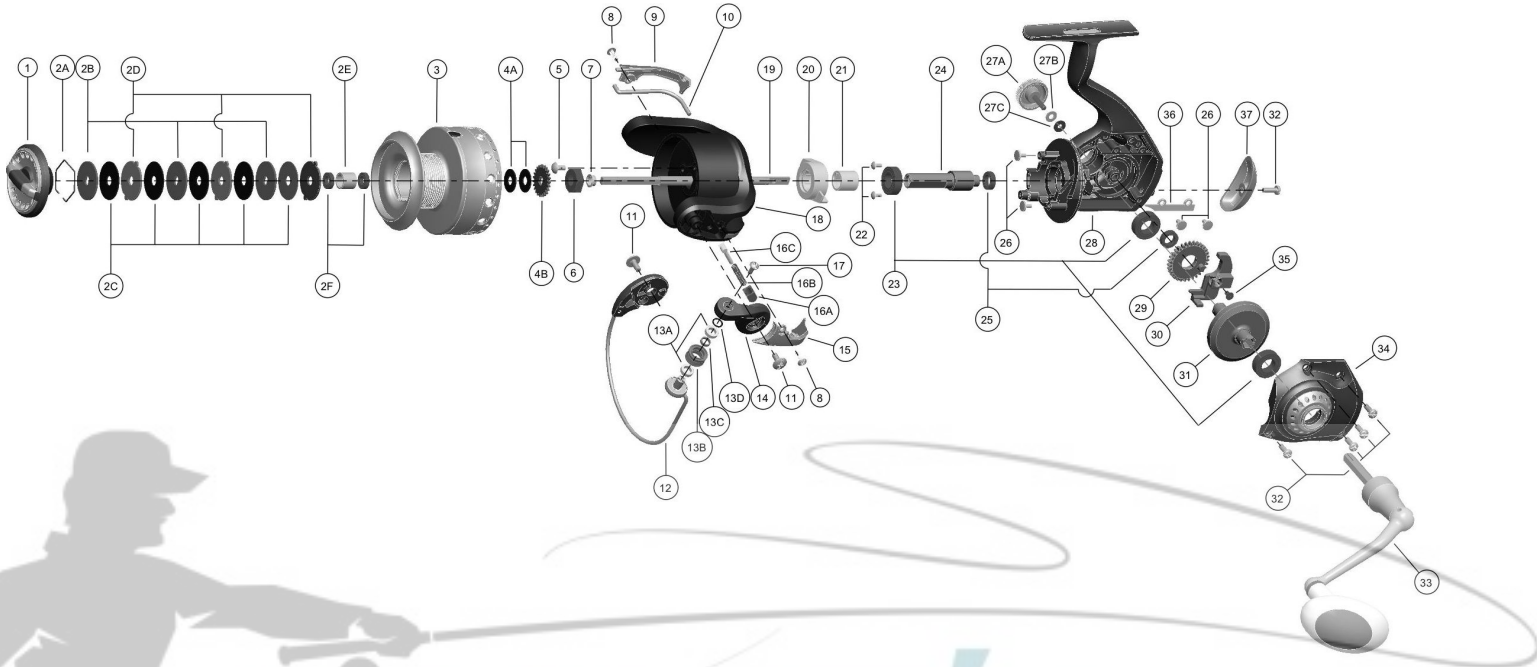


# QUANTUM®

## Surge SU60F



Quantum Surge SU60F Spinning Reel Part List

Key #	Description	Part No.	Key #	Description	Part No.
1	Drag Knob Assembly	TP332-51	16	Bail Spring Kit	TP4022-02
2	Drag Washer Kit includes:	TP4080-05	16A	Bail Spring Holder	N/A
	2A - Drag Washer Retainer	N/A	16B	Bail Spring	N/A
	2B - Drag Washer 'D'	N/A	16C	Bail Spring Pin	N/A
	2C - Drag Friction Washer	N/A	17	Line Roller Screw	TP108-01
	2D - Keyed Drag Washer	N/A	18	Rotor Assembly	N/A
	2E - Spool Bushing	N/A	19	Main Shaft	TP015-02
	2F - Ball Bearing, 6 ID x 10 OD x 2.5 W	N/A	20	Clutch Assembly	UP060-01
3	Spool Assembly	TP321-53	21	A.R. Sleeve	TP139-02
4	Click Gear Kit	TP4037-01	22	Pinion Bearing Screw	TP079-01
	4A - Center Shaft Washer	N/A	23	Ball Bearing, 9 ID x 17 OD x 5 W	TP157-02
	4B - Click Gear	N/A	24	Pinion	TP011-01
5	Rotor Nut Lock Screw	TP094-01	25	Ball Bearing, 7 ID x 11 OD x 3 W	TP027-02
6	Rotor Nut	TP006-01	26	A.R. Stopper Screw	TP078-01
7	Main Shaft Bushing	TP214-01	27	Handle Cap Screw Assembly	TP4073-51
8	Rotor Cover Screw	TP077-02		29A - Handle Cap Screw	N/A
9	Bail Holder Cover	TP088-05		29B - Handle Cap Screw Washer 'A'	N/A
10	Kick Lever	TP019-02		29C - Handle Cap Screw Washer 'B'	N/A
11	Pivot Screw	TP044-01	28	Body Assembly	N/A
12	Bail Assembly	TP347-05	29	O/S Gear	TP053-01
13	Line Roller Kit includes:	TP4202-01	30	O/S Slider	TP025-01
	13A - Line Roller Bushing	N/A	31	Drive Gear	TP012-01
	13B - Line Roller	N/A	32	Side Cover Screw	TP057-01
	13C - Line Roller Washer	N/A	33	Handle Assembly	UP318-02
	13D - Line Roller Shoulder Washer	N/A	34	Side Cover Assembly	N/A
14	Arm Lever	TP007-04	35	Main Shaft Screw	TP100-01
15	Arm Lever Cover	TP087-05	36	O/S Slider Plate	TP026-01
			37	Body Rear Cover	TP140-05