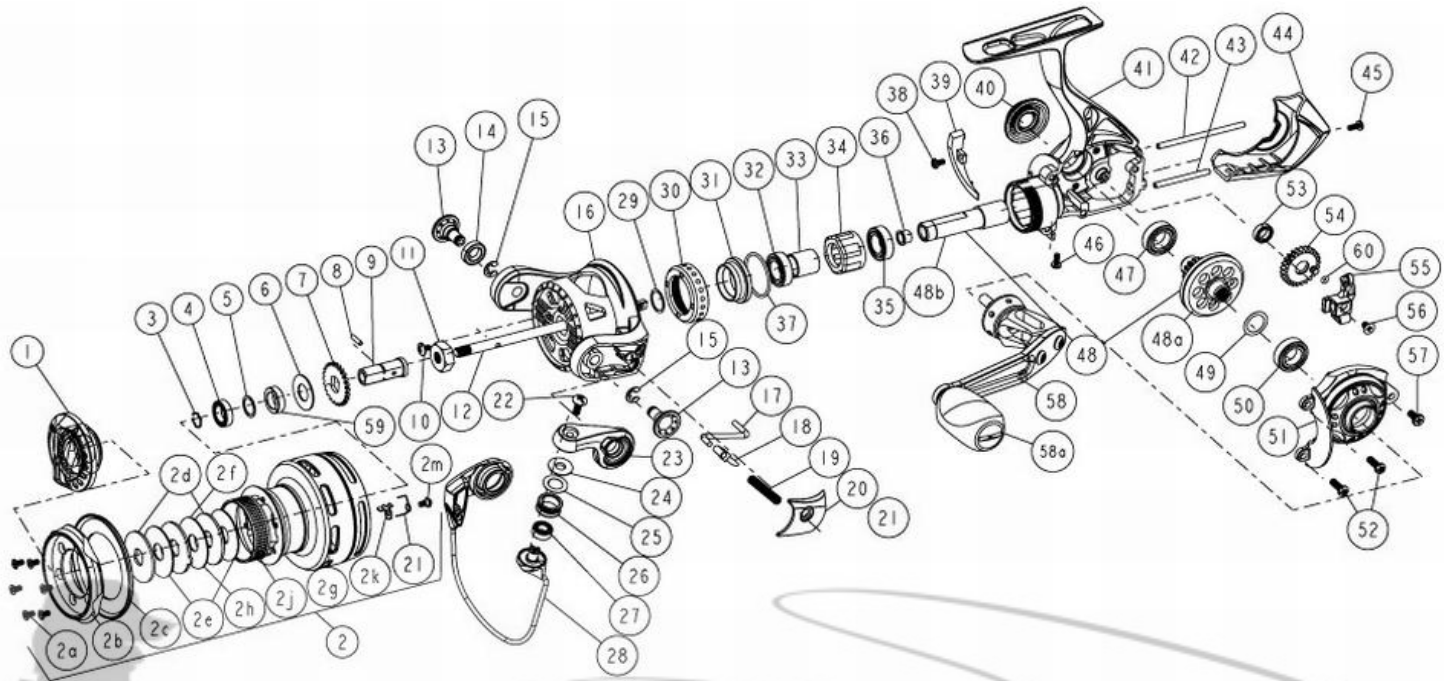


# QUANTUM<sup>®</sup> Smoke SL30PTS



Quantum Smoke SL30PTS Spinning Reel Part List

Key #	Description	Qty	Part No.	Key #	Description	Qty	Part No.
1	Drag Knob Assembly	1	WAA332-51	27	Line Roller Ball Bearing	1	GH202-01
2	Spool Assembly	1	VAA321-26	28	Bail Assembly	1	VAA347-01
2a	Spool Cap Screws	6	CF107-01	29	Rotor Adjust Washer	1	BAA110-02
2b	Spool Cap	1	VAA144-71	30	Clutch Bearing Cap	1	UAA040-04
2c	Spool Lip	1	VAA143-02	31	Clutch Bearing Adapter	1	UAA190-01
2d	Drag Washer "D"	2	UAA080-01	32	Top Pinion Ball bearing	1	TW058-03
2e	Drag Washer "B"	2	UAA033-01	33	Sleeve	1	UAA139-01
2f	Drag Washer "A"	1	UAA081-01	34	One Way Clutch / <b>SEE ITEM #62</b>	1	UAA063-01
2g	Spool	1	VAA021-26	35	Bottom Pinion Ball Bearing	1	TW058-03
2h	Drag Washer "C"	1	UAA033-02	36	Pinion Bushing	1	BAA213-02
2j	Braid Band	1	AAB258-01	37	O-Ring	1	VAA101-01
2k	Spool clicker	1	AAA103-01	38	Trip Ramp Screw	1	UAA123-04
2l	Spool clicker spring	1	BAA068-02	39	Trip Ramp	1	UAA119-01
2m	Spool clicker screw	1	CAA077-01	40	Dust Cap	1	UAA054-01
3	Retainer Ring	1	UAA038-01	41	Body Assembly	1	UAA301-05
4	Spool Ball bearing	1	CH027-01	42	O/S Guide Pin "A"	1	UAA093-02
5	Spool Ball Bearing Washer	1	UAA076-01	43	O/S Guide Pin "B"	1	UAA098-02
6	Spool Adjust Washer	1	UAA030-01	44	Body Rear Cap	1	UAA140-02
7	Clicker Gear	1	UAA037-01	45	Rear Cap Screw "A" - M2 x 5mm	1	UAA123-06
8	Adapter Pin	1	UAA134-01	46	Rear Cap Screw "B" - M2 x 5mm	1	UAA123-06
9	Shaft Drag Adapter	1	UAA117-01	47	Body Drive Gear Bearing	1	TW058-03
10	Rotor Nut Lock Screw	1	UAA094-02	48	Drive Gear Kit	1	BAA412-04
11	Rotor Nut	1	BAA006-02	48a	Drive Gear	1	BAA012-03
12	Main Shaft	1	UAA015-01	48b	Pinion Gear	1	UAA011-02
13	Rotor Arm Sleeve	2	UAA042-03	49	Drive Gear Adjust Washer	1	BAA105-04
14	Ball Bearing	1	BAA158-01	50	Sidecover Drive Gear Bearing	1	TW058-03
15	E-Clip	2	QW120-01	51	Sidecover Assembly	1	UAA323-05
16	Rotor	1	VAA009-01	52	Sidecover Screw "A" - M2.6 x 8mm	2	UAA057-02
17	Kick Lever	1	VAA019-01	53	O/S Gear Bearing	1	CT157-02
18	Bail Actuator	1	BAA031-01	54	O/S Gear Assembly	1	UAA353-01
19	Bail Spring	1	BAA022-01	55	O/S Slider	1	UAA025-01
20	Arm Lever Cover	1	VAA087-01	56	Main Shaft Screw	1	BAA100-01
21	Arm Lever Cover Screw	1	CW125-02	57	Sidecover Screw "B" - M2.6 x 6mm	1	UAA050-01
22	Line Roller Screw	1	BAA108-02	58	Handle Assembly	1	VAA318-03
23	Arm Lever	1	UAA007-01	58a	Handle Knob Cap	1	BB115-05
24	Line Roller Collar	1	CAA102-01	59	Spool Bushing	1	UAA027-01
25	Line Roller Washer	1	BAA102-01	60	O-Ring	1	UAA101-01
26	Line Roller	1	BAA004-02	62	Clutch Tool - <b>TO REMOVE CLUTCH CAP</b>	1	UAA3113-01