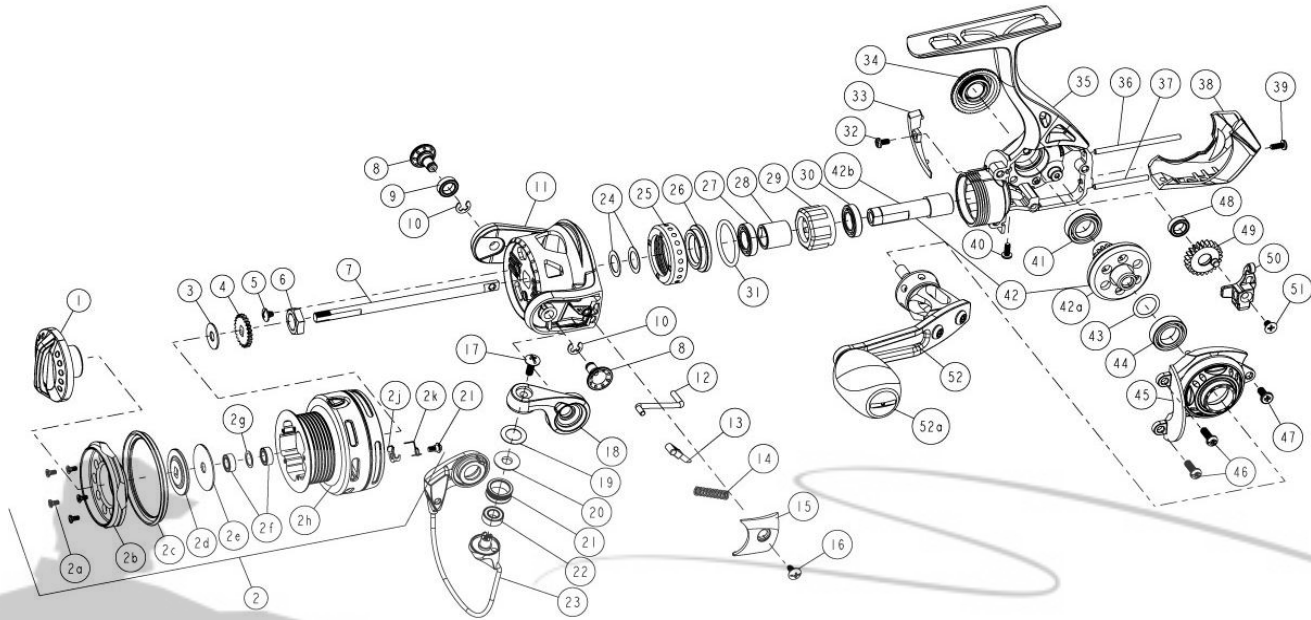


# QUANTUM<sup>®</sup>

## Smoke SL10PTi



Quantum Smoke SL10PTi Spinning Reel Part List

Key #	Description	Qty	Part No.	Key #	Description	Qty	Part No.
1	Drag Knob Assembly	1	TAA332-01	24	Rotor Adjust Washer	2	AAA110-01
2	Spool Assembly	1	TAA320-01	25	Clutch Bearing Cap	1	UAA040-02
2a	Spool Cap Screw	5	DW107-01	26	Clutch Bearing Adapter	1	TAA190-01
2b	Spool Cap	1	TAA144-51	27	Top Pinion Ball Bearing	1	TAA028-01
2c	Spool Lip	1	TAA143-02	28	Sleeve	1	TAA139-01
2d	Drag Washer "D"	1	TAA080-01	29	One Way Clutch / <b>SEE ITEM # 53</b>	1	UAA063-01
2e	Drag Washer "B"	1	TAA033-01	30	Bottom Pinion Ball Bearing	1	TAA028-01
2f	Spool Ball Bearing	2	EH158-01	31	O-Ring	1	TAA101-01
2g	Spool Ball Bearing Washer	1	AAA035-01	32	Trip Ramp Screw	1	UAA123-04
2h	Spool	1	TAA020-51	33	Trip Ramp	1	TAA119-01
2j	Spool clicker	1	AAA103-01	34	Handle Screw Cap	1	UAA054-01
2k	Spool clicker spring	1	AAA068-01	35	Body Assembly	1	TAA301-02
2l	Spool clicker screw	1	CAA077-01	36	O/S Guide Pin "A"	1	TAA093-02
3	Spool Adjust Washer	1	TAA030-01	37	O/S Guide Pin "B"	1	TAA098-02
4	Clicker Gear	1	TAA037-01	38	Body Rear Cap	1	TAA140-02
5	Rotor Nut Lock Screw	1	BAA094-02	39	Rear Cap Screw "A" - M2 x 5mm	1	UAA123-06
6	Rotor Nut	1	AAA006-02	40	Rear Cap Screw "B" - M2 x 5mm	1	UAA123-06
7	Main Shaft	1	TAA015-01	41	Body Drive Gear Bearing	1	TW058-03
8	Rotor Arm Sleeve	2	TAA042-01	42	Drive Gear Kit	1	AAA412-03
9	Ball Bearing	1	CT157-02	42a	Drive Gear	1	AAA012-02
10	E-Clip	2	NX092-01	42b	Pinion Gear	1	TAA011-02
11	Rotor	1	TAA009-01	43	Drive Gear Adjust Washer	1	BAA105-04
12	Kick Lever	1	AAA019-01	44	Sidecover Drive Gear Bearing	1	TW058-03
13	Bail Actuator	1	AAA031-01	45	Side Cover Assembly	1	TAA323-02
14	Bail Spring	1	AAA022-01	46	Side Cover Screw "A" - M2.6 x 8mm	2	UAA057-02
15	Arm Lever Cover	1	TAA087-01	47	Side Cover Screw "B" - M2.6 x 6mm	1	UAA050-01
16	Arm Lever Cover Screw	1	CW125-02	48	O/S Gear Bearing	1	CT157-02
17	Line Roller Screw	1	BAA108-02	49	O/S Gear	1	TAA053-01
18	Arm Lever	1	TAA007-01	50	O/S Slider	1	TAA025-01
19	Line Roller Collar	1	CAA102-01	51	Main Shaft Screw	1	BAA100-01
20	Line Roller Washer	1	BAA102-01	52	Handle Assembly	1	TAA318-51
21	Line Roller	1	BAA004-02	52a	Handle Knob Cap	1	BB115-01
22	Line Roller Ball Bearing	1	GH202-01	53	Clutch Tool - <b>TO REMOVE CLUTCH CAP</b>	1	UAA3113-01
23	Bail Assembly	1	TAA347-01				