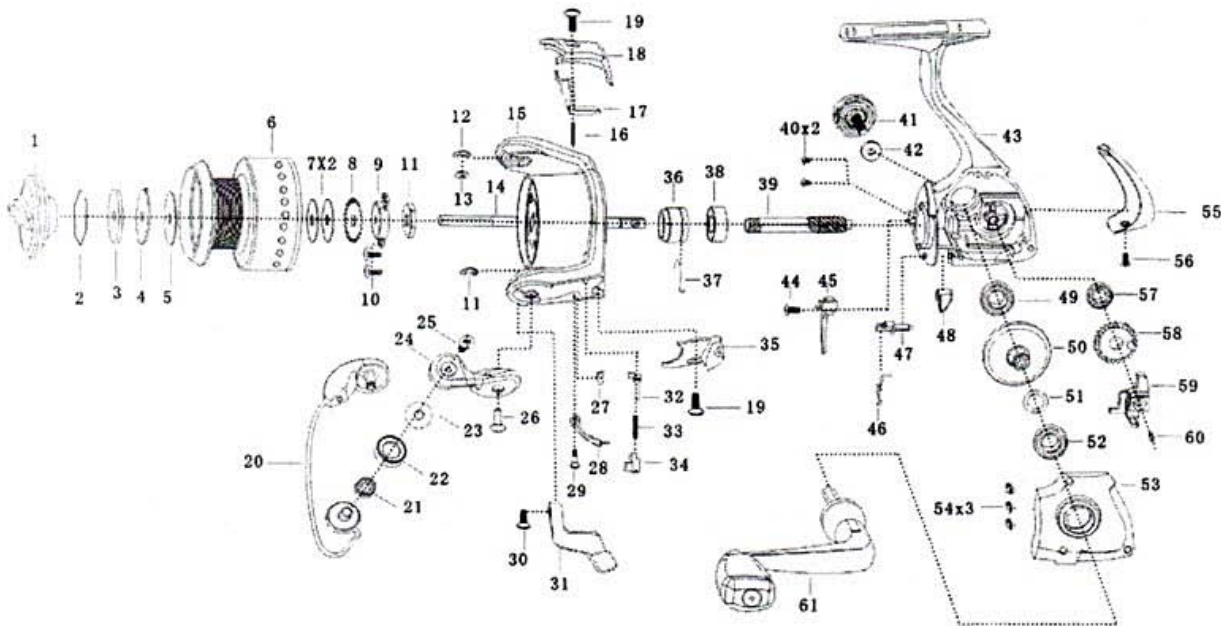


# QUANTUM

## Snapshot SLS40

For parts and service  
 call toll free: 1-888-404-1119  
 www.mikesreelrepair.com



### KEY # DESCRIPTION

- 1 DRAG KNOB ASSEMBLY
- 2 DRAG RETAINER
- 3 KEY WASHER
- 4 EARED WASHER
- 5 DRAG WASHER
- 6 SPOOL ASSEMBLY
  
- 7 SPOOL WASHER
- 8 CLICK GEAR
- 9 NUT FIXING BUSHING
- 10 SCREW
- 11 ROTOR NUT
- 12 E-CLIP
- 13 WASHER
- 14 MAIN SHAFT
- 15 ROTOR
- 16 SPRING
- 17 KICK LEVER
- 18 BAIL SEAT
- 19 SCREW
- 20 BAIL ASSEMBLY
- 21 LINE ROLLER BALL BEARING
- 22 LINE ROLLER
- 23 LINE ROLLER WASHER
- 24 ARM LEVER ASSEMBLY
- 25 LINE SLIDER SCREW
- 26 SCREW
- 27 SPRING
- 28 BAIL ARM FLIP LEVER
- 29 SCREW
- 30 SCREW
- 31 ANTI-REVERSE PLATE

### KEY # DESCRIPTION

- 32 BAIL KICK LEVER
- 33 SPRING
- 34 BAIL KICK LEVER SEAT
- 35 ARM LEVER COVER
- 36 ANTI-REVERSE RETAINER
- 37 SPRING
- 38 BALL BEARING
- 39 PINTON GEAR
- 40 SCREW
- 41 HANDLE CAP SCREW
- 42 HANDLE SCREW WASHER
- 43 BODY
- 44 ANTI-REVERSE PAWL SCREW
- 45 ANTI-REVERSE PAWL
- 46 SPRING
- 47 ANTI-REVERSE CAM
- 48 ANTI-REVERSE LEVER
- 49 BALL BEARING
- 50 DRIVE GEAR
- 51 ADJUST WASHER
- 52 BALL BEARING
- 53 BODY COVER
- 54 BODY COVER SCREW
- 55 BODY REAR COVER
- 56 BODY REAR COVER SCREW
- 57 O/S GEAR BUSHING
- 58 O/S GEAR
- 59 O/S SLIDER
- 60 MAIN SHAFT SCREW
- 61 HANDLE ASSEMBLY (INCLUDING TWO BALL BEARINGS)