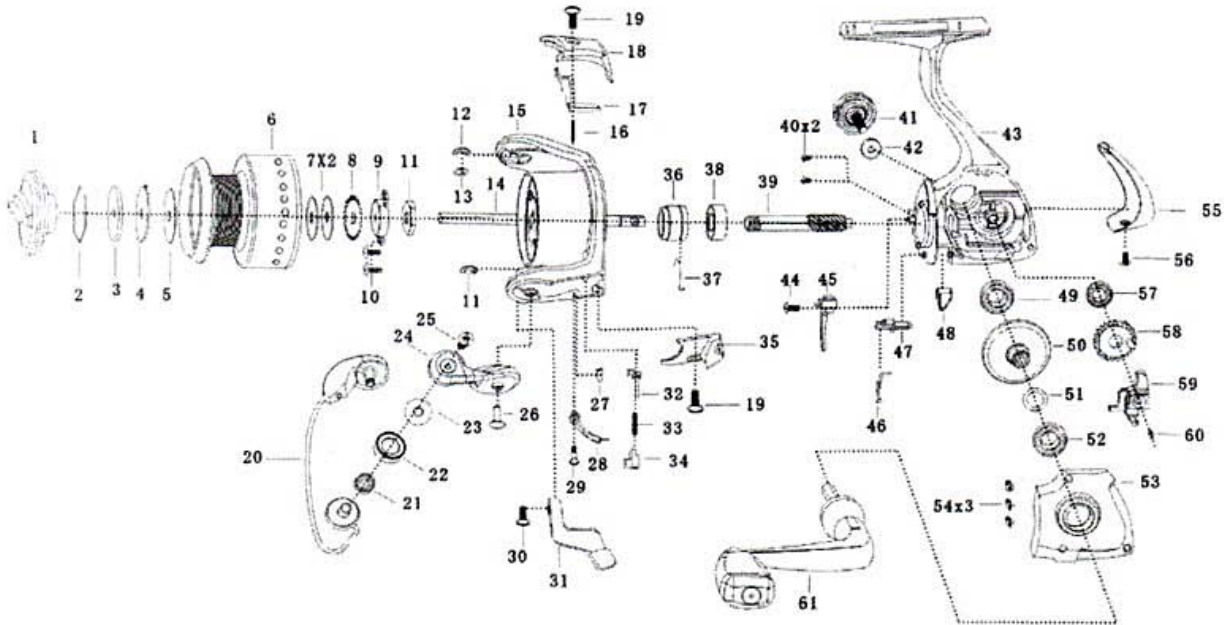


QUANTUM[®]

Snapshot SLS30

For parts and service
call toll free: 1-888-404-1119
www.mikesreelrepair.com



KEY #	DESCRIPTION
1	DRAG KNOB ASSEMBLY
2	DRAG RETAINER
3	KEY WASHER
4	EARED WASHER
5	DRAG WASHER
6	SPOOL ASSEMBLY

7	SPOOL WASHER
8	CLICK GEAR
9	NUT FIXING BUSHING
10	SCREW
11	ROTOR NUT
12	E-CLIP
13	WASHER
14	MAIN SHAFT
15	ROTOR
16	SPRING
17	KICK LEVER
18	BAIL SEAT
19	SCREW
20	BAIL ASSEMBLY
21	LINE ROLLER BALL BEARING
22	LINE ROLLER
23	LINE ROLLER WASHER
24	ARM LEVER ASSEMBLY
25	LINE SLIDER SCREW
26	SCREW
27	SPRING
28	BAIL ARM FLIP LEVER
29	SCREW
30	SCREW
31	ANTI-REVERSE PLATE

KEY #	DESCRIPTION
32	BAIL KICK LEVER
33	SPRING
34	BAIL KICK LEVER SEAT
35	ARM LEVER COVER
36	ANTI-REVERSE RETAINER
37	SPRING
38	BALL BEARING
39	PINION GEAR
40	SCREW
41	HANDLE CAP SCREW
42	HANDLE SCREW WASHER
43	BODY
44	ANTI-REVERSE PAWL SCREW
45	ANTI-REVERSE PAWL
46	SPRING
47	ANTI-REVERSE CAM
48	ANTI-REVERSE LEVER
49	BALL BEARING
50	DRIVE GEAR
51	ADJUST WASHER
52	BALL BEARING
53	BODY COVER
54	BODY COVER SCREW
55	BODY REAR COVER
56	BODY REAR COVER SCREW
57	O/S GEAR BUSHING
58	O/S GEAR
59	O/S SLIDER
60	MAIN SHAFT SCREW
61	HANDLE ASSEMBLY (INCLUDING TWO BALL BEARINGS)