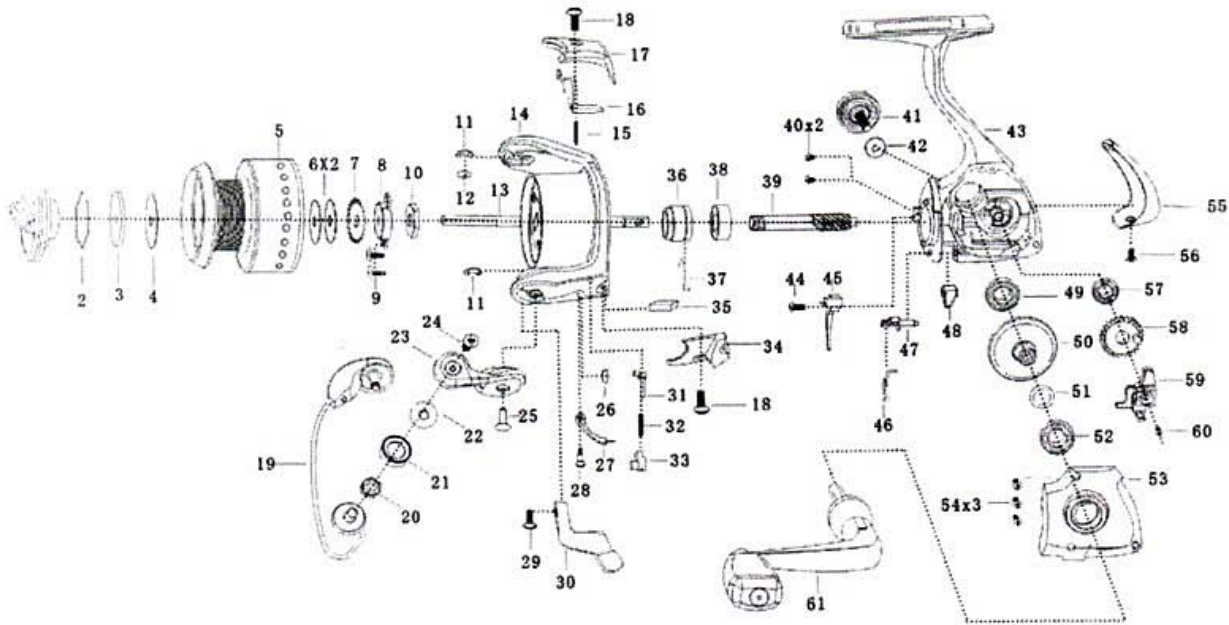


QUANTUM[®]

Snapshot SLS20

For parts and service
call toll free: 1-888-404-1119
www.mikesreelrepair.com



KEY # DESCRIPTION

- 1 DRAG KNOB ASSEMBLY
- 2 DRAG RETAINER
- 3 KEY WASHER
- 4 DRAG WASHER
- 5 SPOOL ASSEMBLY

- 6 SPOOL WASHER
- 7 CLICK GEAR
- 8 NUT FIXING BUSHING
- 9 SCREW
- 10 ROTOR NUT
- 11 E-CLIP
- 12 WASHER
- 13 MAIN SHAFT
- 14 ROTOR
- 15 SPRING
- 16 KICK LEVER
- 17 BAIL SEAT
- 18 SCREW
- 19 BAIL ASSEMBLY
- 20 LINE ROLLER BALL BEARING
- 21 LINE ROLLER
- 22 LINE ROLLER WASHER
- 23 ARM LEVER ASSEMBLY
- 24 LINE SLIDER SCREW
- 25 SCREW
- 26 SPRING
- 27 BAIL ARM FLIP LEVER
- 28 SCREW
- 29 SCREW
- 30 ANTI-REVERSE PLATE

KEY # DESCRIPTION

- 31 BAIL KICK LEVER
- 32 SPRING
- 33 BAIL KICK LEVER SEAT
- 34 ARM LEVER COVER
- 35 BALANCE WEIGHT
- 36 BUSHING
- 37 SPRING
- 38 BALL BEARING
- 39 PINION GEAR
- 40 SCREW
- 41 HANDLE CAP SCREW
- 42 HANDLE SCREW WASHER
- 43 BODY
- 44 ANTI-REVERSE PAWL SCREW
- 45 ANTI-REVERSE PAWL
- 46 SPRING
- 47 ANTI-REVERSE CAM
- 48 ANTI-REVERSE LEVER
- 49 BALL BEARING
- 50 DRIVE GEAR
- 51 ADJUST WASHER
- 52 BALL BEARING
- 53 BODY COVER
- 54 BODY COVER SCREW
- 55 BODY REAR COVER
- 56 BODY REAR COVER SCREW
- 57 O/S GEAR BUSHING
- 58 O/S GEAR
- 59 O/S SLIDER
- 60 MAIN SHAFT SCREW
- 61 HANDLE ASSEMBLY (INCLUDING TWO BALL BEARING S)