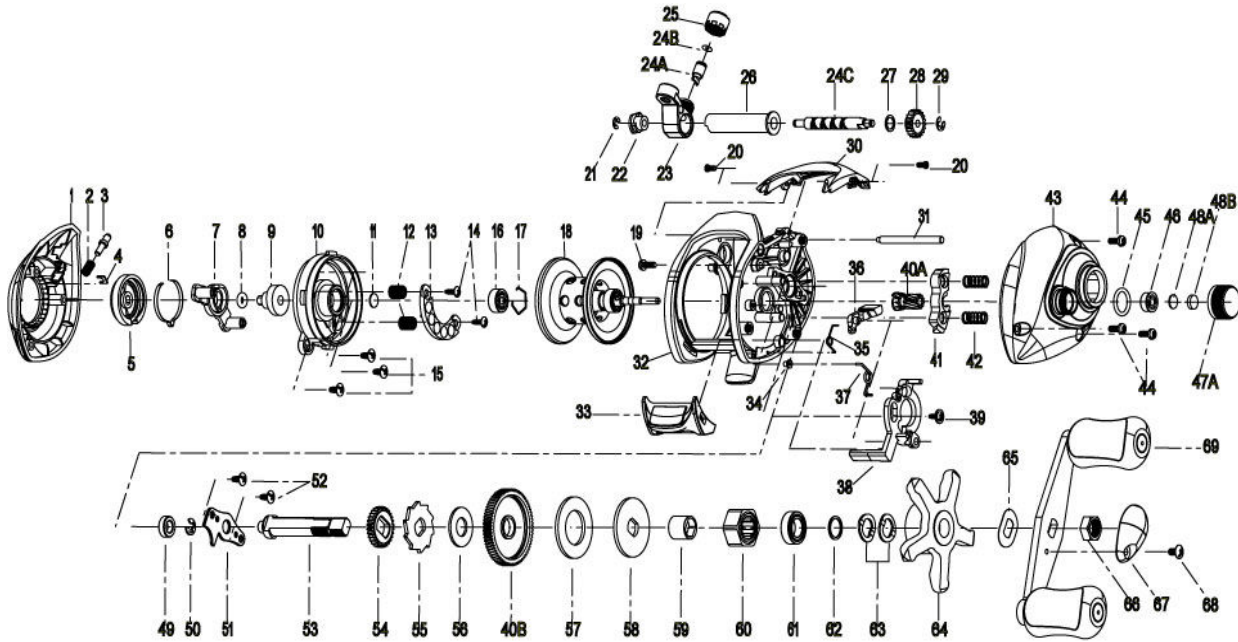


QUANTUM

Response

RE460CX

For Parts and Service
 Call 1-888-404-1119
 www.mikesreelrepair.com



Quantum Response RE460CX Baitcast Reel Part List					
Key #	Description	Part No.	Key #	Description	Part No.
1	Palm Side Cover Assembly	HW323-01	37	Release Slider Spring	KW104-01
2	Locking Lever Spring	MW096-01	38	Release Slider	NW039-01
3	Palm Side Locking Lever	MW119-01	39	Release Slider Screw	KW125-01
4	Locking Pin Retainer	MW159-01	40	Gear Kit	NW4011-01
5	Cast Control Dial	HW026-01	40A	Pinion Gear	N/A
6	Control Dial Clicker Spring	MW108-01	40B	Drive Gear	N/A
7	Slide Cam "A"	HW028-01	41	Pinion Yolk	HW025-01
8	Control Dial Friction Ring	NX105-01	42	Pinion Yolk Spring	KW040-01
9	Slide Cam "B"	KW028-01	43	Gear Side Cover Assembly	HW324-01
10	Spool Cover	HW051-01	44	Gear Side Cover Screw "B"	BV123-01
11	Spool Shaft Washer (Palm Side)	QW032-04	45	Spool Tension Knob O-Ring	QW101-01
12	Magnet Plate Spring	MW071-01	46	Spool Tension Knob Bearing	SW117-01
13	Magnet Plate Assembly	MW330-01	47	Spool Tension Knob Kit	HW4033-01
14	Magnet Plate Screw	QW076-01	47A	Spool Tension Knob	N/A
15	Spool Cover Screw	ZW125-01	48	Spool Tension Washer Kit	HW4032-01
16	Spool Shaft Ball Bearing (Palm Side)	QV017-01	48	Spool Tension Washer Kit	HW4032-01
17	Bearing Retainer Ring	HV080-01	48A	Spool Tension Washer	N/A
18	Spool Assembly	NW321-02	48B	Spool Cushion Washer	N/A
19	Gear Side Cover Screw "A"	BV123-01	49	Crank Shaft Bushing (Frame Side)	ZW017-02
20	Front Support Screw	MW107-01	50	Crank Shaft E-Clip	QW120-01
21	Worm Shaft E-Clip (Palm Side)	NX090-01	51	Crank Shaft Retainer Plate	KW002-01
22	Worm Shaft Bushing	KW067-01	52	Crank Shaft Retainer Plate Screw	QW125-02
23	Line Guide Carrier Assembly	HW347-01	53	Crank Shaft	NW008-01
24	Worm Shaft Kit	HW4072-01	54	Worm Shaft Drive Gear	ZW112-01
24A	Line Guide Pawl	N/A	55	Trip Ratchet	NW083-01
24B	Line Guide Pawl Washer	N/A	56	Trip Ratchet Washer	KW111-01
24C	Worm Shaft	N/A	57	Drag Washer	UX059-01
25	Line Guide Pawl Screw	HW007-01	58	Drag Key Washer	KW045-01
26	Worm Shaft Guide	HW016-01	59	One Way Clutch Sleeve	NW052-01
27	Worm Shaft Washer (Gear Side)	KW035-01	60	One Way Clutch Assembly	EX063-01
28	Worm Shaft Pinion Gear	HV085-01	61	Crank Shaft Bearing (Handle Side)	TW058-02
29	Worm Shaft E-Clip (Gear Side)	NX090-01	62	Star Drag Washer	ZW032-01
30	Front Support	HW099-01	63	Star Drag Spring Washer	JX046-01
31	Pillar	KW061-01	64	Star Drag Assembly	HW355-01
32	Frame	N/A	65	Handle Spring Washer	QW054-01
33	Thumb Bar Assembly	HW309-01	66	Handle Nut	NW003-01
34	Release Slider Spring Bushing	MW103-01	67	Handle Nut Retainer	KV034-01
35	Kick Lever Spring	NW097-01	68	Handle Nut Retainer Screw	QW123-01
36	Kick Lever	HW077-01	69	Handle Assembly	HW318-01