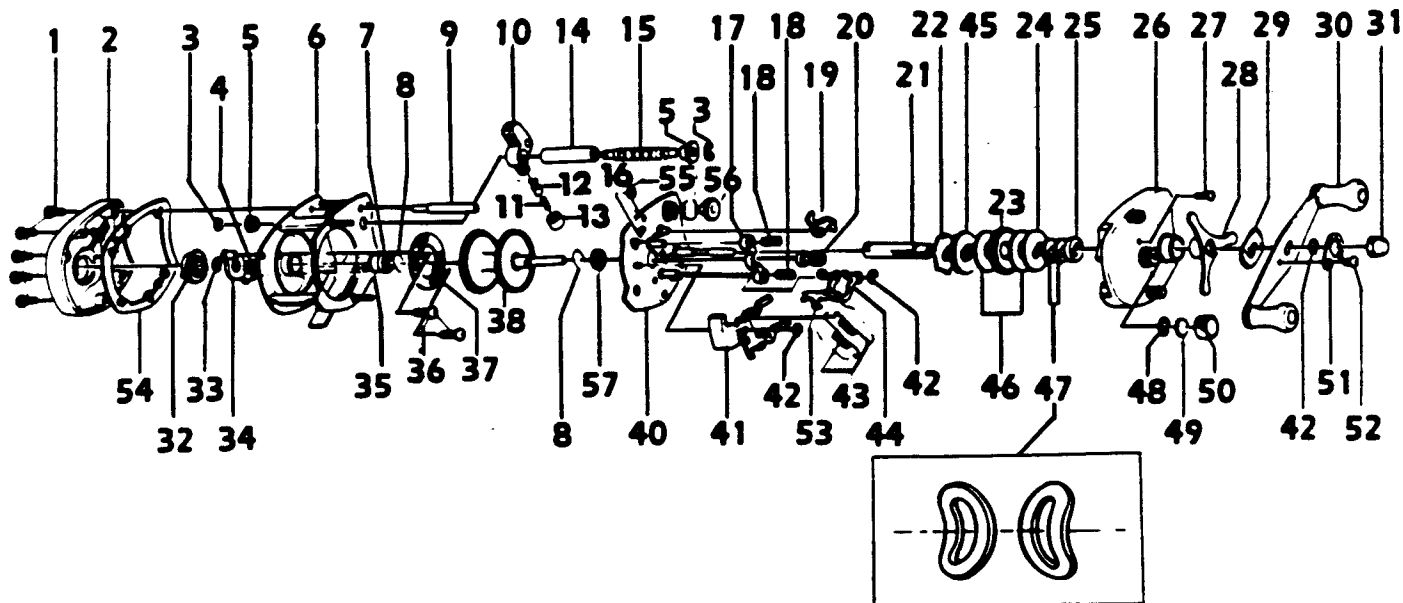


QUANTUM QD1310

DISCONTINUED



Key No.	Part No.	Description	Price	Key No.	Part No.	Description	Price
	CX4000	SPARE PARTS W/WRENCH	3.69	29	CX4660	HANDLE WASHER	.36
1	CX4102	LEFT SIDE PLATE SCREW	.36	30	CX4701	HANDLE	5.53
2	CX4101	LEFT SIDE PLATE	5.21	31	CX4702	HANDLE NUT	.91
3	CX4152	WORM SHAFT RETAINER	.31	32	CX4303	MAGNETIC CONTROL DIAL	.99
4	CX4301	MAGNET RET. SPRING	.36	33	CX4250	O RING	.49
5	CX4156	WORM GUARD BUSHING	.62	34	CX4261	MAGNET RET. SUPPORT	1.46
6	CX4051	FRAME	20.88	35	CX4255	SPOOL TENSION SHIM A	.36
7	CX4252	SPOOL SHFT BEARING	7.99	36	CX4602	MAGNET RETAINER SCREW	.62
8	CX4253	BEARING RETAINER	.36	37	CX4257	MAGNET RETAINER	8.59
9	CX4159	FRAME POST BLACK	1.53	38	CX4251	SPOOL ASSY	13.35
10	CX4201	LINE GUIDE	4.00	39	CX4260	U SPOOL CONVERTER	3.07
11	CX4203	LINE GUIDE PAWL SPRING	.36	40	CX4351	SET PLATE ASSY	16.58
12	CX4202	LINE GUIDE PAWL	2.21	41	CX4402	SPOOL RELEASE BUTTON	2.00
13	CX4204	PAWL CAP	.91	42	CX4656	RETAINER CLIP	.36
14	CX4158	WORM SHAFT GUARD-BLK	2.64	43	CX4353	SET PLATE ACT. SPRING	.36
15	CX4151-1	WORM SHAFT W/O GEAR	3.69	44	CX4503	SET PLATE ACTUATOR B	.91
16	CX4502	SPOOL RELEASE SPRING	.36	45	CX4658	BASE DRAG WASHER	.36
17	CX4401	PINION YOKE	.62	46	CX4661	DRAG WASHER A	.36
18	CX4403	PINION YOKE SPRING	.36	47	CX4662	DRIVE SHAFT SPR. WSHR	.36
19	CX4452	ANTI-REV. PAWL	.91	48	CX4258	O RING	.36
20	NX4256	PINION GEAR	9.21	49	CX4302	SPOOL TENSION SHIM B	.36
21	CX4652	DRIVE SHAFT	3.69	50	CX4259	SPOOL TENSION KNOB	1.84
22	CX4451	ANTI-REV. RATCHET	2.64	51	CX4703	HANDLE NUT LOCK	.62
23	NX4651	DRIVE GEAR	6.14	52	CX4704	HANDLE NUT LOCK SCREW	.36
24	CX4659	DRAG WASHER B	.62	53	CX4501	SET PLATE ACT. A	.36
25	CX4254	DRIVE SHFT BUSH	.62	54	CX4107	LEFT PLATE SPACER-WH.	1.53
26	CX4103	RT. SIDE PLATE	11.47	55	CX4153	GEAR RETAINING CLIP	.31
27	CX4352	RIGHT SIDE COVER SCREW	.36	56	NX4150	WORM SHAFT GEAR	4.31
28	CX4663	STAR DRAG	4.90				

Prices subject to change without notice. Prices do not include postage and handling. Some parts may not be available.

PLEASE ORDER BY PART NUMBER

Rev. 5/93

Zebco Division Brunswick Corporation, Box 270, Tulsa, OK 74101 USA 918-836-5581



BRUNSWICK