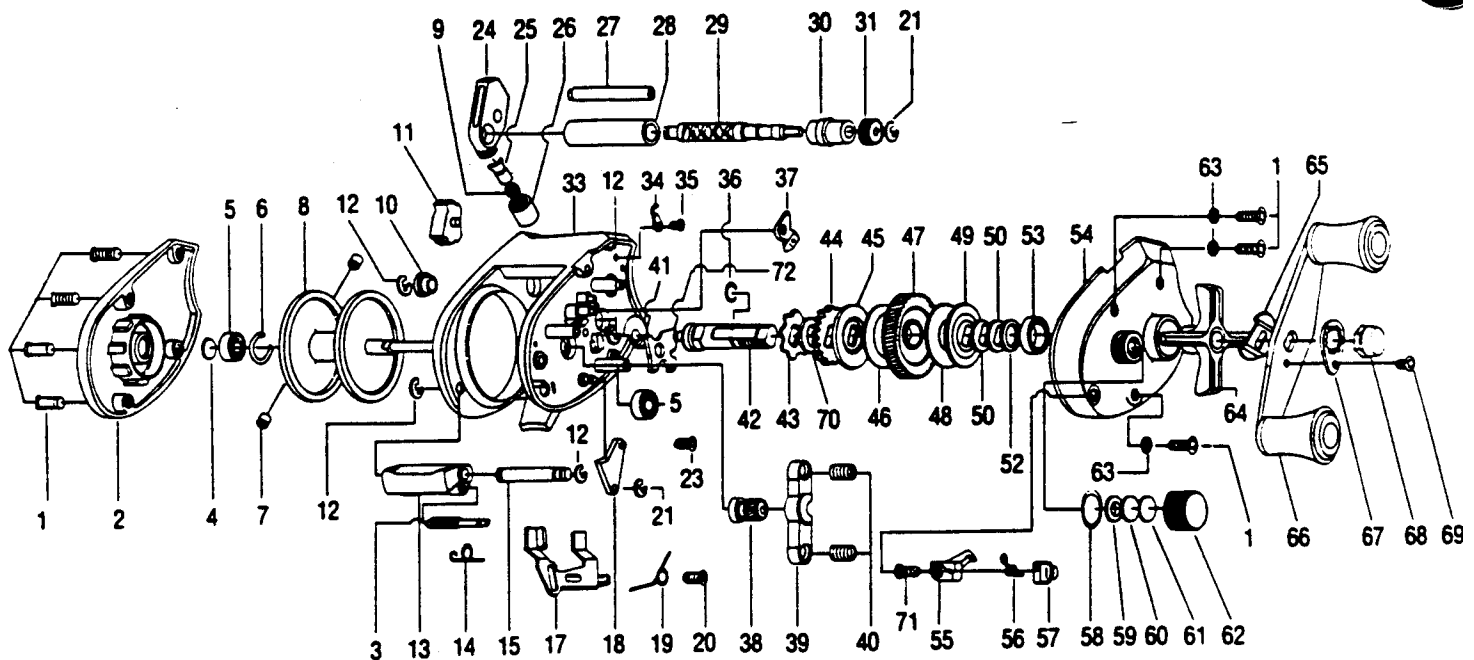


QUANTUM[®] PROLITE



Key No.	Part No.	Description	Price	Key No.	Part No.	Description	Price
1	VX4352	RIGHT SIDE COVER SCREW	.62	37	GW363	A/R PAWL ASSY.	2.51
2	GW323	LEFT SIDE COVER	8.40	38	GW311	PINION GEAR ASSY.	5.62
3	GW036	THUMB BAR PIN	3.16	39	GW025	PINION YOKE	2.25
4	VX4255	SPOOL TENSION SHIM	.99	40	GW040	YOKE SPRING	.70
5	VX4252	BALL BEARING (SPOOL SH)	12.23	41	GW056	CRANK SHAFT BUSHING	3.53
6	VX4253	CLIP RING	.91	42	GW008	CRANK SHAFT	8.03
7	GW044-1	CENTRIFUGAL BRAKESHOE-TAN	.97	43	GW083	TRIP RATCHET	2.25
7	GW044-2	CENTRIFUGAL BRAKESHOE-RED	.97	44	GW091	A/R RATCHET	1.93
8	GW321	SPOOL ASSY.	14.42	45	GW045	LOWER DRAG WASHER	1.24
9	CX4203	LINE GUIDE PAWL SPRING	.36	46	GW060	LOWER DRAG DISC	2.78
10	VX4156	WORM SHAFT BUSHING	1.16	47	GW012	DRIVE GEAR	6.26
11	GW069	ANTI-REVERSE SWITCH	1.12	48	GW059	UPPER DRAG DISC	3.11
12	VX4152	E-CLIP (WORM SHAFT)	.91	49	GW048	UPPER DRAG WASHER	1.61
13	GW009	THUMB BAR	1.93	50	VX4662	SPRING D WASHER	1.36
14	GW022	THUMB BAR SPRING	1.17	52	GW035	BEARING WASHER	1.66
15	GW050	THUMB BAR SHAFT	3.11	53	GW058	CENTER SHAFT BEARING	10.98
17	GW039	RELEASE SLIDER	3.11	54	GW024	RIGHT SIDE COVER	10.71
18	GW084	TRIP CAM	2.73	55	GW037	FLIPPIN' ARM	1.17
19	GW102	TRIP SPRING	.97	56	GW089	SPRING-FLIPPIN' LEVER	1.17
20	GW057	SCREW-SLIDER RETAINER	.70	57	GW087	FLIPPIN' LEVER	1.77
21	ZX4657	RETAINER CLIP	.69	58	VX4250	DIAL FRICTION RING	.85
23	GW107	CTR. SHAFT RET. SCREW	.70	59	GW099	FELT WASHER	1.17
24	GW347	LINE GUIDE CARRIER	6.16	60	VX4302	SPOOL TENSION KNOB WAS	1.46
25	VX4202	LINE GUIDE PAWL	4.31	61	VX4601	SPOOL TENSION KNOB CUS	.99
26	VX4204	LINE GUIDE CARRIER SCREW	2.77	62	VX4259	SPOOL TENSION KNOB	4.85
27	GW061	STABILIZER BAR	2.78	63	CW069	MYLAR WASHER	.70
28	GW016	LEVEL WIND GUARD	3.27	64	GW055	DRAG STAR	6.70
29	GW072	WORM SHAFT	6.91	65	VX4660	HANDLE WASHER	1.16
30	NX068	WORM SHAFT BUSHING-RIGHT	1.16	66	GW318	HANDLE ASSY.	8.79
31	GW085	LEVEL WIND GEAR	1.56	67	GX4703	HANDLE NUT LOCK	.91
33	GW301	FRAME ASSY.	25.71	68	GX4702	HANDLE NUT	.99
34	GW071	A/R SELECTOR SPRING	2.19	69	VX4704	HANDLE NUT LOCK SCREW	.99
35	GW093	SCREW-A/R SELECTOR SPRG.	.70	70	NX111	RATCHET WASHER	1.00
36	GW090	GEAR STACK RETAINER	.70	71	WX4510	FLIPP'N LEVER SCREW	1.23

Prices subject to change without notice. Prices do not include postage and handling.

PLEASE ORDER BY PART NUMBER

Rev. 5/93

Zebco Division Brunswick Corporation, Box 270, Tulsa, OK 74101 USA 918-836-5581

