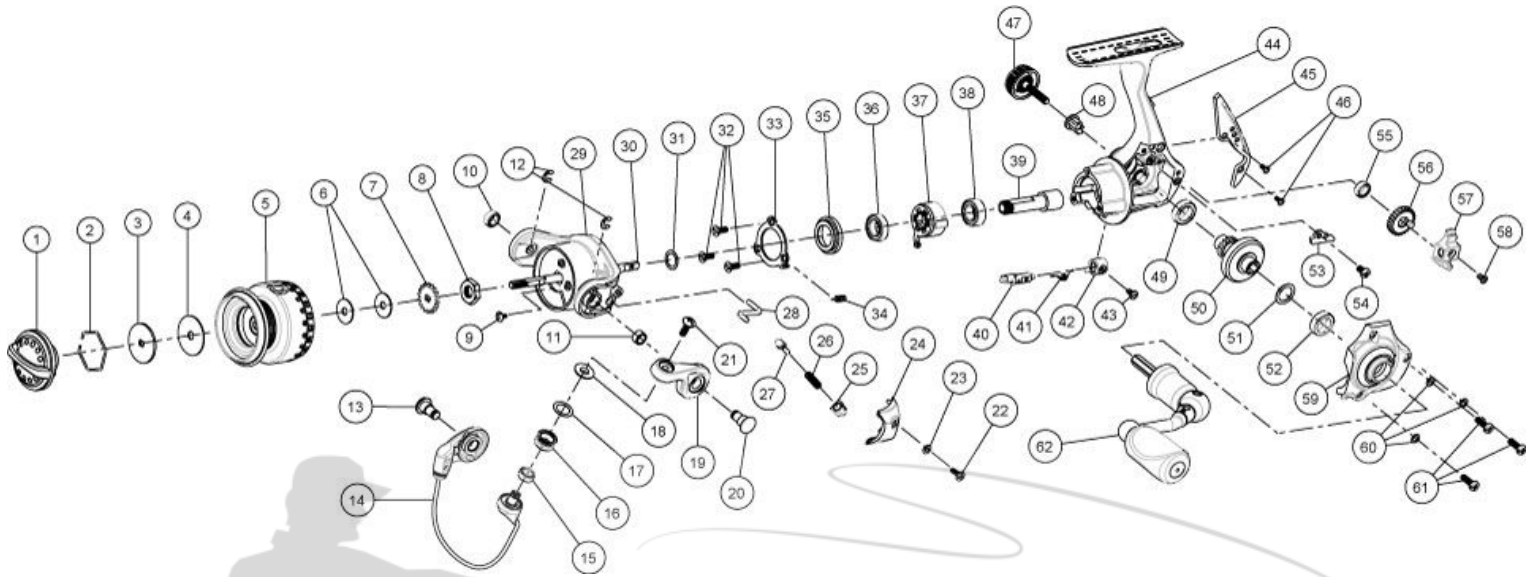


# QUANTUM<sup>®</sup>

## Kinetic Pti

### KT05PTiB



Quantum Energy KT05PTiB Spinning Reel Part List

| Key # | Description                        | Part No. | Key # | Description                  | Part No. |
|-------|------------------------------------|----------|-------|------------------------------|----------|
| 1     | Drag Knob Assembly                 | LG332-02 | 32    | Retainer Screw               | LG111-01 |
| 2     | Retainer Ring                      | LG038-01 | 33    | Retainer                     | LG060-01 |
| 3     | Drag Washer "D"                    | LG080-01 | 34    | Clutch Cam Spring            | LG216-01 |
| 4     | Drag Washer "B"                    | LG033-01 | 35    | Ball Bearing Holder          | LG190-01 |
| 5     | Spool Assembly                     | LG321-02 | 36    | Clutch Retainer Ball Bearing | LG202-01 |
| 6     | Spool Adjust Washer                | LG030-01 | 37    | Clutch Unit                  | LG463-01 |
| 7     | Spool Click Gear                   | LG037-01 | 38    | Pinion Ball Bearing          | LG028-01 |
| 8     | Rotor Nut                          | LG006-01 | 39    | Pinion                       | LG011-01 |
| 9     | Rotor Nut Lock Screw               | RQ094-02 | 40    | Stopper Cam                  | LG090-01 |
| 10    | Rotor Ball Bearing / Bushing       | PG158-01 | 41    | Stopper Cam Spring           | LG089-01 |
| 11    | Arm Lever Bushing                  | LG158-01 | 42    | Stopper Lever                | LG059-01 |
| 12    | E-Clip                             | NX092-01 | 43    | Stopper Cam Screw            | LG135-01 |
| 13    | Pin                                | EP042-02 | 44    | Body Assembly                | N/A      |
| 14    | Bail Assembly                      | LG347-02 | 45    | Rear Cap                     | LG250-01 |
| 15    | Line Roller Ball Bearing / Bushing | PG158-01 | 46    | Rear Cap Screw               | PG107-01 |
| 16    | Line Roller                        | LG004-01 | 47    | Handle Screw Assembly        | LG354-02 |
| 17    | Line Roller Washer                 | LG109-01 | 48    | Handle Collar                | LG058-01 |
| 18    | Line Roller Collar                 | LG102-01 | 49    | Body Ball Bearing            | CH027-01 |
| 19    | Arm Lever                          | LG007-02 | 50    | Drive Gear                   | LG012-01 |
| 20    | Pin                                | LG042-02 | 51    | Drive Gear Adjust Washer     | PG105-02 |
| 21    | Line Roller Screw                  | AQ108-01 | 52    | Side Cover Ball Bearing      | CH027-01 |
| 22    | Arm Lever Cover Screw              | LG168-02 | 53    | O/S Slider Retainer          | LG078-01 |
| 23    | Arm Lever Cover Washer             | LG167-01 | 54    | O/S Slider Retainer Screw    | TK057-01 |
| 24    | Arm Lever Cover                    | LG087-01 | 55    | O/S Gear Ball Bearing        | EH158-01 |
| 25    | Trip Pivot                         | LG113-01 | 56    | O/S Gear                     | LG053-01 |
| 26    | Bail Spring                        | LG096-01 | 57    | O/S Slider                   | LG025-01 |
| 27    | Bail Spring Shaft                  | LG031-01 | 58    | Main Shaft Screw             | LG100-01 |
| 28    | Kick Lever                         | LG019-01 | 59    | Side Cover Assembly          | LG323-02 |
| 29    | Rotor                              | N/A      | 60    | Side Cover Screw Washer      | RQ142-01 |
| 30    | Main Shaft                         | LG015-01 | 61    | Side Cover Screw             | RQ057-01 |
| 31    | Rotor Adjust Washer                | PG105-04 | 62    | Handle Assembly              | LG318-02 |