



IR420CX / IR430CX Iron Bigwater

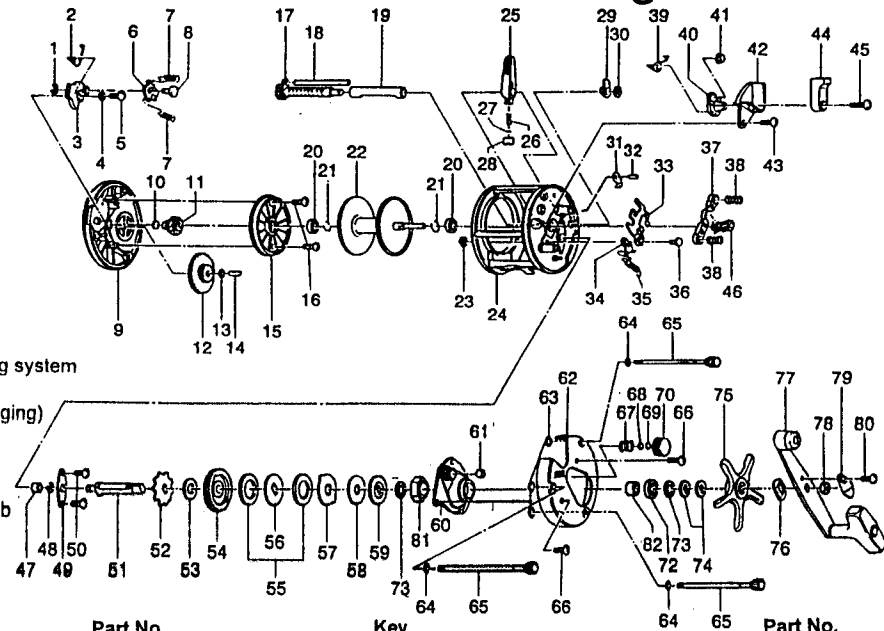
SPECIFICATIONS:

IR420: Hvy FW / Med Lt. SW
 IR430: X Hvy FW / Med. SW
 Line Cap.: 300 yds / 20 lb (IR420)
 400 yds / 20 lb (IR430)

6.1:1 Gear Ratio
 17.6 oz. (IR420) / 17.9 oz. (IR430)
 Lever Clutch Spool Release
 Continuous Anti-Reverse
 3 Ball Bearings; 1 Roller Bearing
 Inches Per Handle Turn (IPT) = 32.5

FEATURES:

Machined, 1-Piece Aluminum Frame
 Oversized, Multi-Disc (6 washer) drag system
 Audible On/Off Bait Clicker
 Synchronized Levelwind (non-disengaging)
 Anodized-Ceramic coated frame
 Brass Magnum Gears
 Stainless Steel Bearings
 Counterbalanced T-style Handle Knob
 Aluminum Side Plates
 Machine Forged Aluminum Spool
 COLOR: Beige



Key No.	Description	Part No.	IR420CX	IR430CX	Price	Key No.	Description	Part No.	IR420CX	IR430CX	Price
1	Click Pawl Post E-Clip	NX092-01	⇔		0.30	42	Release Lever Cover	KV143-01	⇔		1.00
2	Bait Click Lever Spring	KV022-01	⇔		0.30	43	Release Slider Screw	XX050-01	⇔		0.15
3	Bait Click Lever	KV109-01	⇔		0.75	44	Release Lever	KV142-01	⇔		1.95
4	Bait Click Lever Washer	KV038-01	⇔		0.30	45	Release Lever Screw	KV053-01	⇔		0.90
5	Bait Click Lever Screw	AV125-01	⇔		0.70	46	Pinion Gear	LV011-01	⇔		6.40
6	Bait Click Pawl	KV114-01	⇔		0.80	47	Crank Shaft Bearing (L)	XX017-01	⇔		5.36
7	Bait Click Spring	KV110-01	⇔		0.25	48	Crank Shaft Retainer E-Clip	QW120-01	⇔		0.26
8	Bait Click Pawl Post	KV098-01	⇔		0.45	49	Crank Shaft Retainer	JX002-01	⇔		0.57
9	Left Side Cover Assy	KV323-02	⇔		15.00	50	Crank Shaft Retainer Screw	JX107-01	⇔		0.15
10	Spool Shaft Washer	XX038-02	⇔		0.26	51	Crank Shaft	NV008-01	⇔		0.30
11	Oscillate Drive Gear	KV112-01	⇔		0.75	52	Ratchet	KV083-01	⇔		0.95
12	Oscillate Idle Gear	KV127-01	⇔		1.25	53	Ratchet Washer	QW111-01	⇔		0.26
13	Oscillate Idle Gear Washer	KV121-01	⇔		0.25	54	Drive Gear	LV012-01	⇔		8.70
14	Oscillate Idle Gear Post	JX098-01	⇔		0.41	55	Drag Disc ~A~	AV059-01	⇔		1.65
15	Spool Cover	KV051-01	⇔		6.65	56	Drag ~D~ Washer (L)	KV045-01	⇔		0.90
16	Spool Cover Screw	AV125-01	⇔		0.70	57	Drag Key Washer	KV048-01	⇔		0.90
17	Worm Shaft Assy	KV372-01	LV372-01		9.00	58	Drag Disc ~B~	KV059-01	⇔		1.50
18	Line Guide Stabilizer	KV061-01	LV061-01		1.00	59	Drag ~D~ Washer (U)	NV045-01	⇔		2.40
19	Worm Shaft Guide	KV016-01	LV016-01		0.85	60	Crank Shaft Guide	NV066-01	⇔		3.40
20	Spool Shaft Bearing	CW017-01	⇔		7.52	61	Tension Knob Bushing	JX117-01	⇔		0.59
21	Clip Ring	KV080-01	⇔		0.26	62	Right Side Cover	KV024-06	KV024-08		10.50
22	Spool Assy	KV321-01	LV321-01		15.75/16.75	63	Thumb Screw O-Ring	JX073-01	⇔		0.31
23	Kick Lever Guide Post E-Clip	NX092-01	⇔		0.30	64	Thumb Screw Washer	JX121-01	⇔		0.21
24	Frame Assy	NV301-02	PV301-02		26.20/27.20	65	Thumb Screw Assy	KV374-01	KV374-02		1.50
25	Line Guide Carrier Assy.	KV347-01	⇔		2.35	66	Right Side Cover Screw	QW123-01	⇔		0.15
26	Line Guide Pawl	JX006-03	⇔		2.25	67	Tension Knob Spring	JX105-01	⇔		0.31
27	Line Guide Pawl Washer	JX035-01	⇔		0.26	68	Spool Tension Washer	QW032-02	⇔		0.52
28	Line Guide Carrier Screw	JX007-02	⇔		0.52	69	Cushion Washer	JX082-01	⇔		0.21
29	Worm Shaft Bushing	JX067-01	⇔		0.31	70	Spool Tension Knob	XX033-01	⇔		2.82
30	Worm Shaft E-Clip	QW120-01	⇔		0.26	72	Crank Shaft Bearing	Not used with new 1-way bearing			
31	Anti Reverse Pawl Assy	KV363-01	⇔		2.75	73	Crank Shaft Washer	JX038-01	⇔		0.31
32	Anti Reverse Pawl Post	JX098-01	⇔		0.42	74	Spring "D" Washer	JX046-01	⇔		0.67
33	Release Slider	KV039-01	⇔		1.50	75	Star Drag	KV055-01	⇔		3.50
34	Kick Lever	JX077-01	⇔		0.57	76	Handle Washer	NX054-01	⇔		0.26
35	Kick Lever Spring	JX097-01	⇔		0.15	77	Handle Assy	KV318-02	⇔		9.50
36	Kick Lever Guide Post	JX102-01	⇔		0.88	78	Handle Nut	QW003-01	⇔		0.36
37	Pinion Yoke	JX025-01	⇔		0.25	79	Handle Nut Cap	JX034-02	⇔		0.36
38	Pinion Yoke Spring	JX040-01	⇔		0.21	80	Handle Nut Cap Screw	QW123-01	⇔		0.15
39	Release Slider Cam Spring	KV104-01	⇔		0.25	81	One Way Bearing Assembly	NV363-01	⇔		9.50
40	Release Slider Cam	KV141-01	⇔		1.00	82	One Way Bearing Sleeve	NV052-01	⇔		1.00
41	Release Slider Guide Bushing	JX068-01	⇔		1.08						

☐ = Part modified after D8 (4-'98) to allow bigger 1-way clutch. Previous reels need all these parts if replacing an original part; no original parts.

MODEL	EFFECTIVE DATE OF	DISCONTINUED:
INTRODUCED: 1998	PARTS LIST/DIAGRAM: Sept. '98	N / A

Prices subject to change without notice. Prices do not include postage and handling.

PLEASE ORDER BY PART NUMBER

Zebco, P.O. Box 270, Tulsa, Ok. 74101; 918-831-6965 Phone or 800-FIXREEL (349-7335) FAX

