

# QUANTUM.

## IR320 / IR330 Iron Bigwater

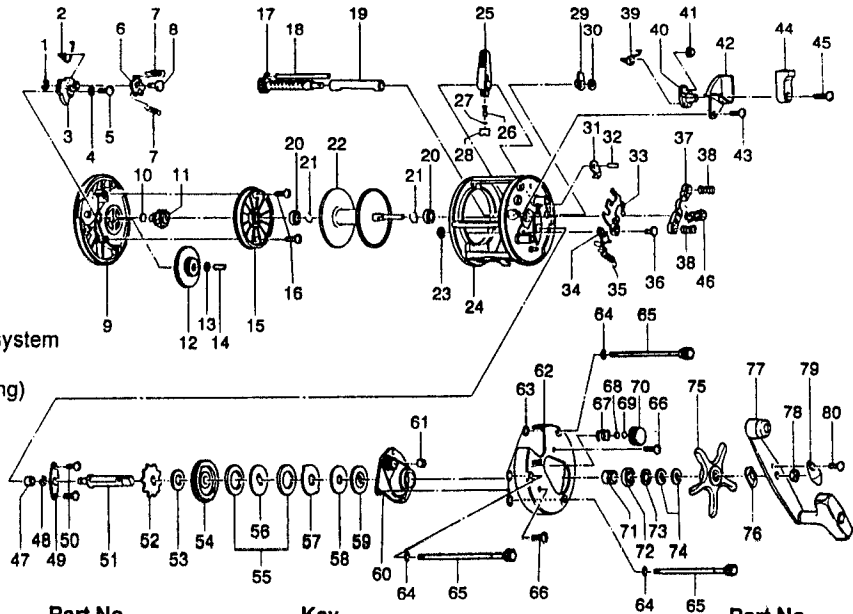
### SPECIFICATIONS:

IR320: Hvy FW / Med Lt. SW  
 IR330: X Hvy FW / Med. SW  
 Line Cap.: 300 yds / 20 lb (IR320)  
 400 yds / 20 lb (IR330)

5.2:1 Gear Ratio  
 17.5 oz. (IR320) / 17.8 oz. (IR330)  
 Lever Clutch Spool Release  
 3 Ball Bearings  
 Inches Per Handle Turn (IPT) = 27.2

### FEATURES:

Machined, 1-Piece Aluminum Frame  
 Oversized, Multi-Disc (6 washer) drag system  
 Audible On/Off Bait Clicker  
 Synchronized Levelwind (non-disengaging)  
 Anodized-Ceramic coated frame  
 Brass Magnum Gears  
 Stainless Steel Bearings  
 Counterbalanced T-style Handle Knob  
 Aluminum Side Plates  
 Machine Forged Aluminum Spool  
 COLOR: Beige



Key No.	Description	Part No.	IR320	IR330	Price	Key No.	Description	Part No.	IR320	IR330	Price
1	Click Pawl Post E-Clip	NX092-01		↔	0.30	40	Release Slider Cam	KV141-01		↔	1.00
2	Bait Click Lever Spring	KV022-01		↔	0.30	41	Release Slider Guide Bushing	JX068-01		↔	1.08
3	Bait Click Lever	KV109-01		↔	0.75	42	Release Lever Cover	KV143-01		↔	1.00
4	Bait Click Lever Washer	KV038-01		↔	0.30	43	Release Slider Screw	KX050-01		↔	0.15
5	Bait Click Lever Screw	AV125-01		↔	0.70	44	Release Lever	KV142-01		↔	1.95
6	Bait Click Pawl	KV114-01		↔	0.80	45	Release Lever Screw	KV053-01		↔	0.90
7	Bait Click Spring	KV110-01		↔	0.25	46	Pinion Gear	KV011-01		↔	6.40
8	Bait Click Pawl Post	KV098-01		↔	0.45	47	Crank Shaft Bearing (L)	JX017-01		↔	5.36
9	Left Side Cover Assy	KV323-01		↔	15.00	48	Crank Shaft Retainer E-Clip	QW120-01		↔	0.26
10	Spool Shaft Washer	XX038-02		↔	0.26	49	Crank Shaft Retainer	JX002-01		↔	0.57
11	Oscillate Drive Gear	KV112-01		↔	0.75	50	Crank Shaft Retainer Screw	JX107-01		↔	0.15
12	Oscillate Idle Gear	KV127-01		↔	1.25	51	Crank Shaft	KV008-01		↔	0.30
13	Oscillate Idle Gear Washer	KV121-01		↔	0.25	52	Ratchet	KV083-01		↔	0.95
14	Oscillate Idle Gear Post	JX098-01		↔	0.41	53	Ratchet Washer	QW111-01		↔	0.26
15	Spool Cover	KV051-01		↔	6.65	54	Drive Gear	KV012-01		↔	8.70
16	Spool Cover Screw	AV125-01		↔	0.70	55	Drag Disc ~A~	AV059-01		↔	1.65
17	Worm Shaft Assy	KV372-01	LV372-01		9.00	56	Drag ~D~ Washer (L)	KV045-01		↔	0.90
18	Line Guide Stabilizer	KV061-01	LV061-01		1.00	57	Drag Key Washer	KV048-01		↔	0.90
19	Worm Shaft Guide	KV016-01	LV016-01		0.85	58	Drag Disc ~B~	AV059-01		↔	1.50
20	Spool Shaft Bearing	CW017-01		↔	7.52	59	Drag ~D~ Washer (U)	AV045-01		↔	2.40
21	Clip Ring	KV080-01		↔	0.26	60	Crank Shaft Guide	KV066-01		↔	3.40
22	Spool Assy - IR320	KV321-01	N/A		15.75	61	Tension Knob Bushing	KV117-01		↔	0.59
22	Spool Assy - IR330	N/A	LV321-01		16.75	62	Right Side Cover	KV024-01	KV024-03		10.50
23	Kick Lever Guide Post E-Clip	NX092-01		↔	0.30	63	Thumb Screw O-Ring	JX073-01		↔	0.31
24	Frame Assy - IR320	KV301-01	N/A		26.20	64	Thumb Screw Washer	JX121-01		↔	0.21
24	Frame Assy - IR330	N/A	LV301-01		27.20	65	Thumb Screw Assy	KV374-01	KV374-02		1.50
25	Line Guide Carrier Assy.	KV347-01		↔	2.35	66	Right Side Cover Screw	QW123-01		↔	0.15
26	Line Guide Pawl	JX006-02		↔	2.25	67	Tension Knob Spring	JX105-01		↔	0.31
27	Line Guide Pawl Washer	JX035-01		↔	0.26	68	Spool Tension Washer	QW032-02		↔	0.52
28	Line Guide Carrier Screw	JX007-02		↔	0.52	69	Cushion Washer	JX082-01		↔	0.21
29	Worm Shaft Bushing	JX067-01		↔	0.31	70	Spool Tension Knob	XX033-01		↔	2.82
30	Worm Shaft E-Clip	QW120-01		↔	0.26	71	Crank Shaft Spacer	LV052-01		↔	0.70
31	Anti Reverse Pawl Assy	KV363-01		↔	2.75	72	Crank Shaft Bearing	TW058-01		↔	7.43
32	Anti Reverse Pawl Post	JX098-01		↔	0.42	73	Crank Shaft Washer	JX038-01		↔	0.31
33	Release Slider	KV039-01		↔	1.50	74	Spring "D" Washer	JX048-01		↔	0.87
34	Kick Lever	JX077-01		↔	0.57	75	Star Drag	KV055-01		↔	3.50
35	Kick Lever Spring	JX097-01		↔	0.15	76	Handle Washer	NX054-01		↔	0.26
36	Kick Lever Guide Post	JX102-01		↔	0.88	77	Handle Assy	KV318-01		↔	9.50
37	Pinion Yoke	JX025-01		↔	0.25	78	Handle Nut	QW003-01		↔	0.36
38	Pinion Yoke Spring	JX040-01		↔	0.21	79	Handle Nut Cap	JX034-02		↔	0.36
39	Release Slider Cam Spring	KV104-01		↔	0.25	80	Handle Nut Cap Screw	QW123-01		↔	0.15

<b>MODEL</b>	<b>EFFECTIVE DATE OF</b>	<b>DISCONTINUED:</b>
INTRODUCED: 1998	PARTS LIST/DIAGRAM: Sept. '98	N / A

Prices subject to change without notice. Prices do not include postage and handling.

PLEASE ORDER BY PART NUMBER

Zebco, P.O. Box 270, Tulsa, Ok. 74101; 918-831-6965 Phone or 800-FIXREEL (349-7335) FAX

