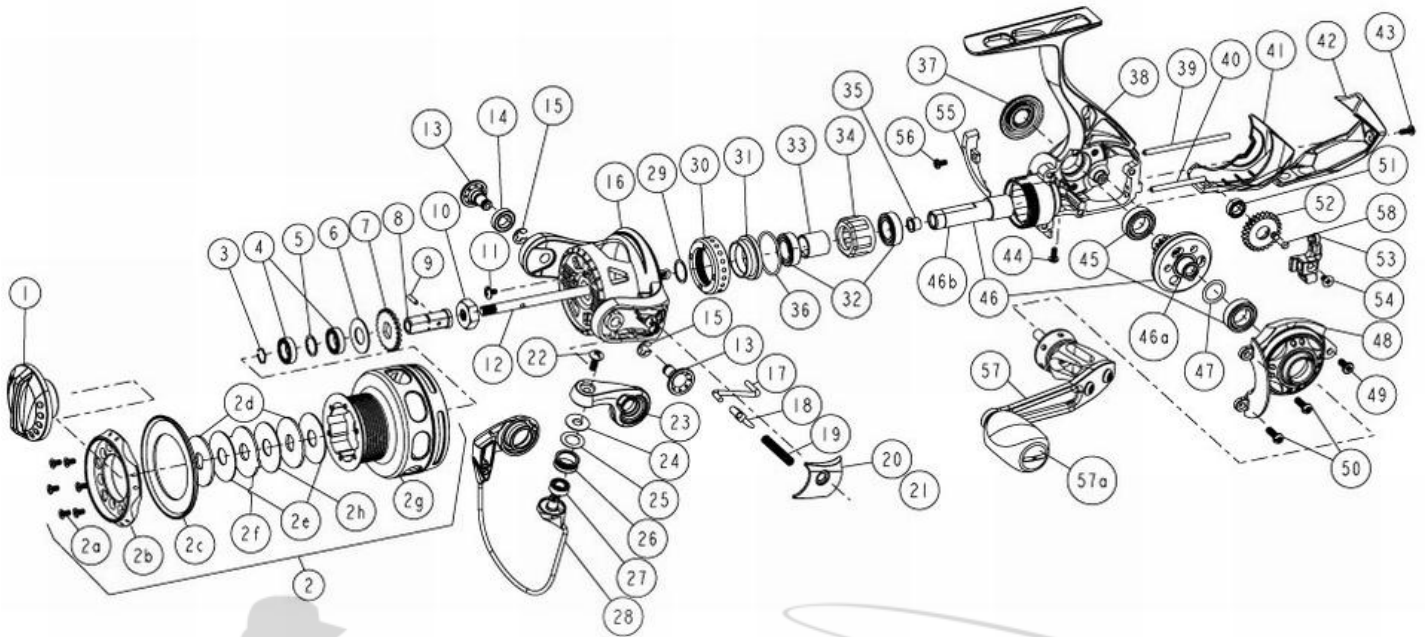


QUANTUM[®]

Exo EX30PTi



Quantum Exo EX30PTi Spinning Reel Part List

Key #	Description	Qty.	Part No.	Key #	Description	Qty.	Part No.
1	Drag Knob Assembly	1	VAA332-02	31	Clutch Bearing Adapter	1	UAA190-01
2	Spool Assembly	1	VAA321-51	32	Pinion Ball Bearing	2	TW058-03
2D	Drag Washer "D"	2	UAA080-01	33	Sleeve	1	UAA139-01
2E	Drag Washer "B"	3	UAA033-01	34	One Way Clutch - SEE ITEM # 60	1	UAA063-01
2F	Drag Washer "A"	1	UAA081-01	35	Pinion Bushing	1	BAA213-02
3	Retainer Ring	1	UAA038-01	36	O-Ring	1	VAA101-01
4	Spool Ball Bearing	2	CH027-01	37	Dust Cap	1	UAA054-01
5	Spool Ball Bearing Washer	1	UAA076-01	38	Body Assembly	1	UAA301-03
6	Spool Adjust Washer	1	UAA030-01	39	O/S Guide Pin "A"	1	UAA093-02
7	Clicker Gear	1	UAA037-01	40	O/S Guide Pin "B"	1	UAA098-02
8	Shaft Drag Adapter	1	UAA117-01	41	Body Rear Cap "A"	1	VAA141-01
9	Adapter Pin	1	UAA134-01	42	Body Rear Cap "B"	1	VAA140-01
10	Rotor Nut	1	BAA006-02	43	Rear Cap Screw "A" - M2 x 6mm	1	UAA123-03
11	Rotor Nut Lock Screw	1	UAA094-02	44	Rear Cap Screw "B" - M2 x 4mm	1	UAA123-04
12	Main Shaft	1	UAA015-02	45	Drive Gear Bearing	2	TW058-03
13	Rotor Arm Sleeve	2	UAA042-02	46	Drive Gear Kit	1	UAA412-01
14	Ball Bearing	1	BAA158-01	46a	Drive Gear	1	N/A
15	E-Clip	2	QW120-01	46b	Pinion Gear	1	N/A
16	Rotor	1	VAA009-02	47	Drive Gear Adjust Washer	1	BAA105-04
17	Kick Lever	1	VAA019-01	48	Sidcover Assembly	1	UAA323-03
18	Bail Actuator	1	BAA031-01	49	Sidcover Screw "B" - M2.6 x 6mm	1	UAA050-01
19	Bail Spring	1	BAA022-01	50	Sidcover Screw "A" - M2.6 x 8mm	2	UAA057-02
20	Arm Lever Cover	1	VAA087-02	51	O/S Gear Bearing	1	CT157-02
21	Arm Lever Cover Screw	1	CW125-02	52	O/S Gear Assembly	1	UAA353-01
22	Line Roller Screw	1	BAA108-02	53	O/S Slider	1	UAA025-01
23	Arm Lever	1	UAA007-01	54	Main Shaft Screw	1	BAA100-01
24	Line Roller Collar	1	CAA102-01	55	Trip Ramp	1	UAA119-01
25	Line Roller Washer	1	BAA102-01	56	Trip Ramp Screw	1	UAA123-04
26	Line Roller	1	BAA004-02	57	Handle Assembly (Includes 57a)	1	VAA318-02
27	Line Roller Ball Bearing	1	GH202-01	57A	Handle Knob Cap	1	BB115-02
28	Bail Assembly	1	VAA347-01	58	O-Ring	1	UAA101-01
29	Rotor Adjust Washer	1	BAA110-02	59	O-Ring	1	VAA101-01
30	Clutch Bearing Cap	1	UAA040-03	60	Clutch Tool - TO REMOVE C LUTCH CAP	1	UAA3113-01