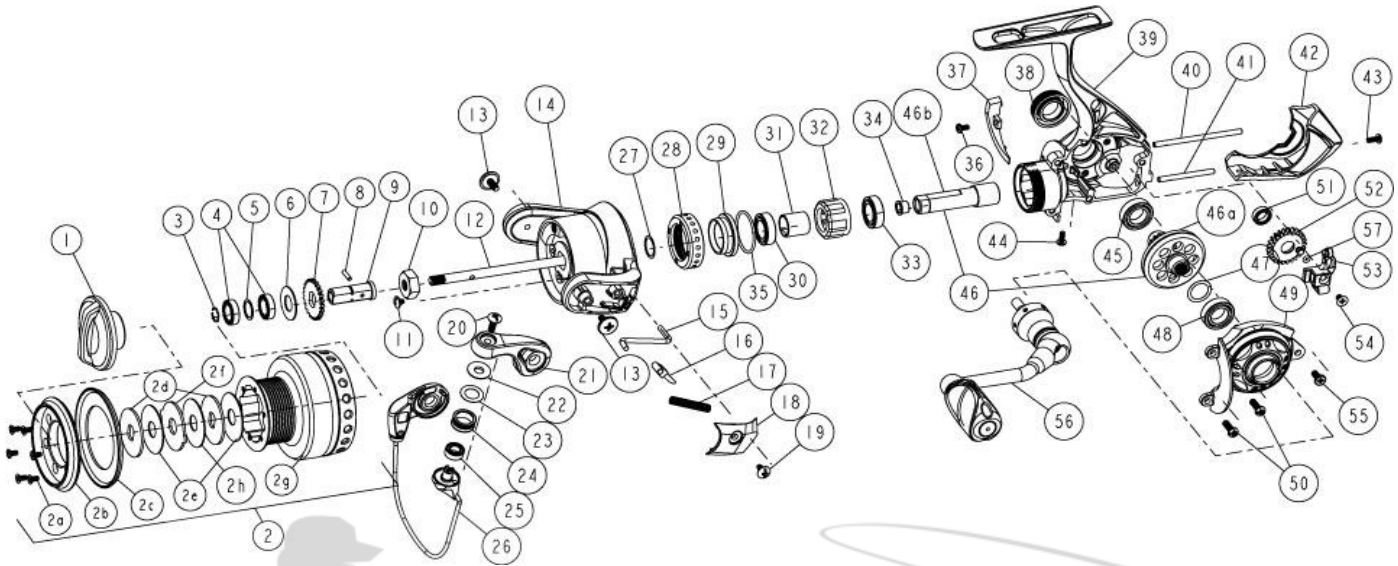


# QUANTUM

## Energy E25PTiC



Quantum E25PTiC Spinning Reel Part List

Key #	Description	Qty	Part No.	Key #	Description	Qty	Part No.
1	Drag Knob Assembly	1	UAA332-01	28	Clutch Bearing Cap	1	UAA040-01
2	Spool Assembly	1	UAA320-01	29	Clutch Bearing Adapter	1	UAA190-01
2a	Spool Cap Screws	6	CF107-01	30	Top Pinion Ball Bearing	1	TW058-03
2b	Spool Cap	1	UAA144-01	31	Sleeve	1	UAA139-01
2c	Spool Lip	1	UAA143-01	32	One Way Clutch / <b>SEE ITEM #59</b>	1	UAA063-01
2d	Drag Washer "D"	2	UAA080-01	33	Bottom Pinion Ball Bearing	1	TW058-03
2e	Drag Washer "B"	2	UAA033-01	34	Pinion Bushing	1	BAA213-02
2f	Drag Washer "A"	1	UAA081-01	35	O-Ring	1	VAA101-01
2g	Spool	1	N/A	36	Trip Ramp Screw	1	UAA123-02
2h	Drag Washer "C"	1	UAA033-02	37	Trip Ramp	1	UAA119-01
3	Retainer Ring	1	UAA038-01	38	Handle Screw Cap Assembly	1	BAA354-02
4	Spool Ball Bearing	2	CH027-01	39	Body Assembly	1	UAA301-01
5	Spool Ball Bearing Washer	1	UAA076-01	40	O/S Guide Pin "A"	1	UAA093-01
6	Spool Adjust Washer	1	UAA030-01	41	O/S Guide Pin "B"	1	UAA098-01
7	Clicker Gear	1	UAA037-01	42	Body Rear Cap	1	UAA140-01
8	Adapter Pin	1	UAA134-01	43	Rear Cap Screw "A" - M2 x 5mm	1	UAA123-05
9	Shaft Drag Adapter	1	UAA117-01	44	Rear Cap Screw "B" - M2 x 5mm	1	UAA123-05
10	Rotor Nut	1	BAA006-01	45	Body Drive Gear Bearing	1	TW058-03
11	Rotor Nut Lock Screw	1	BAA094-01	46	Drive Gear Kit	1	BAA412-03
12	Main Shaft	1	UAA015-01	46a	Drive Gear	1	N/A
13	Arm Lever Screw	2	BAA042-01	46b	Pinion Gear	1	N/A
14	Rotor	1	BAA009-06	47	Drive Gear Adjust Washer	1	BAA105-04
15	Kick Lever	1	BAA019-01	48	Sidecover Drive Gear Bearing	1	TW058-03
16	Bail Actuator	1	BAA031-01	49	Side Cover Assembly	1	UAA323-01
17	Bail Spring	1	BAA022-01	50	Side Cover Screw "A" - M2.6 x 8mm	2	UAA057-01
18	Arm Lever Cover	1	BAA087-03	51	O/S Gear Bearing	1	CT157-02
19	Arm Lever Cover Screw	1	BAA077-02	52	O/S Gear Assembly	1	UAA353-01
20	Line Roller Screw	1	BAA108-01	53	O/S Slider	1	UAA025-01
21	Arm Lever	1	BAA007-06	54	Main Shaft Screw	1	BAA100-01
22	Line Roller Collar	1	CAA102-01	55	Side Cover Screw "B" - M2.6 x 6mm	1	UAA050-01
23	Line Roller Washer	1	BAA102-01	56	Handle Assembly	1	UAA318-01
24	Line Roller	1	BAA004-01	57	O-Ring	1	UAA101-01
25	Line Roller Ball Bearing	1	GH202-01	58	O-Ring	1	VAA101-01
26	Bail Assembly	1	BAA347-04	59	Clutch Tool - <b>TO REMOVE CLUTCH CAP</b>	1	UAA3113-01
27	Rotor Adjust Washer	1	BAA110-02				