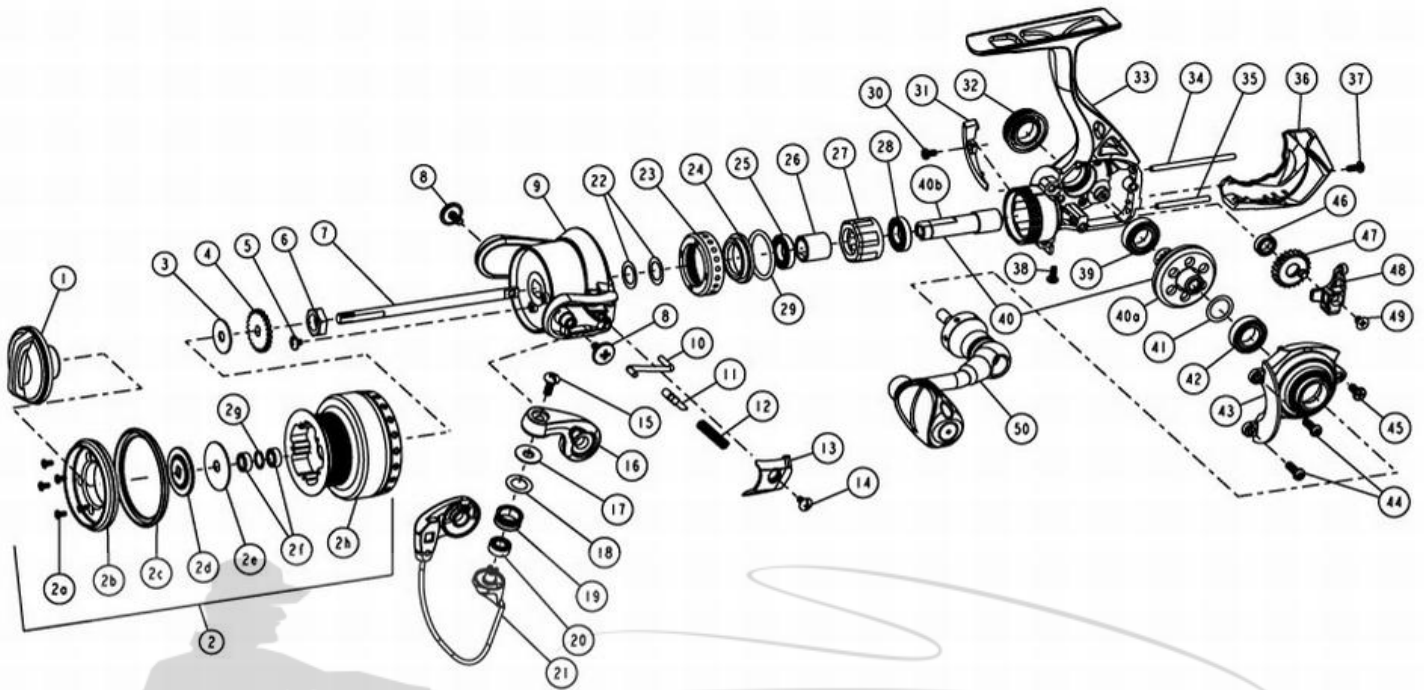


# QUANTUM<sup>®</sup>

## Energy PT

### E10PTiC



Quantum Energy E10PTiC Spinning Reel Part List

Key #	Description	Part No.	Qty.	Key #	Description	Part No.	Qty.
1	Drag Knob Assembly	AAA332-06	1	24	Clutch Bearing Adapter	TAA190-01	1
2	Spool Assembly	TAA320-01	1	25	Top Pinion Ball Bearing	TAA028-01	1
2a	Spool Cap Screw	N/A	5	26	Sleeve	TAA139-01	1
2b	Spool Cap	N/A	1	27	One Way Clutch / <b>SEE ITEM #51</b>	UAA063-01	1
2c	Spool Lip	N/A	1	28	Bottom Pinion Ball Bearing	TAA028-01	1
2d	Drag Washer "D"	N/A	1	29	Pinion Gear	TAA011-01	1
2e	Drag Washer "B"	N/A	1	30	Trip Ramp Screw	UAA123-02	1
2f	Spool Ball Bearing	N/A	2	31	Trip Ramp	TAA119-01	1
2g	Spool Ball Bearing Washer	N/A	1	32	Handle Screw Cap	BAA354-02	1
2h	Spool	N/A	1	33	Body Assembly	TAA301-01	1
3	Spool Adjust Washer	BAA030-01	1	34	O/S Guide Pin "A"	TAA093-01	1
4	Clicker Gear	BAA037-01	1	35	O/S Guide Pin "B"	TAA098-01	1
5	Rotor Nut Lock Screw	BAA094-01	1	36	Body Rear Cap	TAA140-01	1
6	Rotor Nut	AAA006-01	1	37	Rear Cap Screw "A" - M2 x 5mm	UAA123-05	1
7	Main Shaft	TAA015-01	1	38	Rear Cap Screw "B" - M2 x 5mm	UAA123-05	1
8	Arm Lever Screw	BAA042-01	2	39	Body Drive Gear Bearing	TW058-03	1
9	Rotor	AAA009-06	1	40	Drive Gear Kit	AAA412-02	1
10	Kick Lever	AAA019-01	1	40a	Drive Gear	N/A	1
11	Bail Actuator	AAA031-01	1	40b	Pinion Gear	N/A	1
12	Bail Spring	AAA022-01	1	41	Drive Gear Adjust Washer	BAA105-04	1
13	Arm Lever Cover	AAA087-02	1	42	Sidecover Drive Gear Bearing	TW058-03	1
14	Arm Lever Cover Screw	CW125-02	1	43	Side Cover Assembly	TAA323-01	1
15	Line Roller Screw	BAA108-01	1	44	Side Cover Screw "A" - M2.6 x 8mm	UAA057-01	2
16	Arm Lever	BAA007-06	1	45	Side Cover Screw "B" - M2.6 x 6mm	UAA050-01	1
17	Line Roller Collar	CAA102-01	1	46	O/S Gear Bearing	CT157-02	1
18	Line Roller Washer	BAA102-01	1	47	O/S Gear	TAA053-01	1
19	Line Roller	BAA004-01	1	48	O/S Slider	TAA025-01	1
20	Line Roller Ball Bearing	GH202-01	1	49	Main Shaft Screw	BAA100-01	1
21	Bail Assembly	AAA347-02	1	50	Handle Assembly	TAA318-01	1
22	Rotor Adjust Washer	AAA110-01	2	51	Clutch Tool - <b>TO REMOVE CLUTCH CAP</b>	UAA3113-01	1
23	Clutch Bearing Cap	UAA040-01	1				