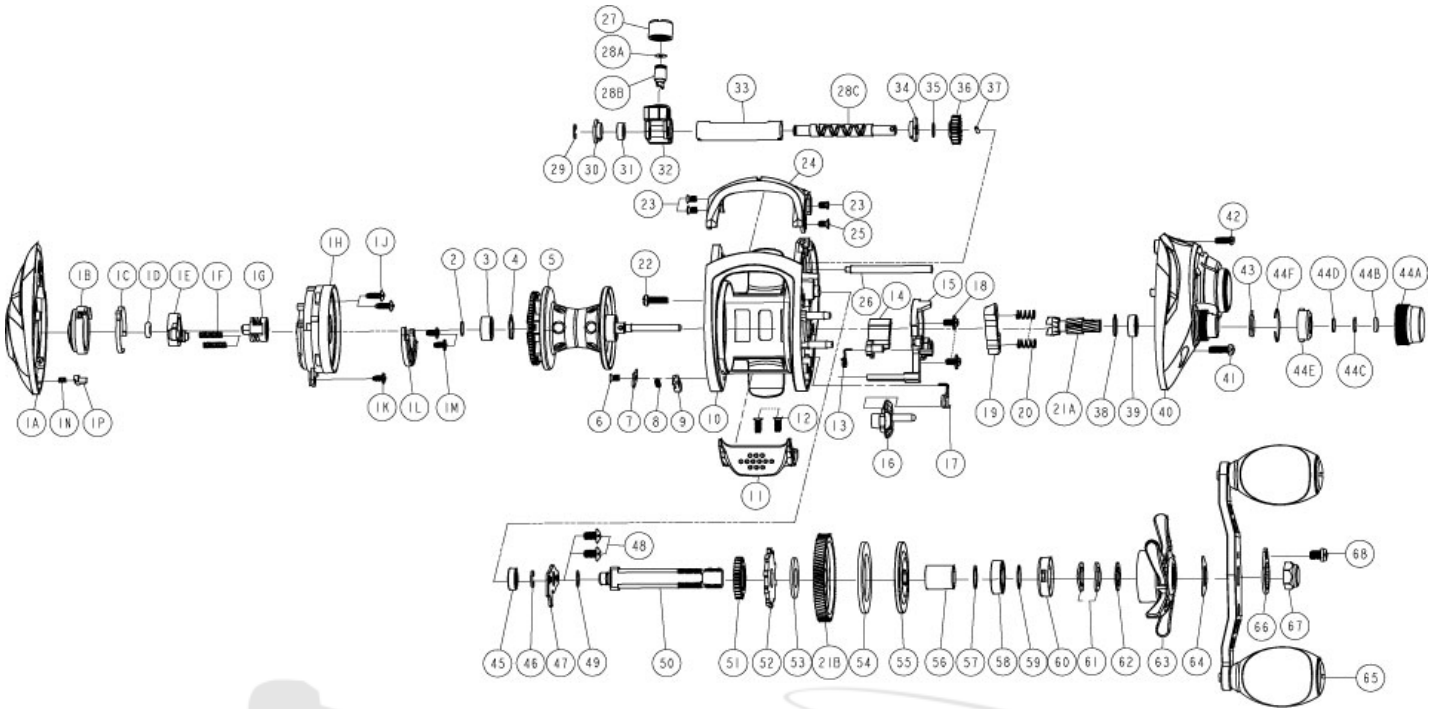


QUANTUM[®]

Energy E100HPTA



Quantum Energy E100HPTA Baitcast Reel Part List

| Key # | Description | Qty. | Part No. | Key # | Description | Qty. | Part No. |
|-------|-------------------------------------|------|-----------|-------|--|------|-----------|
| 1 | Palm Side Cover Kit | 1 | PA4023-01 | 29 | Worm Shaft E-Clip | 1 | NX092-01 |
| 1A | Palm Side Cover Assembly | 1 | N/A | 30 | Worm Shaft Bushing | 1 | PA067-01 |
| 1B | Casting Control Dial | 1 | N/A | 31 | Worm Shaft Ball Bearing | 1 | PA017-01 |
| 1C | Control Dial Clicker Spring | 1 | MW108-01 | 32 | Line Guide Carrier Assembly | 1 | EB347-02 |
| 1D | Control Dial Friction Ring | 1 | NX105-01 | 33 | Worm Shaft Guide | 1 | PA016-01 |
| 1E | Slide Cam "A" | 1 | EB028-01 | 34 | Worm Shaft Bushing | 1 | RA067-01 |
| 1F | Magnet Plate Spring | 2 | EB071-01 | 35 | Worm Shaft Washer(Gear Side) | 1 | PA035-01 |
| 1G | Slide Cam "B" | 1 | NX028-01 | 36 | Worm Shaft Pinion Gear | 1 | PA085-01 |
| 1H | Spool Cover Assembly | 1 | PA351-01 | 37 | Worm Shaft E-Clip | 1 | NX090-01 |
| 1J | Spool Cover Screw "A" | 2 | PA076-01 | 38 | Spool Tension Knob Bearing Retainer | 1 | EB080-01 |
| 1K | Spool Cover Screw "B" | 1 | EB125-01 | 39 | Spool Tension Knob Ball Bearing | 1 | SW017-01 |
| 1L | Magnet Plate Assembly | 1 | EB330-01 | 40 | Gear Side Cover Assembly | 1 | PA324-01 |
| 1M | Screw | 2 | EB125-01 | 41 | Gear Side Cover Screw "A" | 1 | KW123-02 |
| 1N | Side Cover Locking Pin Spring | 1 | KW070-01 | 42 | Gear Side Cover Screw "B" | 1 | PA123-01 |
| 1P | Side Cover Locking Pin | 1 | KW103-01 | 43 | Spool Tension Knob Click Spring | 1 | PA114-01 |
| 2 | Spool Shaft Washer(Palm Side) | 1 | QW032-04 | 44 | Spool Tension Knob Kit | 1 | PA4033-01 |
| 3 | Spool Shaft Ball Bearing(Palm Side) | 1 | QV017-01 | 44A | Spool Tension Knob | 1 | PA033-01 |
| 4 | Bearing Retainer Ring | 1 | HV080-01 | 44B | Spool Cushion Washer | 1 | EX082-01 |
| 5 | Spool Assembly | 1 | EB321-04 | 44C | Spool Tension Knob Washer "B" | 1 | PW032-01 |
| 6 | Locking Lever Retainer Screw | 1 | KW107-01 | 44D | Spool Tension Knob Washer "A" | 1 | QW032-04 |
| 7 | Locking Lever Retainer | 1 | KW056-01 | 44E | Click Ratchet | 1 | PW113-01 |
| 8 | Locking Lever Spring | 1 | KW096-01 | 44F | C-Ring | 1 | PW080-01 |
| 9 | Locking Lever | 1 | KW119-02 | 45 | Crank Shaft Ball Bearing | 1 | SW017-01 |
| 10 | Frame | 1 | PA001-01 | 46 | Crank Shaft E-Clip | 1 | QW120-01 |
| 11 | Thumb Bar | 1 | PA009-01 | 47 | Crank Shaft Retainer Plate | 1 | KW002-01 |
| 12 | Thumb Bar Screw | 2 | EB107-01 | 48 | Crank Shaft Retainer Plate Screw | 2 | QW125-02 |
| 13 | Kick Lever Spring | 1 | EB097-01 | 49 | Adjustment Washer | 1 | EB032-01 |
| 14 | Kick Lever | 1 | EB077-01 | 50 | Crank Shaft | 1 | PA008-01 |
| 15 | Release Slider | 1 | EB039-01 | 51 | Worm Shaft Drive Gear | 1 | ZW112-01 |
| 16 | Flipping Switch | 1 | EB087-02 | 52 | Trip Ratchet | 1 | PA083-01 |
| 17 | Release Slider Spring | 1 | MW104-01 | 53 | Trip Ratchet Washer | 1 | PA111-01 |
| 18 | Release Slider Screw | 2 | EB125-01 | 54 | Drag Washer | 1 | UX059-01 |
| 19 | Pinion Yoke | 1 | EB025-01 | 55 | Drag Key Washer | 1 | PA045-01 |
| 20 | Pinion Yoke Spring | 2 | KW040-01 | 56 | One Way Clutch Sleeve | 1 | PA052-01 |
| 21 | Gear Kit | 1 | PA4011-01 | 57 | Bearing Washer | 1 | KW032-01 |
| 21A | Pinion Gear | 1 | N/A | 58 | Crank Shaft Ball Bearing (Handle Side) | 1 | TW058-02 |
| 21B | Drive Gear | 1 | N/A | 59 | Star Drag Washer "A" | 1 | KW032-01 |
| 22 | Gear Side Cover Screw "A" | 1 | KW123-02 | 60 | Star Drag Clicker Spring Assembly | 1 | PA4114-01 |
| 23 | Front Support Screw "A" | 3 | KW107-01 | 61 | Star Drag Spring Washer | 2 | JX046-01 |
| 24 | Front Support | 1 | PA099-01 | 62 | Star Drag Washer "B" | 1 | PA032-01 |
| 25 | Front Support Screw "B" | 1 | PA107-01 | 63 | Star Drag | 1 | PA055-01 |
| 26 | Pillar | 1 | KW061-01 | 64 | Handle Spring Washer | 1 | QW054-01 |
| 27 | Line Guide Pawl Screw | 1 | KW007-01 | 65 | Handle Assembly | 1 | PA318-01 |
| 28 | Worm Shaft Kit | 1 | PA4072-01 | 66 | Handle Nut | 1 | KW003-03 |
| 28A | Line Guide Pawl Washer | 1 | BV035-01 | 67 | Handle Nut Retainer | 1 | KW034-05 |
| 28B | Line Guide Pawl | 1 | KW006-01 | 68 | Handle Nut Retainer Screw | 1 | QW123-02 |
| 28C | Worm Shaft | 1 | PA072-01 | | | | |