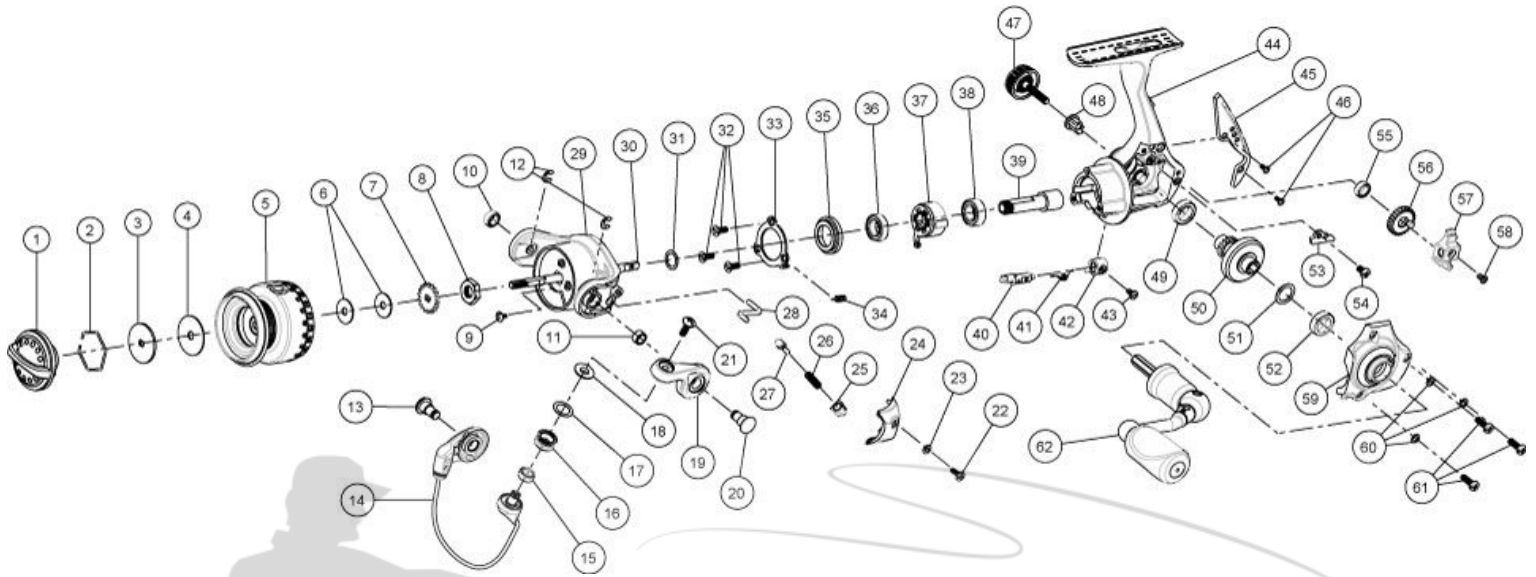


# QUANTUM<sup>®</sup>

## Energy PT

### E05PTiB



**Quantum Energy E05PTiB Spinning Reel Part List**

Key #	Description	Part No.	Key #	Description	Part No.
1	Drag Knob Assembly	LG332-01	32	Retainer Screw	LG111-01
2	Retainer Ring	LG038-01	33	Retainer	LG060-01
3	Drag Washer "D"	LG080-01	34	Clutch Cam Spring	LG216-01
4	Drag Washer "B"	LG033-01	35	Ball Bearing Holder	LG190-01
5	Spool Assembly	LG321-01	36	Clutch Retainer Ball Bearing	LG202-01
6	Spool Adjust Washer	LG030-01	37	Clutch Unit	LG463-01
7	Spool Click Gear	LG037-01	38	Pinion Ball Bearing	LG028-01
8	Rotor Nut	LG006-01	39	Pinion	LG011-01
9	Rotor Nut Lock Screw	RQ094-02	40	Stopper Cam	LG090-01
10	Rotor Ball Bearing / Bushing	EH158-01	41	Stopper Cam Spring	LG089-01
11	Arm Lever Bushing	LG158-01	42	Stopper Lever	LG059-01
12	E-Clip	NX092-01	43	Stopper Cam Screw	LG135-01
13	Pin	EP042-01	44	Body Assembly	N/A
14	Bail Assembly	LG347-01	45	Rear Cap	LG250-01
15	Line Roller Ball Bearing / Bushing	EH158-01	46	Rear Cap Screw	PG107-01
16	Line Roller	LG004-01	47	Handle Screw Assembly	LG354-01
17	Line Roller Washer	LG109-01	48	Handle Collar	LG058-01
18	Line Roller Collar	LG102-01	49	Body Ball Bearing	CH027-01
19	Arm Lever	LG007-01	50	Drive Gear	LG012-01
20	Pin	LG042-01	51	Drive Gear Adjust Washer	PG105-02
21	Line Roller Screw	AQ108-02	52	Side Cover Ball Bearing	CH027-01
22	Arm Lever Cover Screw	LG168-01	53	O/S Slider Retainer	LG078-01
23	Arm Lever Cover Washer	LG167-01	54	O/S Slider Retainer Screw	TK057-01
24	Arm Lever Cover	LG087-01	55	O/S Gear Ball Bearing	EH158-01
25	Trip Pivot	LG113-01	56	O/S Gear	LG053-01
26	Bail Spring	LG096-01	57	O/S Slider	LG025-01
27	Bail Spring Shaft	LG031-01	58	Main Shaft Screw	LG100-01
28	Kick Lever	LG019-01	59	Side Cover Assembly	LG323-01
29	Rotor	N/A	60	Side Cover Screw Washer	RQ142-01
30	Main Shaft	LG015-01	61	Side Cover Screw	RQ057-02
31	Rotor Adjust Washer	PG105-04	62	Handle Assembly	LG318-01