



EX500CX / EX300CP / BT300CX

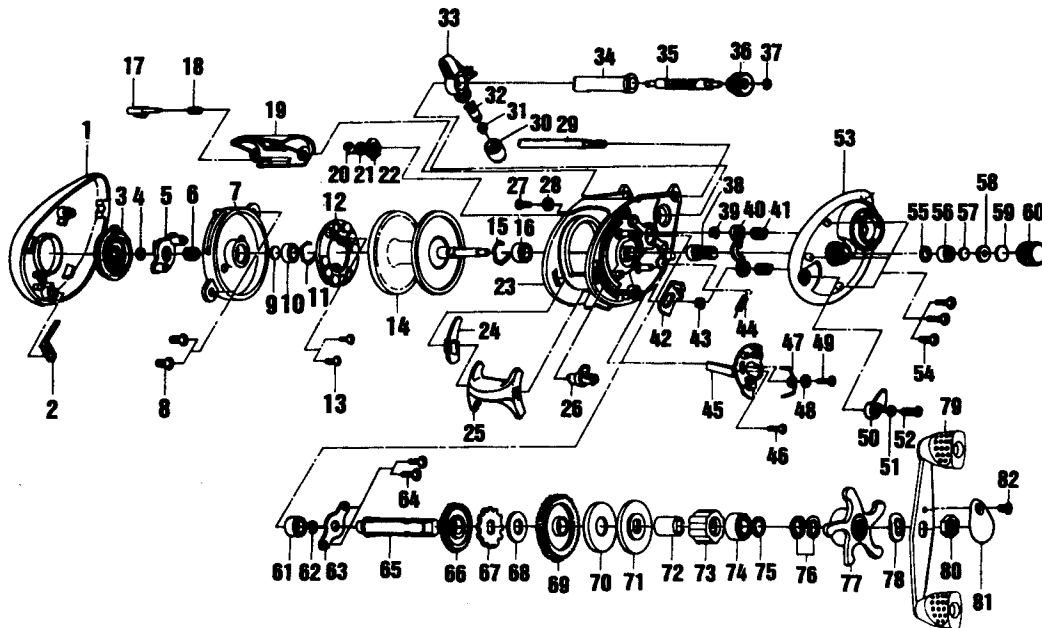
SPECIFICATIONS:

Med. FW
 65 yds / 12 lb Line
 Gear Ratio :
 EX500CX, BT300CX - 6.2:1
 EX200C - 5.1:1
 Line Retrieve (inches per turn) :
 EX500CX, BT300CX - 25"
 EX200C - 20.6"
 Weight - 8.6 oz.
 Bearings :
 EX500CX - 4 BB; 1 RB
 EX300CP, BT300CX - 2 BB; 1 RB

FEATURES:

Thumb Bar Spool Release
 Magnetic Cast Control
 Continuous Anti-Reverse
 Bayonet Sidecover Release
 Graphite Frame
 Color:

EX500CX - Medium Grey
 EX300CP - Hunter Green
 BT300CX - Grey



| Key | | | | | Key | | | | | | |
|-----|-------------------------------|----------|----------|----------|-------|-----|----------------------------|----------|----------|----------|-------|
| No. | Description | EX500CX | EX300CP | BT300CX | Price | No. | Description | EX500CX | EX300CP | BT300CX | Price |
| 1 | Left Side Cover | BV023-02 | BV023-03 | BV023-09 | 8.24 | 42 | Kick Lever | ZW077-01 | ⇨ | ⇨ | 1.60 |
| 2 | Clicker Spring | ZW108-01 | ⇨ | ⇨ | 1.03 | 43 | E-Clip - Kick Lever | QW120-01 | ⇨ | ⇨ | 0.27 |
| 3 | Magnet Dail | BV026-01 | BV026-02 | ⇨ | 1.03 | 44 | Spring - Kick lever | ZW097-01 | ⇨ | ⇨ | 0.67 |
| 4 | Dial Friction Ring | NX105-01 | ⇨ | ⇨ | 0.77 | 45 | Release Slider | ZW039-01 | ⇨ | ⇨ | 3.19 |
| 5 | Slide Cam | BV028-01 | ⇨ | ⇨ | 0.54 | 46 | Screw - Thumb bar | ZW053-01 | ⇨ | ⇨ | 1.03 |
| 6 | Slide Cam Spring | NX071-03 | ⇨ | ⇨ | 2.88 | 47 | Spring - Release Slider | BV104-01 | ⇨ | ⇨ | 0.46 |
| 7 | Spool Cover | ZW051-01 | ⇨ | ⇨ | 1.03 | 48 | Washer - Release Slider G | SW121-01 | ⇨ | ⇨ | 0.52 |
| 8 | Spool Cover Screw | ZW125-01 | ⇨ | ⇨ | 0.54 | 49 | Screw - Release Slider | BV076-01 | ⇨ | ⇨ | 0.36 |
| 9 | Spool Tension Shim | QW032-04 | ⇨ | ⇨ | 0.54 | 50 | Flippin Switch | BV087-01 | ⇨ | ⇨ | 0.67 |
| 10 | Ball Bearing - Spool Shaft(L) | UW017-01 | N/A | N/A | 7.00 | 51 | Teeth Washer - Flippin Swi | BV126-01 | ⇨ | ⇨ | 0.36 |
| 11 | Bushing - Spool Shaft(L) | N/A | BV017-01 | ⇨ | 0.98 | 52 | Screw - Flippin Switch | QW123-01 | ⇨ | ⇨ | 0.15 |
| 12 | Clip Ring | QW080-01 | ⇨ | ⇨ | 0.54 | 53 | Right Side Cover | BV024-02 | BV024-03 | BV024-07 | 12.98 |
| 13 | Magnet Plate Assy | QW330-01 | ⇨ | ⇨ | 2.97 | 54 | Screw - Side Cover | BV123-01 | ⇨ | ⇨ | 0.72 |
| 14 | Magnet Plate Screw | QW076-01 | ⇨ | ⇨ | 0.69 | 55 | O-Ring - Tension Knob | QW101-01 | ⇨ | ⇨ | 0.27 |
| 15 | Spool Assy | ZW321-03 | ⇨ | ⇨ | 15.30 | 56 | Bushing - Tension Knob | QW117-01 | ⇨ | ⇨ | 0.21 |
| 16 | Clip Ring | QW080-01 | ⇨ | ⇨ | 0.54 | 57 | Washer - Spool Tension | QW032-04 | ⇨ | ⇨ | 0.54 |
| 17 | Bearing - Spool Shaft (R) | SW017-01 | ⇨ | ⇨ | 7.00 | 58 | Collar - Spool Tension | QW081-01 | ⇨ | ⇨ | 0.99 |
| 18 | Side cover Locking Lever | ZW119-01 | ⇨ | ⇨ | 1.03 | 59 | Spool Cushion Washer | QW082-01 | ⇨ | MV082-01 | 0.69 |
| 19 | Spring - Locking Lever | ZW096-01 | ⇨ | ⇨ | 1.03 | 60 | Spool Tension Knob | ZW033-01 | ⇨ | MV033-01 | 5.15 |
| 20 | Front Support | BV027-01 | ⇨ | BV027-04 | 3.35 | 61 | Bearing - Crank Shaft(L) | SW017-01 | N/A | N/A | 7.00 |
| 21 | E-Clip - Worm Shaft | NX092-01 | ⇨ | ⇨ | 0.31 | 62 | Bushing - Crank Shaft(L) | N/A | ZW017-01 | ⇨ | 0.67 |
| 22 | Washer - Worm Shaft | QW035-03 | ⇨ | ⇨ | 0.27 | 63 | E-Clip - Crank Shaft | QW120-01 | ⇨ | ⇨ | 0.27 |
| 23 | Bushing - Worm Shaft | QW067-01 | ⇨ | ⇨ | 0.69 | 64 | Retainer - Crank Shaft | BV002-01 | ⇨ | ⇨ | 0.98 |
| 24 | Frame | BV001-01 | ⇨ | BV001-03 | 18.54 | 65 | Screw - Crank Shaft Retain | QW107-01 | ⇨ | ⇨ | 0.47 |
| 25 | Retainer-Thumb bar(L) | ZW056-01 | ⇨ | ⇨ | 0.52 | 66 | Crank Shaft | ZW008-01 | ⇨ | ⇨ | 5.77 |
| 26 | Thumb Bar | BV009-01 | ⇨ | ⇨ | 0.72 | 67 | O/S Drive Gear | ZW112-01 | ⇨ | ⇨ | 1.60 |
| 27 | Flipping Cam | BV037-01 | ⇨ | ⇨ | 0.98 | 68 | Trip Ratchet | QW083-01 | ⇨ | ⇨ | 0.37 |
| 28 | Screw - Cover Stopper Collar | BV076-01 | ⇨ | ⇨ | 0.36 | 69 | Washer - Trip Ratchet | QW111-01 | ⇨ | ⇨ | 0.27 |
| 29 | Collar - Side Cover Stopper | BV088-01 | ⇨ | ⇨ | 0.88 | 70 | Drive Gear | VW012-01 | RW012-01 | VW012-01 | 11.28 |
| 30 | Stablizer Bar | ZW061-01 | ⇨ | ⇨ | 2.88 | 71 | Drag Disc | QW059-01 | ⇨ | ⇨ | 1.75 |
| 31 | Screw - Line Guide Carrier | ZW007-01 | ⇨ | ⇨ | 2.94 | 72 | Drag "D" Washer | QW045-01 | ⇨ | ⇨ | 0.84 |
| 32 | Washer - Carrier | BV035-01 | ⇨ | ⇨ | 0.41 | 73 | Sleeve - One Way Clutch | CW052-02 | ⇨ | ⇨ | 2.97 |
| 33 | Line Guide Pawl | ZW006-01 | ⇨ | ⇨ | 2.88 | 74 | One Way Bearing | UQ063-02 | ⇨ | ZW063-01 | 9.55 |
| 34 | Line Guide Carrier Assy | ZW347-01 | ⇨ | ⇨ | 5.87 | 75 | Ball Bearing - Crank Shaft | TW058-01 | ⇨ | ⇨ | 7.43 |
| 35 | Worm Shaft Guide | ZW016-01 | ⇨ | ⇨ | 2.06 | 76 | Washer - Crank Shaft | TW035-02 | ⇨ | ⇨ | 0.47 |
| 36 | Worm Shaft | ZW072-01 | ⇨ | ⇨ | 7.42 | 77 | Spring "D" Washer | QW046-02 | ⇨ | ⇨ | 1.01 |
| 37 | O/S Pinion Gear | ZW085-01 | ⇨ | ⇨ | 1.80 | 78 | Star Drag | ZW055-01 | ⇨ | ⇨ | 2.88 |
| 38 | E-Clip - O/S Pinion Ger | NX090-01 | ⇨ | ⇨ | 0.42 | 79 | Handle Washer | QW054-01 | ⇨ | ⇨ | 0.74 |
| 39 | Pinion Gear Assy | VW311-01 | RW311-01 | VW311-01 | 10.56 | 80 | Handle Assy | TW318-05 | ⇨ | ⇨ | 6.44 |
| 40 | E-Clip - Pinion Yoke Shaft | QW120-01 | ⇨ | ⇨ | 0.27 | 81 | Handle Nut | QW003-01 | ⇨ | ⇨ | 0.37 |
| 41 | Pinion Yoke | ZW025-01 | ⇨ | ⇨ | 1.03 | 82 | Handle Nut Cap | JX034-01 | ⇨ | ⇨ | 0.43 |
| 42 | Yoke Spring | QW040-01 | ⇨ | ⇨ | 0.69 | | Screw - Handle Nut Cap | QW123-01 | ⇨ | ⇨ | 0.15 |

| | | |
|-------------------------|-------------------------------------|----------------------|
| MODEL | EFFECTIVE DATE OF | DISCONTINUED: |
| INTRODUCED: 1996 | PARTS LIST/DIAGRAM: Oct. '98 | N / A |

Prices subject to change without notice. Prices do not include postage and handling.

PLEASE ORDER BY PART NUMBER

Zebco, P.O. Box 270, Tulsa, Ok 74101, 918-831-6965 Phone or 800-FIXREEL (349-7335) FAX

