

# Energy PT Parts Diagram - E761PT - Left-Hand

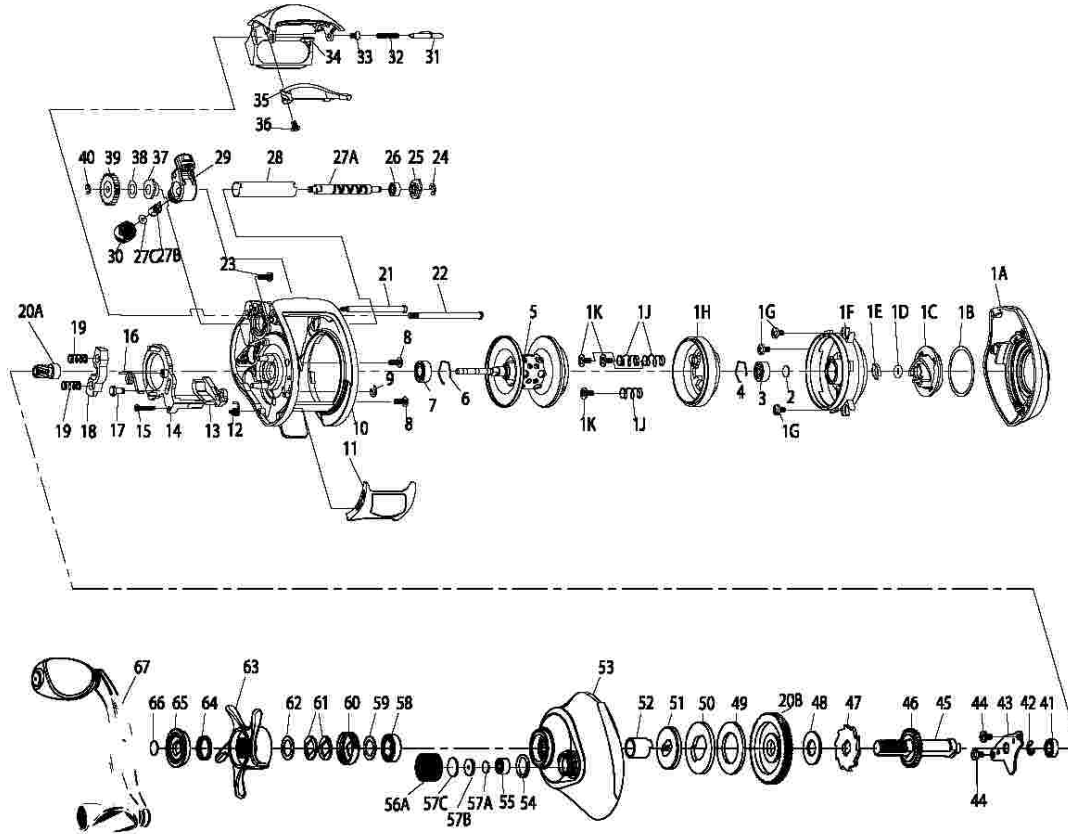
For parts and service

call toll free: 1-888-404-1119

www.mikesreelrepair.com

## ORDERING PARTS

Refer to the parts list and diagram for your model. Locate the part you need and identify the key number for the part you wish to order for your model. Always state the model number, part number, part description and quantity on your orders. Parts may be ordered direct from the Factory Service Department (1-800-588-9030), Authorized Warranty / Service Centers, and online at [www.tackleservice.com](http://www.tackleservice.com).



| KEY# | DESCRIPTION                         | E761PT    | KEY# | DESCRIPTION                       | E761PT    |
|------|-------------------------------------|-----------|------|-----------------------------------|-----------|
| 1    | Palm Side Cover Kit                 | VX4023-02 | 28   | Worm Shaft Guide                  | UX016-01  |
|      | 1A - Palm Side Cover Ass.           |           | 29   | Line Guide Carrier                | UX047-01  |
|      | 1B - Centrifugal Dial Washer        |           | 30   | Line Guide Carrier Screw          | ZW007-02  |
|      | 1C - Centrifugal Dial Ass.          |           | 31   | Side Cover Locking Lever          | TX119-02  |
|      | 1D - Centrifugal Dial Friction Ring |           | 32   | Side Cover Locking Lever Spring   | ZW096-01  |
|      | 1E - Centrifugal Dial Spring        |           | 33   | Hood Screw                        | HX107-01  |
|      | 1F - Spool Cover                    |           | 34   | Hood                              | UX027-01  |
|      | 1G - Spool Cover Screw              |           | 35   | Front Support                     | VX099-01  |
|      | 1H - Brake Ring Assembly            |           | 36   | Front Support Screw               | HX107-01  |
|      | 1J - Brake Ring Slider Spring       |           | 37   | Worm Shaft Bushing (Gear)         | HV068-01  |
|      | 1K - Brake Ring Retainer Screw      |           | 38   | O/S Pinion Gear Washer            | EX035-01  |
|      | 2 - Spool Tension Shim              |           | 39   | O/S Pinion Gear                   | UX085-01  |
|      | 3 - Spool Shaft Ball Bearing (Palm) |           | 40   | E-Clip                            | NX090-01  |
|      | 4 - Clip Ring                       |           | 41   | Crank Shaft Bearing - Lower       | SW017-01  |
| 2    | Spool Tension Shim                  | QW032-04  | 42   | E - Clip                          | QW120-01  |
| 3    | Spool Shaft Ball Bearing (Palm)     | QV017-01  | 43   | Crank Shaft Retainer              | UX002-01  |
| 4    | Clip Ring                           | HV080-01  | 44   | Crank Shaft Retainer Screw        | JX107-01  |
| 5    | Spool Assembly                      | UX321-05  | 45   | Crank Shaft                       | UX008-02  |
| 6    | Clip Ring                           | EX080-01  | 46   | O/S Drive Gear                    | UX112-01  |
| 7    | Spool Shaft Ball Bearing            | EX017-02  | 47   | Trip Ratchet                      | EX083-01  |
| 8    | Gear Side Cover Screw - B           | QW053-01  | 48   | Trip Ratchet Washer               | QW111-01  |
| 9    | E-Clip                              | NX092-01  | 49   | Drag Disc                         | UX059-01  |
| 10   | Frame Assembly                      | VX001-01  | 50   | Drag Key Washer                   | UX045-01  |
| 11   | Thumb Bar                           | VX009-01  | 51   | Link                              | UX036-01  |
| 12   | Kick Lever Spring                   | MX097-01  | 52   | One Way Bearing Sleeve            | UX052-01  |
| 13   | Kick Lever                          | VX077-01  | 53   | Gear Side Cover Assembly          | VX324-01  |
| 14   | Release Slider                      | VX039-01  | 54   | Tension Knob O-Ring               | QW101-01  |
| 15   | Thumb Bar Screw                     | ZW053-01  | 55   | Tension Knob Ball Bearing         | SW117-01  |
| 16   | Release Slider Spring               | RX104-01  | 56   | Spool Tension Kit                 | CX4033-05 |
| 17   | Release Slider Spring Pin           | UX102-01  |      | 56A - Spool Tension Knob Assembly |           |
| 18   | Pinion Yoke                         | GX025-01  |      | 57 - Spool Tension Washer Kit     |           |
| 19   | Yoke Spring                         | GX040-01  | 57   | Spool Tension Washer Kit          | QW4032-01 |
| 20   | Gear Kit                            | UX4011-02 |      | 57A - Spool Tension Washer        |           |
|      | 20A - Pinion Gear Assembly          |           |      | 57B - Spool Tension Washer        |           |
|      | 20B - Drive Gear                    |           |      | 57C - Spool Cushion Washer        |           |
| 21   | Stabilizer Bar - B                  | UX061-01  | 58   | Crank Shaft Ball Bearing          | TW058-01  |
| 22   | Stabilizer Bar - A                  | VX061-01  | 59   | Star Drag Washer                  | ZW032-01  |
| 23   | Gear Side Cover Screw - A           | BX123-01  | 60   | Drag Click Spring Assembly        | YX4114-01 |
| 24   | E-Clip                              | NX092-01  | 61   | Spring D Washer                   | JX046-01  |
| 25   | Bearing Retainer                    | CX067-01  | 62   | Star Drag Washer                  | ZW032-01  |
| 26   | Worm Shaft Ball Bearing             | XX117-01  | 63   | Star Drag                         | VX055-01  |
| 27   | Worm Shaft Kit                      | HV4072-02 | 64   | Handle Ratchet Spring             | UX040-01  |
|      | 27A - Worm Shaft                    |           | 65   | Handle Ratchet                    | VX054-01  |
|      | 27B - Line Guide Pawl               |           | 66   | Handle Washer                     | VX032-01  |
|      | 27C - Carrier Washer                |           | 67   | Handle Assembly                   | VX318-01  |