

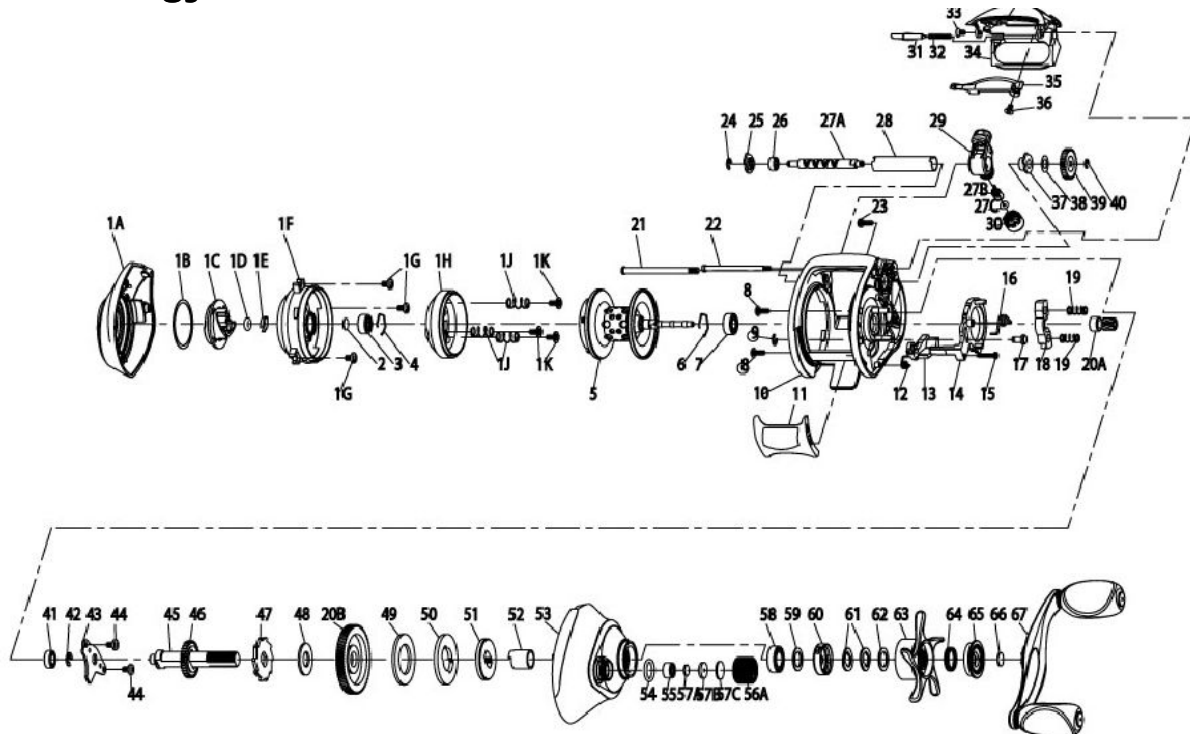
QUANTUM[®]

Energy E760PTs

For parts and service

call toll free: 1-888-404-1119

www.mikesreelrepair.com



Quantum Energy Salt Water E760PTs Part List					
Key No.	Description	E760PTs	Key No.	Description	E760PTs
1	Palm Side Cover Kit include	UX4023-05	28	Worm Shaft Guide	UX016-01
	1A - Palm Side Cover Assembly		29	Line Guide Carrier	UX047-01
	1B - Centrifugal Dial Washer		30	Line Guide Carrier Screw	ZW007-02
	1C - Centrifugal Dial Assembly		31	Side Cover Locking Lever	YX119-02
	1D - Centrifugal Dial Friction Ring		32	Side Cover Locking Lever Spring	ZW096-01
	1E - Centrifugal Dial Spring		33	Hood Screw	HX107-02
	1F - Spool Cover		34	Hood	UX027-04
	1G - Spool Cover Screw		35	Front Support	UX099-03
	1H - Brake Ring Assembly		36	Front Support Screw	HX107-02
	1J - Brake Ring Slider Spring		37	Worm Shaft Bushing (Gear)	HV068-01
	1K - Brake Ring Retainer Screw		38	O/S Pinion Gear Washer	EX035-01
	2 - Spool Tension Shim		39	O/S Pinion Gear	UX085-01
	3 - Spool Shaft Ball Bearing (Palm)		40	E-Clip	NX090-01
	4 - Clip Ring		41	Crank Shaft Bearing - Lower	SW017-01
2	Spool Tension Shim	QW032-04	42	E-Clip	QW120-01
3	Spool Shaft Ball Bearing (Palm)	QV017-02	43	Crank Shaft Retainer	UX002-01
4	Clip Ring	HV080-01	44	Crank Shaft Retainer Screw	JX107-02
5	Spool Assembly	UX321-08	45	Crank Shaft	UX008-01
6	Clip Ring	EX080-01	46	O/S Drive Gear	UX112-01
7	Spool Shaft Ball Bearing (Gear)	EX017-03	47	Trip Ratchet	EX083-01
8	Gear Side Cover Screw - B	QW053-03	48	Trip Ratchet Washer	QW111-01
9	E-Clip	NX092-01	49	Drag Disc	UX059-01
10	Frame	UX001-06	50	Drag Key Washer	UX045-01
11	Thumb Bar	UX009-01	51	Link	UX036-01
12	Kick Lever Spring	GX097-01	52	One Way Bearing Sleeve	UX052-01
13	Kick Lever	UX077-01	53	Gear Side Cover Assembly	UX324-06
14	Release Slider	UX039-01	54	Tension Knob O-Ring	QW101-01
15	Thumb Bar Screw	ZW053-01	55	Tension Knob Ball Bearing	SW117-01
16	Release Slider Spring	CX104-01	56	Spool Tension Kit Include	CX4033-06
17	Release Slider Guide Pin	UX102-02		56A - Spool Tension Knob Assembly	
18	Pinion Yoke	GX025-01	57	Spoon Tension Washer Kit	QW4032-01
19	Yoke Spring	GX040-01	57	Spool Tension Washer Kit Include	
20	Gear Kit include	UX4011-01	57A - Spool Tension Washer		
	20A - Pinion Gear Assembly		57B - Spool Tension Collar		
	20B - Drive Gear		57C - Spool Cushion Washer		
21	Stabilizer Bar - B	UX061-02	58	Crank Shaft Ball Bearing	TW058-01
22	Stabilizer Bar - A	VX061-01	59	Star Drag Washer	ZW032-01
23	Gear Side Cover Screw - A	BV123-03	60	Drag Click Spring Assembly	YX4114-01
24	E-Clip	NX092-01	61	Spring "D" Washer	JX046-01
25	Bearing Retainer	CX067-01	62	Star Drag Washer	ZW032-01
26	Worm Shaft Ball Bearing	XX117-01	63	Star Drag	UX055-01
27	Worm Shaft Kit Include	HV4072-02	64	Handle Ratchet Spring	UX040-01
	27A - Worm Shaft		65	Handle Ratchet	UX054-01
	27B - Line Guide Pawl		66	Handle Washer	UX032-01
	27C - Carrier Washer		67	Handle Assembly	UX318-03