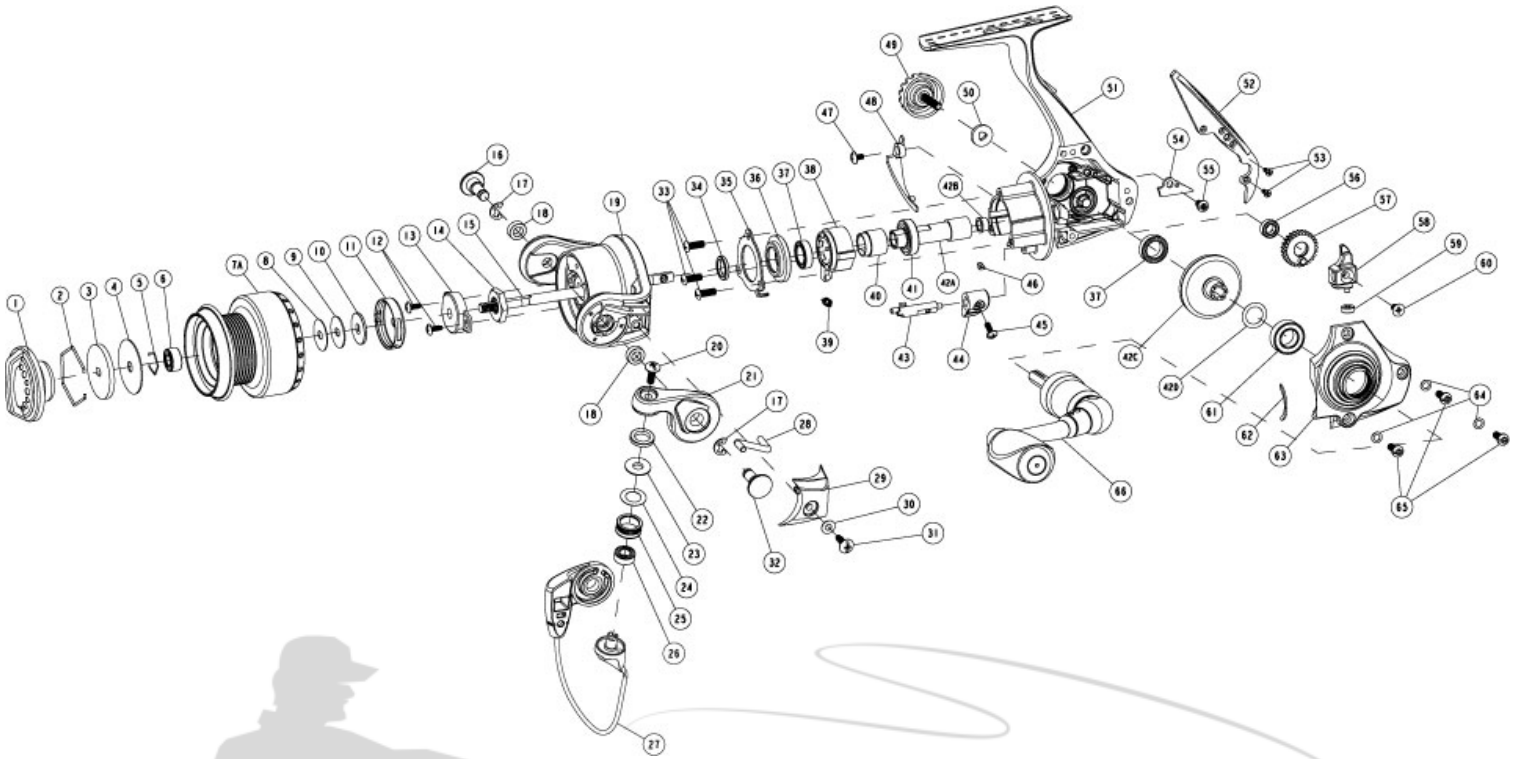


QUANTUM[®]

Catalyst

CT10PTIC



Quantum CT10PTIC Spinning Reel Part List

Key #	Description	Qty.	Part No.	Key #	Description	Qty.	Part No.
1	Drag Knob Assembly	1	MG332-11	33	Screw	3	RQ057-01
2	Retainer Ring	1	RQ038-01	34	Rotor Adjust Washer	1	EAB105-01
3	Drag Washer "D"	1	SQ080-01	35	Clutch Retainer	1	EAB060-01
4	Drag Washer "B"	1	RQ033-01	36	Ball Bearing Holder	1	EAB166-01
5	Spool Ball Bearing Retainer	1	HV080-01	37	Clutch Retainer Ball Bearing	2	CH027-01
6	Spool Ball Bearing	1	PG027-01	38	Clutch Unit	1	EAB063-01
7	Spool Assembly Kit	1	MG4320-11	39	Spring-Clutch Retainer	1	EAB216-01
7A	Spool Assembly	1	N/A	40	Clutch Sleeve	1	EAB139-01
2	Retainer Ring	1	RQ038-01	41	Pinion Ball Bearing	1	AAA028-01
3	Drag Washer "D"	1	SQ080-01	42	Gear Kit	1	EAB4011-01
4	Drag Washer "B"	1	RQ033-01	42A	Pinion	1	MG011-01
5	Spool Ball Bearing Retainer	1	HV080-01	42B	Pinion Bushing	1	MG141-01
6	Spool Ball Bearing	1	PG027-01	42C	Drive Gear	1	PQ012-01
8	Spool Adjust Washer	1	PG030-02	42D	Drive Gear Adjust Washer	1	GU105-08
9	Spool Adjust Washer	1	PG030-01	43	Stopper Cam	1	EAB090-01
10	Spool Washer	1	PG080-01	44	Stopper Lever	1	EAB059-01
11	Spool Click Unit	1	PG4114-01	45	Stopper Lever Screw	1	EAB135-02
12	Rotor Nut Lock Screw	2	MG094-01	46	Stopper Cam Spring	1	EAB089-01
13	Main Shaft Bushing	1	TK214-01	47	Trip Bumper Screw	1	AAB057-01
14	Rotor Nut	1	SH006-01	48	Trip Bumper	1	MG243-01
15	Main Shaft	1	EAB015-01	49	Handle Screw Assembly	1	TK373-21
16	Pin	1	QG042-01	50	Handle Screw Washer	1	TH105-01
17	E-Clip	2	GH034-01	51	Body Assembly	1	EAB301-01
18	Rotor Ball Bearing	2	EH158-01	52	Body Rear Cap	1	EP250-01
19	Rotor Assembly	1	MG309-11	53	Screw	2	PG107-01
20	Line Roller Screw	1	AQ108-02	54	O/S Slider Retainer	1	MG078-01
21	Arm Lever Assembly	1	MG307-11	55	Screw	1	TK057-01
22	Line Roller Bushing	1	WP141-01	56	O/S Gear Ball Bearing	1	EH158-01
23	Line Roller Collar	1	PQ102-01	57	O/S Gear	1	PQ053-51
24	Line Roller Washer	1	PQ102-51	58	O/S Slider	1	MG025-01
25	Line Roller	1	PQ004-02	59	O/S Slider Bushing	1	PG227-01
26	Line Roller Ball Bearing	1	GH202-01	60	Main Shaft Screw	1	RQ100-01
27	Bail Assembly	1	MG347-11	61	Side Cover Ball Bearing	1	CH028-01
28	Kick Lever	1	MG019-01	62	Pad	1	MG140-01
29	Arm Lever Cover	1	MG087-03	63	Side Cover Assembly	1	EAB323-01
30	Arm Lever Cover Washer	1	SQ142-01	64	Side Cover Screw Washer	3	RQ142-01
31	Arm Lever Cover Screw	1	GU077-02	65	Side Cover Screw	3	RQ057-02
32	Pin	1	PG042-11	66	Handle Assembly	1	DP318-03