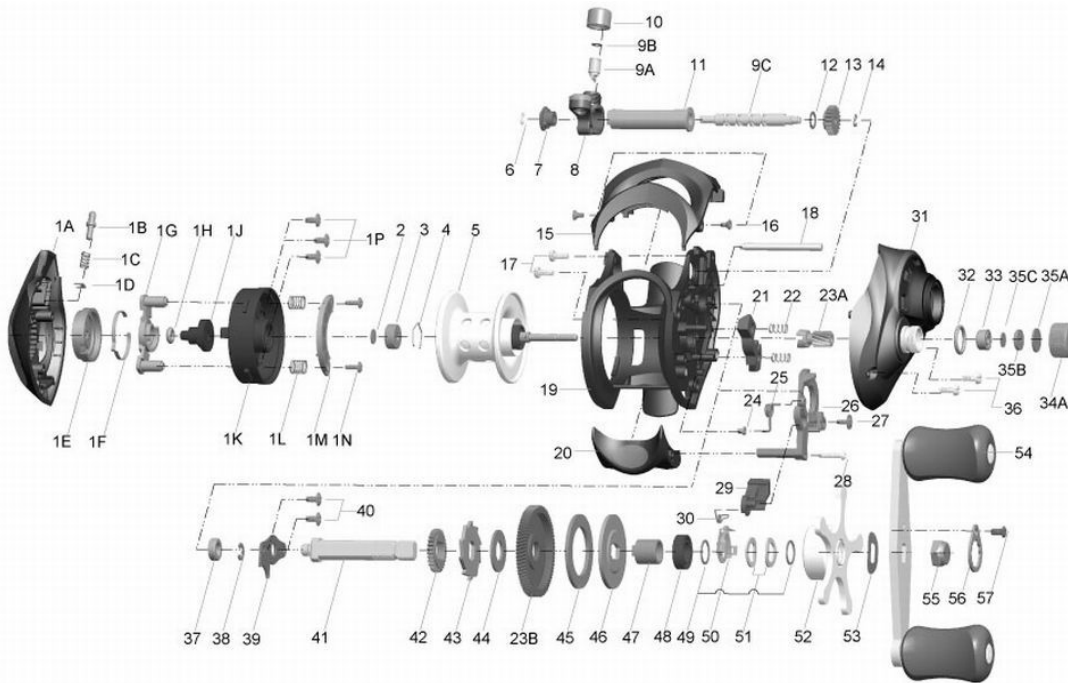


# QUANTUM

## Burst BU670CX

For Parts and Service  
Call 1-888-404-1119  
www.mikesreelrepair.com



**Quantum Burst BU670CX Bait Cast Reel Part List**

Key #	Description	Part No.	Key #	Description	Part No.
1	Palm Side Cover Kit	MW4023-01	23	Gear Kit	KW4011-01
1A	Palm Side Cover Assembly	MW323-01	23A	Pinion Gear	KW011-01
1B	Palm Side Locking Lever	MW119-01	23B	Drive Gear	VX012-01
1C	Locking Lever Spring	MW096-01	24	Release Slider Spring Bushing	MW103-01
1D	Locking Pin Retainer	MW159-01	25	Release Slider Spring	KW104-01
1E	Cast Control Dial	MW026-01	26	Release Slider	KW039-01
1F	Control Dial Clicker Spring	MW108-01	27	Release Slider Screw	KW125-01
1G	Slide Cam "A"	MW028-01	28	Thumb Bar Screw	ZW053-01
1H	Control Dial Friction Ring	NX105-01	29	Kick Lever	KW077-01
1J	Slide Cam "B"	KW028-01	30	Kick Lever Spring	KW097-01
1K	Spool Cover	MW051-01	31	Gear Side Cover Assembly	MW324-01
1L	Magnet Plate Spring	MW071-01	32	Spool Tension Knob O-Ring	QW101-01
1M	Magnet Plate Assembly	MW330-01	33	Spool Tension Knob Bearing	SW117-01
1N	Magnet Plate Screw	QW076-01	34	Spool Tension Knob Kit	MW4033-01
1P	Spool Cover Screw	ZW125-01	34A	Spool Tension Knob	MW033-01
2	Spool Shaft Washer (Palm Side)	QW032-04	35	Spool Tension Washer Kit	QW4032-01
3	Spool Shaft Ball Bearing (Palm Side)	QV017-01	35	Spool Tension Washer Kit	QW4032-01
4	Bearing Retainer Ring	HV080-01	35A	Spool Cushion Washer	QW082-01
2	Spool Shaft Washer (Palm Side)	QW032-04	35B	Spool Tension Collar	QW081-01
3	Spool Shaft Ball Bearing (Palm Side)	QV017-01	35C	Spool Tension Washer	QW032-04
4	Bearing Retainer Ring	HV080-01	36	Gear Side Cover Screw	BV123-01
5	Spool Assembly	MW321-01	37	Crank Shaft Bearing (Frame Side)	SW017-01
6	Worm Shaft E-Clip (Palm Side)	NX090-01	38	Crank Shaft E-Clip	QW120-01
7	Worm Shaft Bushing	KW067-01	39	Crank Shaft Retainer Plate	KW002-01
8	Line Guide Carrier Assembly	KW347-02	40	Crank Shaft Retainer Plate Screw	QW125-02
9	Worm Shaft Kit	KW4072-01	41	Crank Shaft	MW008-01
9A	Worm Shaft	KW072-01	42	Worm Shaft Drive Gear	ZW112-01
9B	Line Guide Pawl Washer	BV035-01	43	Trip Ratchet	KW083-01
9C	Line Guide Pawl	KW006-01	44	Trip Ratchet Washer	QW111-01
10	Line Guide Pawl Screw	KW007-01	45	Drag Washer	UX059-01
11	Worm Shaft Guide	KW016-01	46	Drag Key Washer	KW045-01
12	Worm Shaft Washer (Gear Side)	KW035-01	47	One Way Clutch Sleeve	KW052-01
13	Worm Shaft Pinion Gear	HV085-01	48	Crank Shaft Bearing (Handle Side)	TW058-02
14	Worm Shaft E-Clip (Gear Side)	NX090-01	49	Star Drag Washer	KW032-01
15	Front Support	MW099-01	50	Star Drag Clicker Spring Assembly	ZW4114
16	Front Support Screw	MW107-01	51	Star Drag Spring Washer	JX046-01
17	Gear Side Cover Screw	BV123-01	52	Star Drag Assembly	KW355-01
18	Pillar	MW061-01	53	Handle Spring Washer	QW054-01
19	Frame	MW001-01	54	Handle Assembly	MW318-01
20	Thumb Bar Assembly	KW309-01	55	Handle Nut	KW003-01
21	Pinion Yolk	KW025-01	56	Handle Nut Retainer	KW034-01
22	Pinion Yolk Spring	KW040-01	57	Handle Nut Retainer Screw	QW123-01