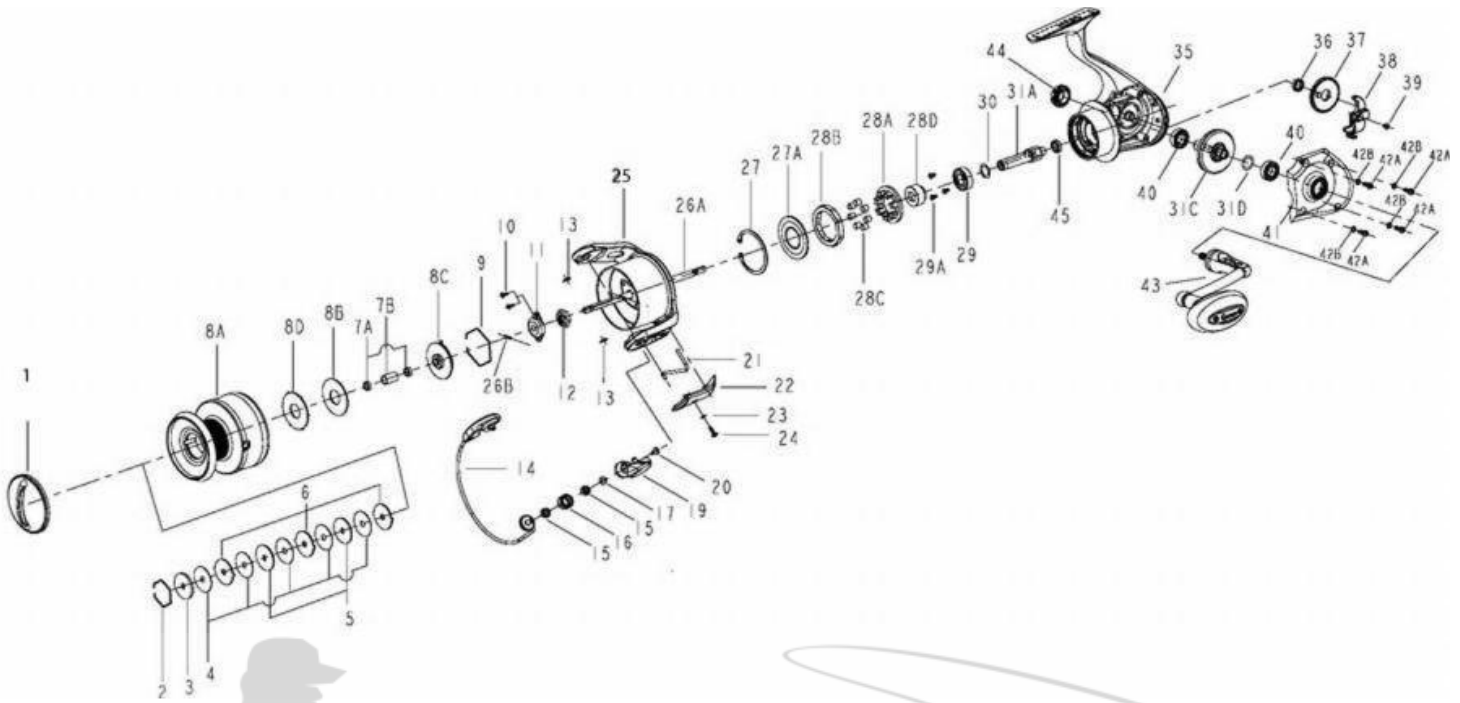


QUANTUM

Boca BSP70PTsA



Boca BSP70PTs Part List

| KEY # | DESCRIPTION | BOCA 70 | KEY # | DESCRIPTION | BOCA 70 |
|-------|--------------------------------|-----------|-------|-----------------------------|-----------|
| 1 | DRAG KNOB ASSEMBLY | DT332-01 | 23 | ARM LEVER COVER WASHER | SQ142-01 |
| 2 | SPOOL RETAINER - TOP | BT038-02 | 24 | A/L COVER SCREW | GU077-02 |
| 3 | DRAG WASHER "C" | CT080-01 | 25 | ROTOR ASSEMBLY | DT309-01 |
| 4 | DRAG WASHER "B" | BT033-01 | 26 | MAIN SHAFT KIT | DT4015-01 |
| 5 | DRAG WASHER "D" | BT080-01 | 26A | MAIN SHAFT | N/A |
| 6 | DRAG WASHER "A" | BT081-01 | 26B | MAIN SHAFT PIN | N/A |
| 7 | SPOOL BUSHING OR BEARING KIT | BT4160-01 | 27 | RETAINER RING, CLUTCH SEAL | DT060-01 |
| 7A | SPOOL BUSHING OR BEARING | N/A | 27A | CLUTCH SEAL | DT166-01 |
| 7B | SPOOL SPACER | N/A | 28 | CLUTCH ASSEMBLY KIT | VK4363-01 |
| 8 | SPOOL ASSEMBLY KIT | DT4321-01 | 28A | CLUTCH RETAINER | N/A |
| 8A | SPOOL ASSEMBLY | N/A | 28B | CLUTCH RING | N/A |
| 2 | SPOOL RETAINER - TOP | N/A | 28C | CLUTCH ROLLERS | N/A |
| 3 | DRAG WASHER "C" KEYED TO SHAFT | N/A | 28D | CLUTCH SLEEVE | N/A |
| 4 | DRAG WASHER "B", FIBER | N/A | 29 | PINION BALL BEARING | DT157-01 |
| 5 | DRAG WASHER "D" KEYED TO SHAFT | N/A | 29A | SCREW , BALL BEARING, 3 EA. | TK057-01 |
| 6 | DRAG WASHER "A" KEYED TO SPOOL | N/A | 30 | PINION GEAR WASHER | BT110-01 |
| 7 | SPOOL BUSHING OR BEARING KIT | N/A | 31 | GEAR KIT | DT4011-01 |
| 8B | SPOOL WASHER, FIBER | N/A | 31A | PINION GEAR | N/A |
| 8C | DRAG CLICK ASSEMBLY | BT459-01 | 31B | PINION BUSHING | N/A |
| 8D | DRAG WASHER "E" KEYED TO SPOC | N/A | 31C | DRIVE GEAR ASSEMBLY | N/A |
| 9 | SPOOL RETAINER - BOTTOM | N/A | 31D | D.GEAR ADJUST WASHER | N/A |
| 9 | SPOOL RETAINER - BOTTOM | BT038-01 | 35 | BODY ASSEMBLY | DT301-01 |
| 10 | ROTOR NUT LOCK SCREW | RQ094-01 | 36 | O/S GEAR BUSHING OR BEARING | BT158-01 |
| 11 | MAIN SHAFT BUSHING | DT214-01 | 37 | O/S GEAR | DT053-01 |
| 12 | ROTOR NUT | BT006-01 | 38 | O/S SLIDER | DT025-01 |
| 13 | E-CLIP - BAIL ASSEMBLY | GH034-01 | 39 | MAIN SHAFT SCREW | RQ100-01 |
| 14 | BAIL ASSEMBLY | DT347-01 | 40 | BODY/COVER BALL BEARING | BT157-01 |
| 15 | LINE ROLLER BEARING, 2 EA. | GH202-01 | 41 | BODY COVER | DT023-01 |
| 16 | LINE ROLLER | TK004-01 | 42 | BODY COVER SCREW KIT | DT4057-01 |
| 17 | LINE ROLLER WASHER | DT229-01 | 42A | BODY COVER SCREW | N/A |
| 19 | ARM LEVER ASSEMBLY | BT307-02 | 42B | SCRATCH PROTECT WASHER | N/A |
| 20 | SCREW - LINE SLIDER | AQ108-01 | 43 | HANDLE ASSY | DT318-01 |
| 21 | KICK LEVER | DT019-01 | 44 | HANDLE CAP | BT073-01 |
| 22 | ARM LEVER COVER | DT087-01 | 45 | PINION SMALL BALL BEARING | DT027-01 |