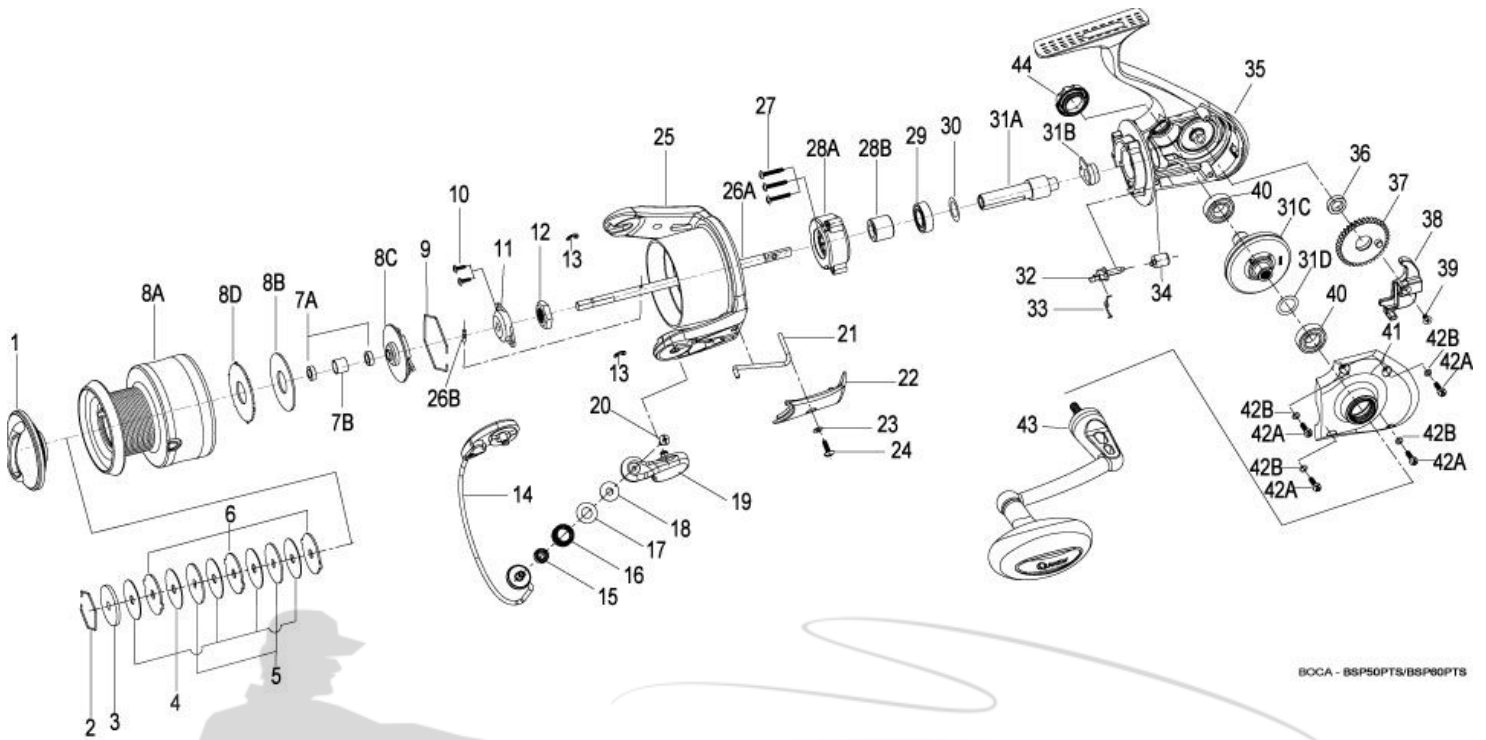


QUANTUM[®]

BSP60PTSA



BOCA - BSP50PTS/BSP60PTS

Quantum BSP60PTSA Spinning Reel Part List

Key #	Description	Part No.	Key #	Description	Part No.
1	DRAG KNOB ASSEMBLY	BT332-01	27	SCREW - CLUTCH	AT041-01
2	SPOOL RETAINER - TOP	BT038-02	28	CLUTCH ASSEMBLY KIT	CT4360-01
3	DRAG WASHER "D"	CT080-02	28-A	CLUTCH ASSEMBLY	N/A
4	DRAG WASHER "B"	BT033-01	28-B	CLUTCH SLEEVE	N/A
5	DRAG WASHER "D"	BT080-01	29	PINION BALL BEARING	BT157-01
6	DRAG WASHER "A"	BT081-01	30	PINION GEAR WASHER	BT110-01
7	SPOOL BUSHING OR BEARING KIT	BT4160-01	31	GEAR KIT	BT4011-01
7-A	SPOOL BUSHING OR BEARING	N/A	31-A	PINION GEAR	N/A
7-B	SPOOL SPACER	N/A	31-B	PINION BUSHING	N/A
8	SPOOL ASSEMBLY KIT	CT4321-01	31-C	DRIVE GEAR ASSEMBLY	N/A
8-A	SPOOL ASSEMBLY	N/A	31-D	D.GEAR ADJUST WASHER	N/A
8-B	SPOOL WASHER	N/A	32	A/R CAM	BT090-01
8-C	DRAG CLICK ASSEMBLY	N/A	33	A/R CAM SPRING	RQ089-01
8-D	DRAG WASHER "E"	N/A	34	A/R LEVER	RQ059-01
9	SPOOL RETAINER - BOTTOM	BT038-01	35	BODY ASSEMBLY	BT301-02
10	ROTOR NUT LOCK SCREW	RQ094-01	36	O/S GEAR BUSHING OR BEARING	BT158-01
11	MAIN SHAFT BUSHING	BT214-01	37	O/S GEAR	BT053-01
12	ROTOR NUT	BT006-01	38	O/S SLIDER	BT025-01
13	E-CLIP - BAIL ASSEMBLY	GH034-01	39	MAIN SHAFT SCREW	RQ100-01
14	BAIL ASSEMBLY	BT347-01	40	BODY BALL BEARING	BT157-01
15	LINE ROLLER BEARING	GH202-01	41	BODY COVER	BT023-02
16	LINE ROLLER	CH004-02	42	BODY COVER SCREW KIT	AT4057-02
17	LINE ROLLER WASHER	DH102-01	42-A	BODY COVER SCREW	N/A
18	LINE ROLLER COLLAR	CH102-01	42-B	SCRATCH PROTECT WASHER	N/A
19	ARM LEVER ASSEMBLY	BT307-01	43	HANDLE ASSY	BT318-02
20	SCREW - LINE SLIDER	AQ108-01	44	HANDLE COVER - DUST CAP	BT073-01
21	KICK LEVER	BT019-01	45	PINION SMALL BALL BEARING	N/A
22	ARM LEVER COVER	BT087-01	46	HANDLE CAP SCREW KIT (ALTER	N/A
23	ARM LEVER COVER WASHER	SQ142-01	44-A	HANDLE CAP SCREW	N/A
24	A/L COVER SCREW	GU077-02	44-B	H / CAP SCREW WASHER	N/A
25	ROTOR ASSEMBLY	BT309-02	53	Star Drag Assembly	YX355-07
26	MAIN SHAFT KIT	BT4015-01	54	Handle Washer	NX054-01
26-A	MAIN SHAFT	N/A	55	Handle Assembly	YX318-04
26-B	MAIN SHAFT PIN	N/A	56	Drag Link	UX036-01