

# QUANTUM.

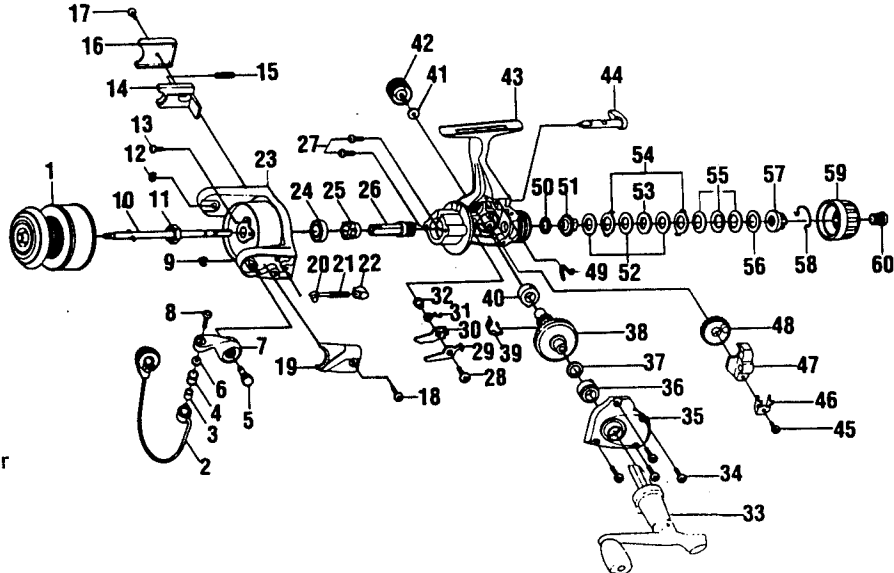
## BT2 / BT3 (B.A.S.S. Tour - Kmart exclusive)

### SPECIFICATIONS :

Application:  
 BT2 - Lt. FW  
 BT3 - Med. FW  
 5.2:1 Gear Ratio  
 Line Capacity:  
 BT2 - 140 yds / 6 lb  
 BT3 - 160 yds / 8 lb  
 Retrieve Rate (Inches Per Turn):  
 BT2 - 24.5"  
 BT3 - 30.2"  
 Weight:  
 BT2 - 9.9 oz.  
 BT3 - 12.4 oz.  
 3 Ball Bearings

### FEATURES :

Front Drag  
 Tru-Balanced Rotor  
 Balanced Handle  
 Oversized Twist Reducer Line Roller  
 Selective On/Off A/R  
 Geared (S-Curve) O/S System  
 Aluminum Spool  
 Spare Graphite Spool  
 Color: Gray



| Key No. | Part No. BT2 | Part No. BT3 | DESCRIPTION             | Price | Key No. | Part No. BT2 | Part No. BT3 | DESCRIPTION              | Price |
|---------|--------------|--------------|-------------------------|-------|---------|--------------|--------------|--------------------------|-------|
| 1       | JH321-43     | JH321-44     | Spool Assy.             | 6.30  | 31      | GU061-01     | JU061-01     | A/R Pawl Spring          | 0.37  |
| 2       | JH347-15     | JH347-16     | Bail Assy.              | 4.38  | 32      | GU091-01     | GU091-02     | A/R Pawl Post            | 0.27  |
| 3       | MT016-01     | ←            | Line Roller Bushing     | 0.77  | 33      | JH318-17     | JH318-18     | Handle Assy.             | 4.95  |
| 4       | KH004-02     | ←            | Line Roller             | 1.24  | 34      | GU057-02     | JU057-03     | Body Cover Screw         | 0.81  |
| 5       | HU051-01     | HU051-03     | Arm Lever Pin           | 0.59  | 35      | JH323-15     | KH323-16     | Body Cover               | 3.85  |
| 6       | GU105-07     | ←            | Line Roller Washer      | 0.15  | 36      | GU157-01     | AQ028-02     | Gear Shaft B. Bearing    | 6.95  |
| 7       | JH007-03     | ←            | Arm Lever               | 0.93  | 37      | GU105-08     | GU105-13     | Adjustment Washer        | 0.15  |
| 8       | KQ108-01     | ←            | Line Slider Screw       | 0.32  | 38      | GU012-01     | JU012-02     | Drive Gear               | 2.97  |
| 9       | KQ034-01     | ←            | E-Clip                  | 0.15  | 39      | GU086-01     | JU086-01     | Silent Cam               | 0.42  |
| 10      | JU315-02     | JU315-01     | Main Shaft              | 1.06  | 40      | GU157-01     | AQ028-02     | Gear Shaft B. Bearing    | 6.95  |
| 11      | GU006-01     | GU006-02     | Rotor Nut               | 0.84  | 41      | GU105-01     | ←            | Handle Cap Washer        | 0.10  |
| 12      | KQ034-01     | ←            | E-Clip                  | 0.15  | 42      | XU073-03     | ←            | Handle Cap Screw         | 0.62  |
| 13      | GU077-08     | ←            | Rotor Nut Lck. Scrw.    | 0.15  | 43      | JH001-15     | KH001-16     | Body Assy.               | 6.50  |
| 14      | HU019-01     | JU019-01     | Kick Lever              | 1.06  | 44      | KH090-03     | ←            | A/R Lever                | 1.49  |
| 15      | KQ049-04     | KQ049-06     | Kick Lever Spring       | 0.26  | 45      | JU100-01     | ←            | O/S Retainer Screw       | 0.27  |
| 16      | HU046-06     | JU046-05     | Kick Lever Cover        | 0.26  | 46      | HU078-01     | JU078-01     | O/S Slide Retainer       | 0.27  |
| 17      | GU077-02     | ←            | Kick Lever Cover Screw  | 0.15  | 47      | HU025-01     | JU025-01     | Oscillator Slider        | 1.06  |
| 18      | GU077-02     | ←            | Arm Lever Cover Screw   | 0.15  | 48      | HU053-01     | JU053-01     | Oscillator Gear          | 1.06  |
| 19      | JH087-05     | KH087-04     | Arm Lever Spring Cover  | 0.26  | 49      | GU089-01     | ←            | A/R Lever Spring         | 0.54  |
| 20      | KQ031-01     | NL031-01     | Arm Lever Spring Pin    | 0.27  | 50      | GU105-34     | GU105-32     | Drag Friction Washer 'A' | 0.81  |
| 21      | KQ049-05     | KQ049-02     | Arm Lever Spring        | 0.32  | 51      | HU075-01     | JU075-01     | Drag Click Gear          | 0.64  |
| 22      | QL020-01     | ←            | Arm Lever Spring Holder | 0.32  | 52      | GU105-34     | GU105-33     | Drag Washer "B"          | 0.81  |
| 23      | HU009-22     | JU009-23     | Rotor                   | 6.35  | 53      | HU080-01     | JU080-01     | Drag Washer "D"          | 0.54  |
| 24      | AQ028-01     | AQ028-06     | Pinion Ball Bearing     | 6.47  | 54      | HU081-01     | JU081-01     | Drag Washer "A"          | 0.54  |
| 25      | HU060-01     | JU060-01     | A/R Ratchet             | 2.49  | 55      | HU043-01     | JU043-01     | Drag Spring              | 0.69  |
| 26      | GU011-02     | JU011-01     | Pinion Gear             | 2.44  | 56      | GU105-24     | GU105-19     | Drag Washer              | 0.94  |
| 27      | GU077-01     | JU077-01     | Bearing Screw           | 0.64  | 57      | HU066-01     | JU066-01     | Drag Nut                 | 0.64  |
| 28      | GU077-05     | ←            | A/R Pawl Screw          | 0.15  | 58      | HU070-01     | JU083-01     | Drag Retainer            | 1.16  |
| 29      | GU063-01     | JU063-01     | A/R Pawl "A" (CNTR)     | 1.01  | 59      | MU332-01     | KU332-01     | Drag Knob Assy.          | 0.77  |
| 30      | GU074-01     | JU074-01     | A/R Pawl "B" (ON)       | 1.01  | 60      | JH101-03     | KH101-03     | Drag Knob Screw          | 0.62  |

|                          |                                     |                           |
|--------------------------|-------------------------------------|---------------------------|
| <b>MODEL</b>             | <b>EFFECTIVE DATE OF</b>            |                           |
| <b>INTRODUCED : 1998</b> | <b>PARTS LIST/DIAGRAM: Oct. '98</b> | <b>DISCONTINUED : N/A</b> |

Prices subject to change without notice. Prices do not include postage and handling.  
 PLEASE ORDER BY PART NUMBER

Zebco, P.O. Box 270, Tulsa, Ok. 74101; 918-831-6965 Phone or 800-FIXREEL (349-7335) FAX

