

QUANTUM

BR170A/BR370A

SPECIFICATIONS:

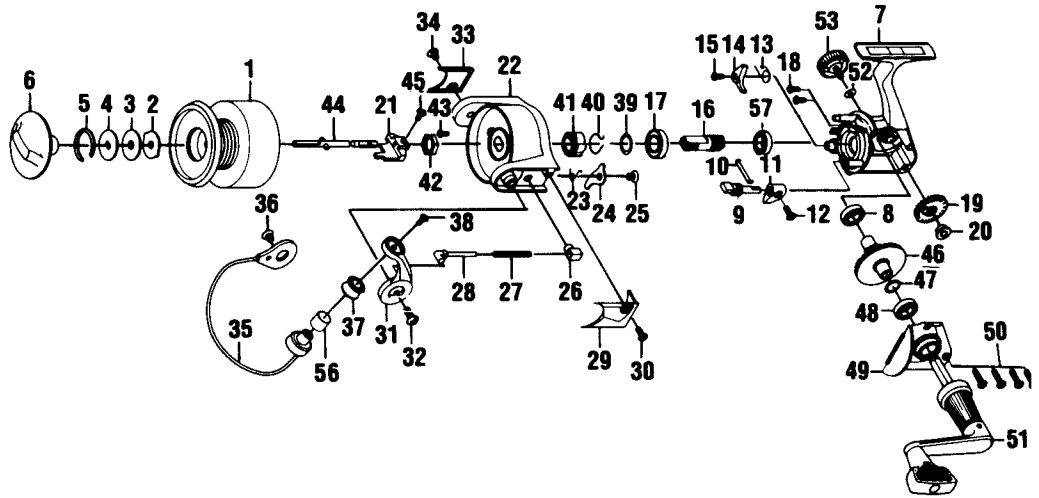
Heavy Saltwater
 260 yds/20 lb Line Capacity
 4.8:1 Gear Ratio
 18.6 oz. Weight

BR170A: 1 Ball Bearing

BR370A: 3 Ball Bearing

FEATURES:

Oversized Front Drag and Center Shaft
 Right/Left Interchangeable Handle
 Magnum Gears
 Selective Anti-Reverse
 Internal Bail Trip
 Oversized "Twist Reducer" Line Roller
 Aluminum Long Stroke
 Color: BR170A - Light Tan
 BR370B - Dark Grey



| Key No. | BR170A Part No. | BR370B Part No. | Description | Price | Key No. | BR170A Part No. | BR370B Part No. | Description | Price |
|---------|-----------------|-----------------|---------------------|-------|---------|-----------------|-----------------|----------------------|-------|
| 1 | BH321-62 | BH321-63 | Spool Assembly | 11.89 | 31 | BH007-62 | N/A | Arm Lever | 1.65 |
| 2 | BH081-21 | BH081-21 | Spool Washer "A" | .59 | 31 | N/A | BH007-61 | Arm Lever | 1.60 |
| 3 | BH033-21 | BH033-21 | Spool Washer "B" | .64 | 32 | BH044-11 | N/A | Arm Lever Screw | .64 |
| 4 | BH080-31 | BH080-31 | Spool Washer "D" | .96 | 32 | N/A | BH044-13 | Arm Lever Screw | .42 |
| 5 | BH038-21 | BH038-21 | Drag Retainer | 1.01 | 33 | BH024-62 | BH024-63 | Bail Holder Cover | 1.03 |
| 6 | BH332-41 | BH332-46 | Drag Knob Assembly | 3.34 | 34 | BH085-11 | N/A | Cover Screw | .64 |
| 7 | BH001-62 | BH001-63 | Body | 6.90 | 34 | N/A | BH085-13 | Cover Screw | .47 |
| 8 | BH027-71 | N/A | Body Bushing | .77 | 35 | BH347-62 | BH347-61 | Bail Assembly | 3.19 |
| 8 | N/A | BH027-61 | Ball Bearing | 7.96 | 36 | BH044-11 | N/A | Bail Holder Screw | .64 |
| 9 | BH090-11 | BH090-11 | Stopper Cam | 1.60 | 36 | N/A | BH044-13 | Bail Holder Screw | .42 |
| 10 | BH089-11 | BH089-11 | Stopper Cam Spring | .96 | 37 | BH004-12 | BH004-12 | Line Roller | 3.19 |
| 11 | BH059-11 | BH059-14 | Stopper Lever | 1.08 | 38 | BH108-11 | N/A | Bail Screw | .64 |
| 12 | BH135-11 | BH135-12 | Stopper Lever Screw | .64 | 38 | N/A | BH108-13 | Bail Screw | .42 |
| 13 | BH061-61 | BH061-61 | Stopper Spring | 1.44 | 39 | BH110-61 | BH110-61 | Bearing Washer | 1.28 |
| 14 | BH063-61 | BH063-61 | Stopper | 1.28 | 40 | BH086-61 | BH086-61 | Silent Spring | 1.65 |
| 15 | BH077-61 | BH077-61 | Stopper Screw | .52 | 41 | BH060-61 | BH060-61 | Ratchet Gear | 1.28 |
| 16 | BH011-61 | BH011-61 | Pinion Gear | 3.34 | 42 | BH006-61 | BH006-61 | Rotor Nut | 1.28 |
| 17 | BH028-61 | BH028-61 | Ball Bearing | 7.96 | 43 | BH094-11 | BH094-11 | Rotor Nut Lock Screw | .94 |
| 18 | BH041-61 | BH041-61 | Bearing Screw | .54 | 44 | BH315-61 | BH315-61 | Main Shaft Assembly | 3.08 |
| 19 | BH053-61 | BH053-61 | O/S Gear | 1.65 | 45 | BH100-61 | BH100-61 | Main Shaft Screw | .54 |
| 20 | BH158-61 | BH158-61 | O/S Gear Bushing | .93 | 46 | BH012-71 | BH012-71 | Driver Gear | 3.23 |
| 21 | BH025-61 | BH025-61 | O/S Slider | 2.17 | 47 | BH026-61 | BH026-61 | Adjust Washer | 1.06 |
| 22 | BH009-62 | BH009-63 | Rotor | 6.90 | 48 | BH027-71 | N/A | Body Cover Bushing | .77 |
| 23 | BH049-61 | BH049-61 | Kick Lever Spring | .96 | 48 | N/A | BH027-61 | Ball Bearing | 7.96 |
| 24 | BH019-61 | BH019-61 | Kick Lever | 1.65 | 49 | BH023-62 | BH023-63 | Body Cover | 2.76 |
| 25 | BH136-61 | BH136-61 | Kick Lever Screw | .64 | 50 | BH057-11 | BH057-13 | Body Cover Screw | .64 |
| 26 | BH020-11 | BH020-11 | Spring Holder | .96 | 51 | BH318-62 | BH318-63 | Handle Assembly | 7.43 |
| 27 | BH022-61 | BH022-61 | Arm Lever Spring | 1.06 | 52 | BH105-11 | BH105-11 | Handle Cap Washer | .47 |
| 28 | BH031-61 | BH031-61 | Spring Shaft | .96 | 53 | BH073-31 | BH073-33 | Handle Screw Cap | 3.23 |
| 29 | BH046-62 | BH046-63 | Arm Lever Cover | 1.06 | 56 | BH016-11 | BH016-11 | Line Roller Bushing | 1.06 |
| 30 | BH085-11 | N/A | Cover Screw | .64 | 57 | BH141-61 | BH141-61 | Pinion Bushing | .95 |
| 30 | N/A | BH085-13 | Cover Screw | .47 | | | | | |

| | | | | | |
|-------------------------|-----------|---|-----------|---------------------|-----|
| MODEL INTRODUCED | Dec. 1997 | EFFECTIVE DATE OF PARTS LIST/DIAGRAM | Dec. 1997 | DISCONTINUED | N/A |
|-------------------------|-----------|---|-----------|---------------------|-----|

Prices subject to change without notice. Prices do not include postage and handling.

PLEASE ORDER BY PART NUMBER Zebco Division Brunswick Corporation, Box 270, Tulsa, OK 74101 USA 918-836-5581

