

QUANTUM

BR170A/BR370A

SPECIFICATIONS:

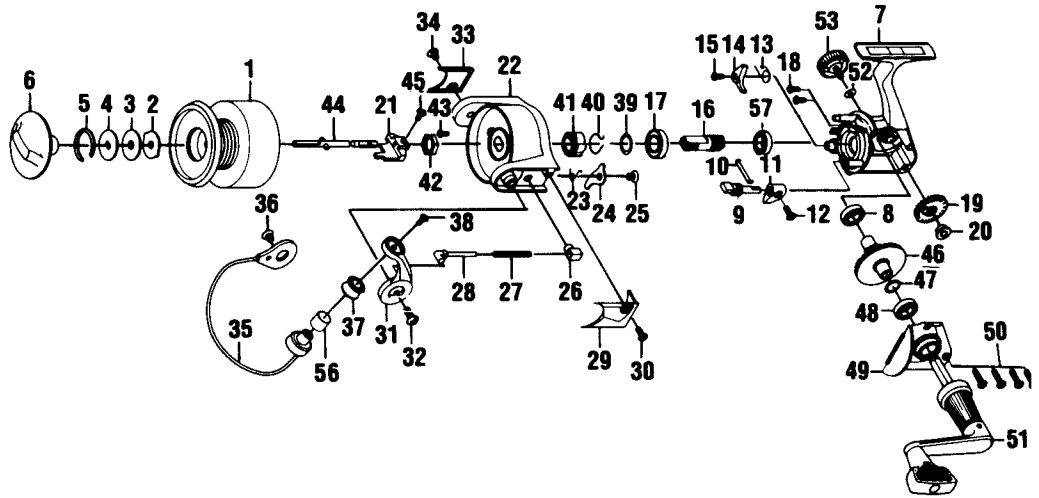
Heavy Saltwater
 260 yds/20 lb Line Capacity
 4.8:1 Gear Ratio
 18.6 oz. Weight

BR170A: 1 Ball Bearing

BR370A: 3 Ball Bearing

FEATURES:

Oversized Front Drag and Center Shaft
 Right/Left Interchangeable Handle
 Magnum Gears
 Selective Anti-Reverse
 Internal Bail Trip
 Oversized "Twist Reducer" Line Roller
 Aluminum Long Stroke
 Color: BR170A - Light Tan
 BR370B - Dark Grey



Key No.	BR170A Part No.	BR370B Part No.	Description	Price	Key No.	BR170A Part No.	BR370B Part No.	Description	Price
1	BH321-62	BH321-63	Spool Assembly	11.89	31	BH007-62	N/A	Arm Lever	1.65
2	BH081-21	BH081-21	Spool Washer "A"	.59	31	N/A	BH007-61	Arm Lever	1.60
3	BH033-21	BH033-21	Spool Washer "B"	.64	32	BH044-11	N/A	Arm Lever Screw	.64
4	BH080-31	BH080-31	Spool Washer "D"	.96	32	N/A	BH044-13	Arm Lever Screw	.42
5	BH038-21	BH038-21	Drag Retainer	1.01	33	BH024-62	BH024-63	Bail Holder Cover	1.03
6	BH332-41	BH332-46	Drag Knob Assembly	3.34	34	BH085-11	N/A	Cover Screw	.64
7	BH001-62	BH001-63	Body	6.90	34	N/A	BH085-13	Cover Screw	.47
8	BH027-71	N/A	Body Bushing	.77	35	BH347-62	BH347-61	Bail Assembly	3.19
8	N/A	BH027-61	Ball Bearing	7.96	36	BH044-11	N/A	Bail Holder Screw	.64
9	BH090-11	BH090-11	Stopper Cam	1.60	36	N/A	BH044-13	Bail Holder Screw	.42
10	BH089-11	BH089-11	Stopper Cam Spring	.96	37	BH004-12	BH004-12	Line Roller	3.19
11	BH059-11	BH059-14	Stopper Lever	1.08	38	BH108-11	N/A	Bail Screw	.64
12	BH135-11	BH135-12	Stopper Lever Screw	.64	38	N/A	BH108-13	Bail Screw	.42
13	BH061-61	BH061-61	Stopper Spring	1.44	39	BH110-61	BH110-61	Bearing Washer	1.28
14	BH063-61	BH063-61	Stopper	1.28	40	BH086-61	BH086-61	Silent Spring	1.65
15	BH077-61	BH077-61	Stopper Screw	.52	41	BH060-61	BH060-61	Ratchet Gear	1.28
16	BH011-61	BH011-61	Pinion Gear	3.34	42	BH006-61	BH006-61	Rotor Nut	1.28
17	BH028-61	BH028-61	Ball Bearing	7.96	43	BH094-11	BH094-11	Rotor Nut Lock Screw	.94
18	BH041-61	BH041-61	Bearing Screw	.54	44	BH315-61	BH315-61	Main Shaft Assembly	3.08
19	BH053-61	BH053-61	O/S Gear	1.65	45	BH100-61	BH100-61	Main Shaft Screw	.54
20	BH158-61	BH158-61	O/S Gear Bushing	.93	46	BH012-71	BH012-71	Driver Gear	3.23
21	BH025-61	BH025-61	O/S Slider	2.17	47	BH026-61	BH026-61	Adjust Washer	1.06
22	BH009-62	BH009-63	Rotor	6.90	48	BH027-71	N/A	Body Cover Bushing	.77
23	BH049-61	BH049-61	Kick Lever Spring	.96	48	N/A	BH027-61	Ball Bearing	7.96
24	BH019-61	BH019-61	Kick Lever	1.65	49	BH023-62	BH023-63	Body Cover	2.76
25	BH136-61	BH136-61	Kick Lever Screw	.64	50	BH057-11	BH057-13	Body Cover Screw	.64
26	BH020-11	BH020-11	Spring Holder	.96	51	BH318-62	BH318-63	Handle Assembly	7.43
27	BH022-61	BH022-61	Arm Lever Spring	1.06	52	BH105-11	BH105-11	Handle Cap Washer	.47
28	BH031-61	BH031-61	Spring Shaft	.96	53	BH073-31	BH073-33	Handle Screw Cap	3.23
29	BH046-62	BH046-63	Arm Lever Cover	1.06	56	BH016-11	BH016-11	Line Roller Bushing	1.06
30	BH085-11	N/A	Cover Screw	.64	57	BH141-61	BH141-61	Pinion Bushing	.95
30	N/A	BH085-13	Cover Screw	.47					

MODEL INTRODUCED	Dec. 1997	EFFECTIVE DATE OF PARTS LIST/DIAGRAM	Dec. 1997	DISCONTINUED	N/A
-------------------------	-----------	---	-----------	---------------------	-----

Prices subject to change without notice. Prices do not include postage and handling.

PLEASE ORDER BY PART NUMBER Zebco Division Brunswick Corporation, Box 270, Tulsa, OK 74101 USA 918-836-5581

