



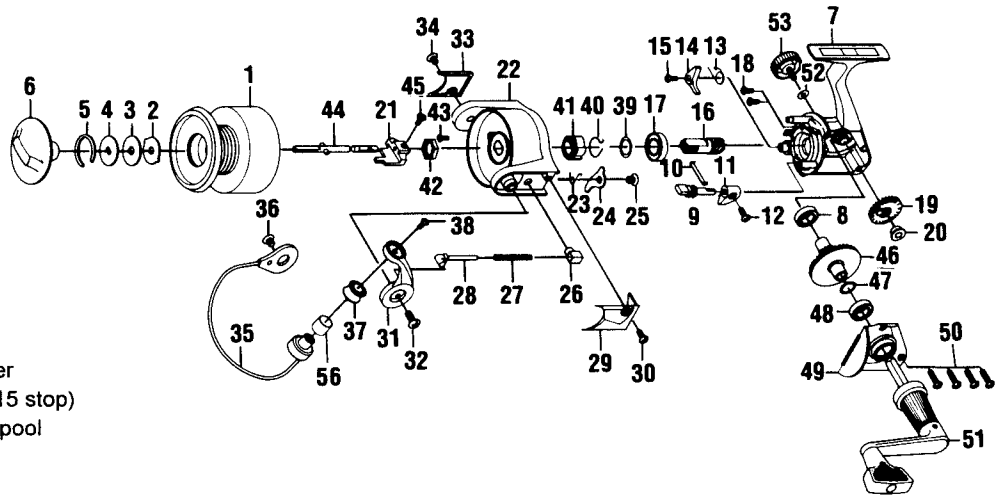
# BR120 / BR320 / BR320A

## SPECIFICATIONS :

M FW / Lt SW  
 200 yds / 6 lb Line Capacity  
 Ball Bearings:  
 BR120 - 1 B.B.  
 BR320 / BR320A - 3 B.B.  
 5.7:1 Gear Ratio  
 10.4 oz.

## FEATURES :

Front Drag  
 Balanced Rotor  
 Oversized Twist Reducer Line Roller  
 POSI-Loc Selective Anti-Reverse (15 stop)  
 Aluminum Long Stroke Max-Cast Spool  
 Color: BR120 / 320 - Light Tan  
 BR320A - Dark Grey



Key No.	Part No.	DESCRIPTION	Price	Key No.	Part No.	DESCRIPTION	Price
1	BH321-11	BH321-12	8.22	29	N/A	BH046-13	1.43
1	N/A	BH321-17	8.22	30	BH085-11	Arm Lever Cover (BR320A)	0.64
2	BH081-11	←	0.59	30	N/A	BH085-13	0.47
3	BH033-11	←	0.64	31	BH007-12	←	3.18
4	BH080-11	←	0.96	31	N/A	BH007-13	2.44
5	BH038-11	←	1.01	32	BH044-11	←	0.64
6	BH332-11	BH332-16	3.29	32	N/A	BH044-13	0.44
6	N/A	BH332-16	3.29	33	BH024-11	←	1.65
7	BH001-11	BH001-12	5.57	33	N/A	BH024-13	0.84
7	BH001-18	BH001-17	5.57	34	BH085-11	←	0.64
7	N/A	BH001-19	5.57	34	N/A	BH085-13	0.47
8	BH027-11	N/A	0.77	35	BH347-12	←	5.73
8	N/A	BH027-12	6.58	35	N/A	BH347-17	5.73
9	BH090-11	←	1.60	36	BH044-11	←	0.64
10	BH089-11	←	0.96	36	N/A	BH044-13	0.42
11	BH059-11	←	1.08	37	BH004-12	←	3.19
11	N/A	BH059-14	1.08	38	BH108-11	←	0.64
12	BH135-11	←	0.64	38	N/A	BH108-13	0.42
12	N/A	BH135-12	0.64	39	BH110-11	←	0.54
13	BH061-11	←	0.46	40	BH086-11	←	1.65
14	BH063-12	←	1.49	41	BH060-12	←	1.75
15	BH077-11	←	0.64	42	BH006-11	←	1.11
16	BH011-13	←	2.76	43	BH094-11	←	0.64
16	BH011-14	←	2.76	44	BH315-11	←	5.73
17	BH028-11	←	8.70	45	BH100-11	←	0.64
17	BH028-12	←	8.70	46	BH012-13	←	2.49
18	BH041-11	←	0.64	47	BH026-11	←	0.69
19	BH053-11	←	1.53	48	BH027-11	N/A	0.77
20	BH158-11	←	0.98	48	N/A	BH027-12	6.58
21	BH025-11	←	2.66	49	BH023-11	BH023-12	3.45
22	BH009-11	←	5.30	49	N/A	BH023-17	3.45
22	N/A	BH009-17	5.30	50	BH057-11	←	0.64
23	BH049-11	←	0.96	50	N/A	BH057-13	0.42
24	BH019-11	←	1.91	51	BH318-11	←	6.37
25	BH136-11	←	0.64	51	N/A	BH318-12	6.37
26	BH020-11	←	0.96	52	BH105-11	←	0.47
27	BH022-11	←	0.64	53	BH073-11	←	2.34
28	BH031-11	←	0.96	53	N/A	BH073-13	2.34
29	BH046-11	←	1.43	56	BH016-11	←	1.06

☐ = These parts are not interchangeable with parts from different date code (ie., use Pinion Gear before A8 along with Ball Bearing and Body before A8)

<b>MODEL</b>	<b>EFFECTIVE DATE OF</b>	<b>DISCONTINUED :</b>
<b>INTRODUCED :</b> 1997	<b>PARTS LIST/DIAGRAM:</b> Sept. '98	<b>N/A</b>

Prices subject to change without notice. Prices do not include postage and handling.

PLEASE ORDER BY PART NUMBER

Zebco, P.O. Box 270, Tulsa, Ok. 74101; 918-831-6965 Phone or 800-FIXREEL (349-7335) FAX

