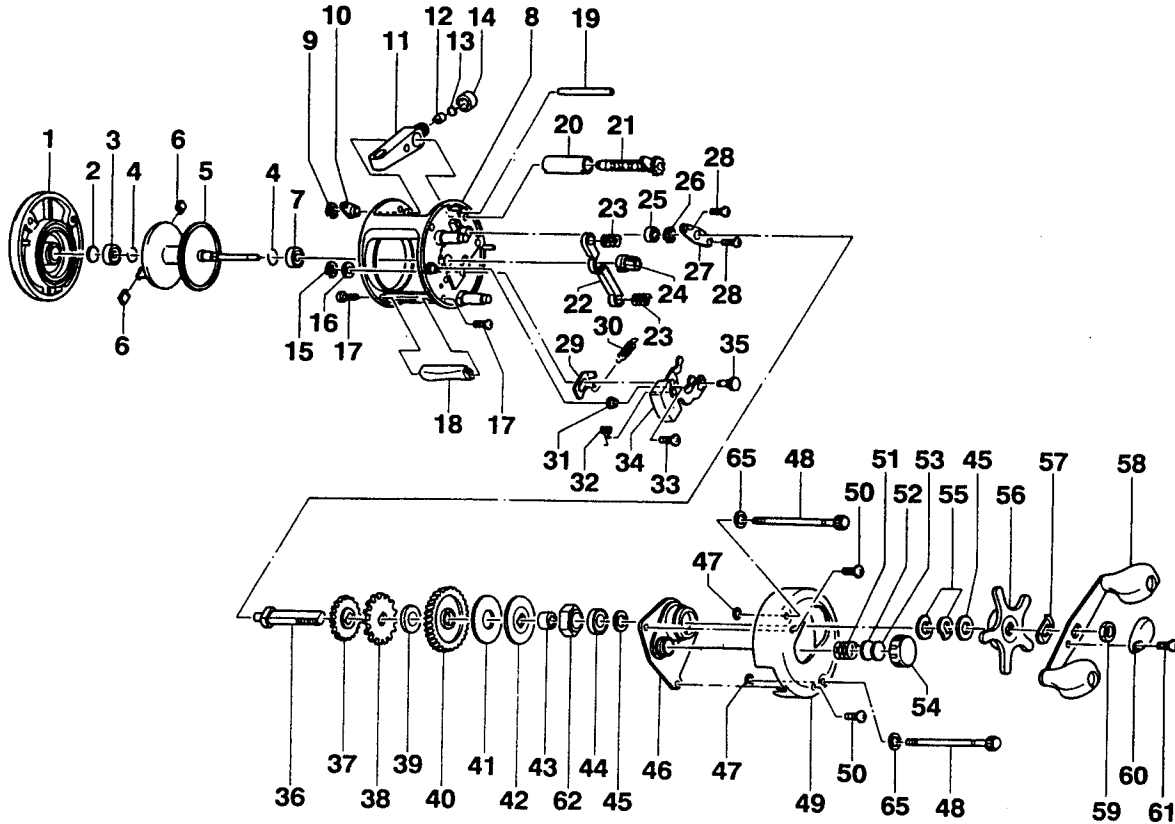


QUANTUM.

BC500



KEY NO.	PART NO.	DESCRIPTION	KEY NO.	PART NO.	DESCRIPTION
1	XX323-04	Left Side Cover Assy	32	JX104-01	Spring - Release Slider
2	XX038-02	Spool Shaft Washer	33	XX050-01	Screw - Release Slider
3	JX106-01	Bearing - Spool Shaft	34	JX339-01	Release Slider Assy
4	JX080-01	Clip Ring	35	JX102-01	Post - Kick Lever Guide
5	JX321-02	Spool Assy	36	JX008-01	Crank Shaft
6	XX044-01	Brake Shoe B	37	JX112-01	O/S Drive Gear
7	JX106-01	Bearing - Spool Shaft	38	JX083-01	Trip Ratchet
8	JX301-06	Frame Assy	39	JX111-01	Washer - Ratchet
9	QW120-01	E-Clip - Worm Shaft	40	JX012-01	Drive Gear
10	JX067-01	Bushing - Worm Shaft	41	JX059-01	Drag Disc
11	JX347-01	Line Guide Carrier Assy	42	JX045-01	Drag "D" Washer
12	JX006-01	Line Guide Pawl	43	CW052-01	Sleeve - One Way Bearing
13	JX035-01	Washer - Line Guide Pawl	44	TW058-01	Bearing - Crank Shaft(U)
14	JX007-01	Screw - Line Guide Carrier	45	JX038-01	Crank Shaft Washer
15	NX092-01	E-Clip - Kick Lever Guide Post	46	JX066-01	Crank Shaft Guide
16	XX035-01	Washer - Kick Lever Guide	47	JX073-01	O-Ring - Thumb Screw
17	JX050-01	Screw - Thumb Rest	48	XX374-01	Thumb Screw Assy
18	JX009-01	Thumb Rest	49	JX024-08	Right Side Cover
19	JX061-01	Line Guide Carrier Guide	50	QW123-05	Right Side Cover Screw
20	JX016-01	Worm Shaft Guide	51	JX105-01	Spring - Tension Knob
21	JX372-01	Worm Shaft Assy	52	QW032-02	Washer - Spool Tension
22	JX025-01	Pinion Yoke	53	JX082-01	Washer - Cushion
23	JX040-01	Yoke Spring	54	XX033-01	Spool Tension Knob
24	JX011-01	Pinion Gear	55	JX046-01	Spring "D" Washer
25	XX017-01	Bearing - Crank Shaft(L)	56	XX355-02	Star Drag Assy
26	QW120-01	E-Clip - Crank Shaft	57	NX054-01	Handle Washer
27	JX002-01	Retainer - Crank Shaft	58	UW318-02	Handle Assy
28	JX107-01	Screw - Crank Shaft Retainer	59	QW003-01	Handle Nut
29	JX077-01	Kick Lever	60	JX034-01	Handle Nut Cap
30	JX097-01	Spring - Kick Lever	61	QW123-05	Handle Nut Cap Screw
31	JX068-01	Bushing - Release Slider Guide	62	UQ063-02	One Way Bearing
			65	JX121-01	Washer - Thumb Screw

Prices subject to change without notice. Prices do not include postage and handling.

PLEASE ORDER BY PART NUMBER

Rev. 8/85

Zebco Division of Brunswick Corporation, Box 270, Tulsa, OK, 74101 USA 918-831-6989



BRUNSWICK