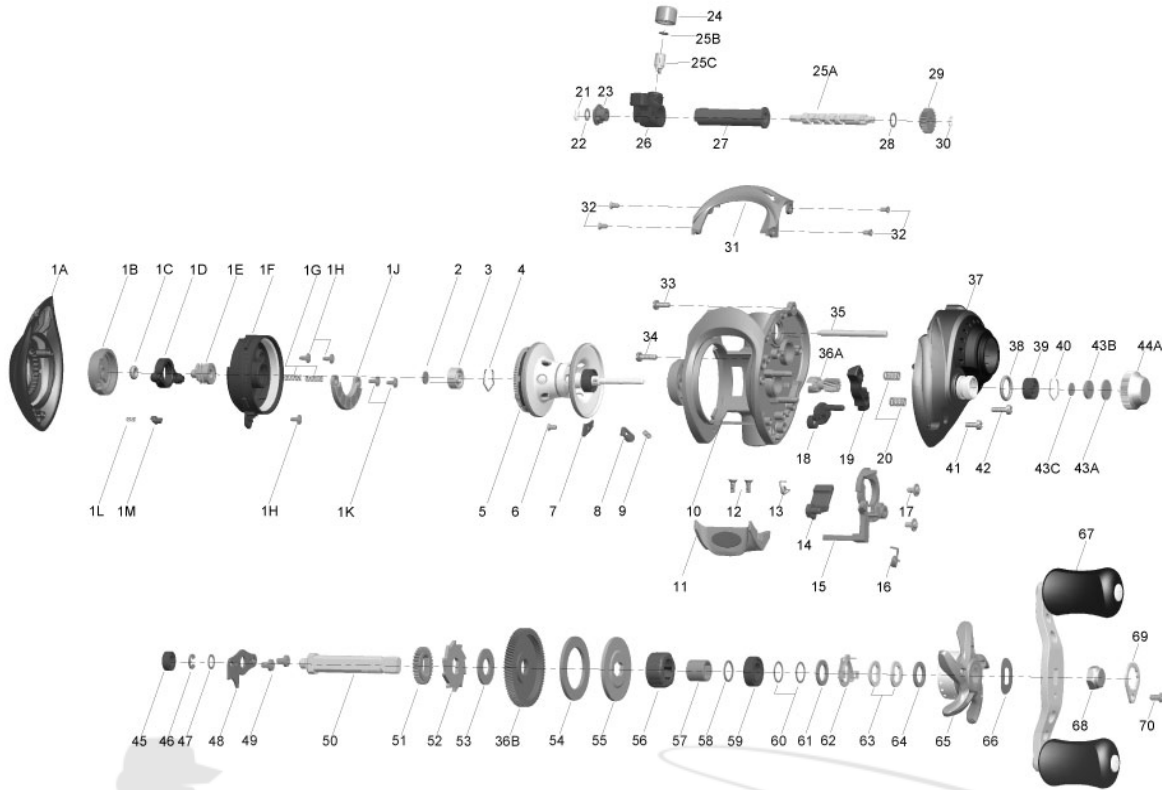


# QUANTUM

## AN100S



Quantum AN100S Bait Cast Reel Part List

Key #	Description	Part No.	Key #	Description	Part No.
1	Palm Side Cover Kit	EB4023-01	31	Front Support	EB099-01
1A	Palm Side Cover Assembly	N/A	32	Front Support Screw	KW107-01
1B	Cast Control Dial	N/A	33	Front Side Cover Screw "B"	KW123-01
1C	Control Dial Friction Ring	N/A	34	Gear Side Cover Screw "B"	KW123-01
1D	Slide Cam "A"	N/A	35	Pillar	KW061-01
1E	Slide Cam "B"	N/A	36	Gear Kit	KW4011-01
1F	Brake Ring Assembly	N/A	36A	Pinion Gear	N/A
1G	Magnet Plate Spring	N/A	36B	Drive Gear	N/A
1H	Brake Ring Assembly Screw	N/A	37	Gear Side Cover Assembly	EB324-02
1J	Magnet Plate Assembly	N/A	38	Spool Tension Knob O-Ring	QW101-01
1K	Magnet Plate Screw	N/A	39	Spool Tension Knob Bearing	SW117-01
1L	Side Cover Locking Pin Spring	N/A	40	Spool Tension Knob Bearing Retainer	EB080-01
1M	Side Cover Locking Pin	N/A	41	Gear Side Cover Screw "A"	BV123-01
2	Spool Shaft Washer (Palm Side)	QW032-04	42	Gear Side Cover Screw "B"	KW123-01
3	Spool Shaft Ball Bearing (Palm Side)	QV017-01	43	Spool Tension Washer Kit	QW4032-01
4	Bearing Clip Ring	HV080-01	43A	Spool Cushion Washer	N/A
2	Spool Shaft Washer (Palm Side)	QW032-04	43B	Spool Tension Collar	N/A
3	Spool Shaft Ball Bearing (Palm Side)	QV017-01	43C	Spool Tension Washer	N/A
4	Bearing Clip Ring	HV080-01	44	Spool Tension Knob Kit	KW4033-02
5	Spool Assembly	EB321-01	44A	Spool Tension Knob	N/A
6	Locking Lever Retainer Screw	KW107-01	43	Spool Tension Washer Kit	QW4032-01
7	Locking Lever Retainer	KW056-01	45	Crank Shaft Bearing (Frame Side)	SW017-01
8	Locking Lever	KW119-01	46	Crank Shaft E-Clip	QW120-01
9	Locking Lever Spring	KW096-01	47	Crank Shaft Shim Washer	EB032-01
10	Frame	N/A	48	Crank Shaft Retainer Plate	KW002-01
11	Thumb Bar Assembly	EB309-01	49	Crank Shaft Retainer Plate Screw	QW125-02
12	Thumb Bar Assembly Screws	EB107-01	50	Crank Shaft	EB008-01
13	Kick Lever Spring	EB097-01	51	Worm Shaft Drive Gear	ZW112-01
14	Kick Lever includes:	EB077-01	52	Trip Ratchet	KW083-01
15	Release Slider	EB039-01	53	Trip Ratchet Washer	QW111-01
16	Release Slider Spring	KW104-01	54	Drag Washer	UX059-01
17	Release Slider Screw	EB125-01	55	Drag Key Washer	KW045-01
18	Flipping Switch	EB087-01	56	One Way Clutch	EX063-01
19	Pinion Yolk	EB025-01	57	One Way Clutch Sleeve	KW052-01
20	Pinion Yolk Spring	KW040-01	58	Bearing Washer	KW032-01
21	Worm Shaft E-Clip (Palm Side)	NX090-01	59	Crank Shaft Bearing (Handle Side)	TW058-02
22	Worm Shaft Washer (Palm Side)	KW038-01	60	Star Drag Washer "A"	KW032-01
23	Worm Shaft Bushing	KW067-01	61	Star Drag Washer "B"	EB035-01
24	Line Guide Pawl Screw	KW007-01	62	Star Drag Clicker Spring Assembly	ZW4114-01
25	Worm Shaft Kit includes:	EB4072-01	63	Star Drag Spring Washer	JX046-01
25A	Worm Shaft	N/A	64	Star Drag Washer "B"	EB035-01
25B	Line Guide Pawl Washer	N/A	65	Star Drag Assembly	EB355-01
25C	Line Guide Pawl	N/A	66	Handle Spring Washer	QW054-01
26	Line Guide Carrier Assembly	EB347-01	67	Handle Assembly	KW318-04
27	Worm Shaft Guide	KW016-01	68	Handle Nut	KW003-02
28	Worm Shaft Washer (Gear Side)	KW035-01	69	Handle Nut Retainer	KW034-04
29	Worm Shaft Pinion Gear	HV085-01	70	Handle Nut Retainer Screw	QW123-01
30	Worm Shaft E-Clip (Gear Side)	NX090-01			