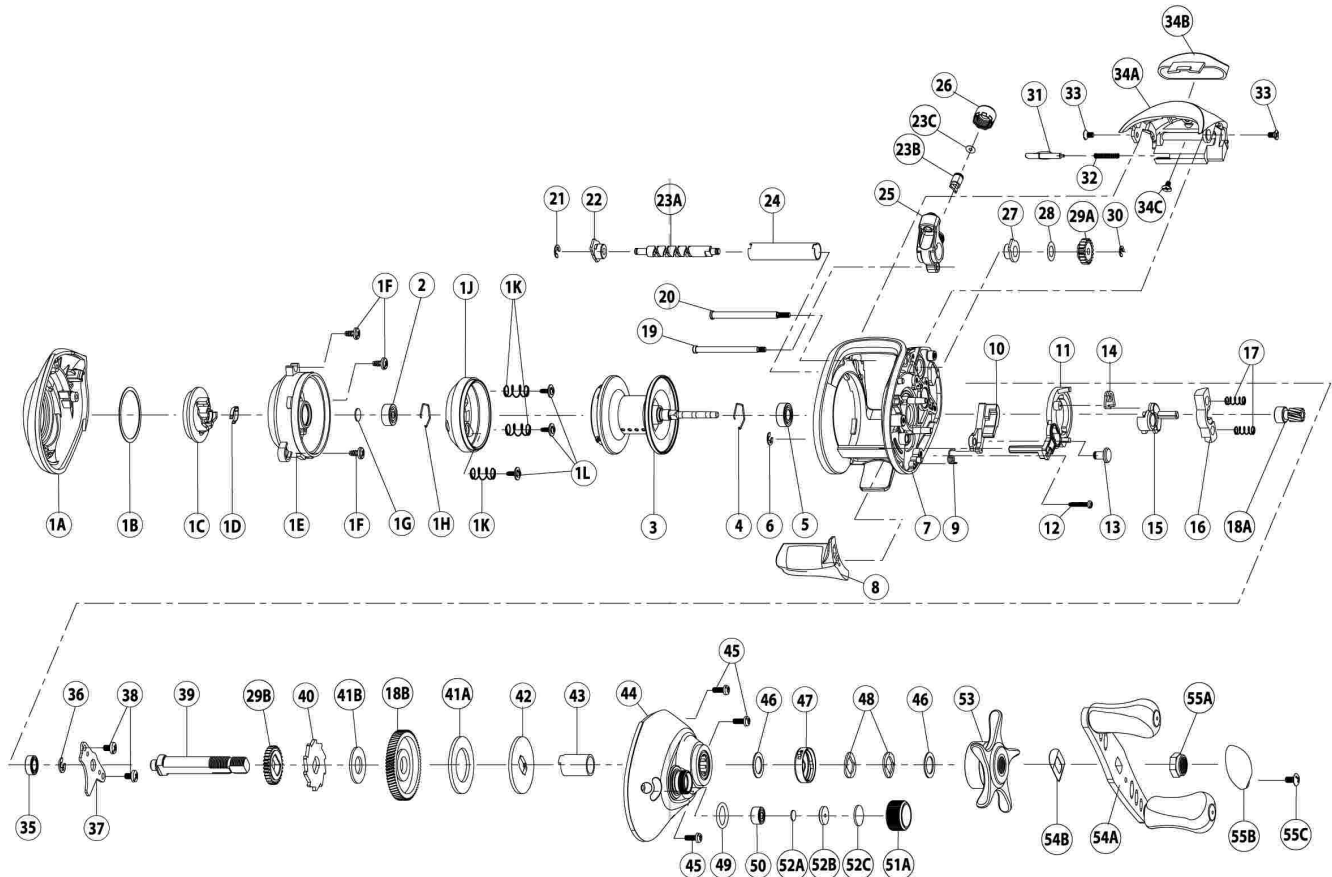


# AC500CX Parts Diagram - Right Hand Model

For Parts and Service  
Call 1-888-404-1119  
www.mikesreelrepair.com



Key#	Description	AC500CXG	AC500CXB	AC500CXR
1	Palm side cover kit includes 1A- Palm side cover assembly 1B- Centrifugal dial washer 1C- Centrifugal dial 1D- Centrifugal dial spring 1E- Spool cover 1F- Spool cover screw 1G- Spool shaft washer 1H- Clip ring 1J- Brake ring assembly 1K- Brake ring slider spring 1L- Spool cover screw 2- Spool shaft bearing (palm)	YX4023-01	YX4023-03	YX4023-04
2	Palm Side Spool Shaft Bearing	QV017-01	QV017-01	QV017-01
3	Spool Assembly	YX321-01	YX321-03	YX321-01
4	Clip Ring	EX080-01	EX080-01	EX080-01
5	Gear Side Spool Shaft Bearing	EX017-02	EX017-02	EX017-02
6	E-Clip	NX092-01	NX092-01	NX092-01
7	Frame	YX001-01	YX001-02	YX001-01
8	ThumbBar	YX009-01	YX009-01	YX009-01
9	Kick Lever Spring	GX097-01	GX097-01	GX097-01
10	Kick Lever	YX077-01	YX077-01	YX077-01
11	Release Slider	YX039-01	YX039-01	YX039-01
12	Thumb Bar Screw	ZW053-01	ZW053-01	ZW053-01
13	Release Slider Guide Pin	YX102-01	YX102-01	YX102-01
14	Release Slider Spring	YX104-01	YX104-01	YX104-01
15	Flippin Lever	YX087-01	YX087-01	YX087-01
16	Pinion Yoke	GX025-01	GX025-01	GX025-01
17	Yoke Spring	GX040-01	GX040-01	GX040-01
18	Gear Kit includes 18A - Pinion Gear Assembly 18B - Drive Gear	YX4011-01	YX4011-01	YX4011-01
19	Stablizer Bar - "B"	SX061-01	SX061-01	SX061-01
20	Stablizer Bar - "A"	YX061-01	YX061-01	YX061-01
21	E-Clip	NX092-01	NX092-01	NX092-01
22	Palm Side Worm Shaft Bushing	GX067-01	GX067-01	GX067-01
23	Worm Shaft Kit Includes 23A - Worm Shaft 23B - Line Guide Pawl 23C - Carrier Washer	HV4072-01	HV4072-01	HV4072-01
24	Worm Shaft Guide	YX016-01	YX016-01	YX016-01
25	Line Guide Carrier	YX047-01	YX047-01	YX047-01
26	Line Guide Carrier Screw	ZW007-02	ZW007-02	ZW007-02
27	Gear Side Worm Shaft Bushing	HV068-01	HV068-01	HV068-01
28	Worm Shaft Washer	EX035-01	EX035-01	EX035-01

Key#	Description	AC500CXG	AC500CXB	AC500CXR
29	O/S Gear Kit includes 29A - O/S Pinion Gear 29B - O/S Drive Gear	GX4085-01	GX4085-01	GX4085-01
30	E-Clip	NX090-01	NX090-01	NX090-01
31	Palm Side Cover Locking Lever	YX119-01	YX119-01	YX119-01
32	Palm Side Cover Locking Spring	ZW096-01	ZW096-01	ZW096-01
33	Hood Screw	HX107-01	HX107-1	HX107-1
34	Hood Kit includes 34A - Hood 34B - Front Support 34C - Front Support Screw	YX4027-01	YX4027-03	YX4027-04
35	Crank Shaft Bearing - Lower	SW017-01	SW017-01	SW017-01
36	E-Clip	QW120-01	QW120-01	QW120-01
37	Crank Shaft Retainer	GX002-01	GX002-01	GX002-01
38	Crank Shaft Retainer Screw	JX107-01	JX107-01	JX107-01
39	Crank Shaft	GX008-01	GX008-01	GX008-01
40	Trip Ratchet	EX083-01	EX083-01	EX083-01
41	Drag Disc Kit includes 41A - Drag Disc 41B - Trip Ratchet Washer	HV4059-01	HV4059-01	HV4059-01
42	Drag Key Washer	GX045-01	GX045-01	GX045-01
43	One Way Bearing Sleeve	GX052-01	GX052-01	GX052-01
44	Gear Side Cover Assembly	YX324-01	YX324-03	YX324-04
45	Gear Side Cover Screw	BV123-01	BV123-01	BV123-01
46	Star Drag Washer	ZW032-01	ZW032-01	ZW032-01
47	Drag Click Spring Assembly	YX4114-01	YX4114-01	YX4114-01
48	Spring "D" Washer	JX046-01	JX046-01	JX046-01
49	Tension Knob O-Ring	QW101-01	QW101-01	QW101-01
50	Tension Knob Bearing	SW117-01	SW117-01	SW117-01
51	Tension Knob Kit includes 51A - Spool Tension Knob 52 - Spool Tension Washer Kit	HV4033-01	HV4033-01	HV4033-01
52	Spool Tension Washer Kit Includes 52A - Spool Tension Washer 52B - Spool Tension Collar 52C - Spool Cushion Washer	QW4032-01	QW4032-01	QW4032-01
53	Star Drag Assembly	YX355-01	YX355-01	YX355-01
54	Handle Kit includes 54A - Handle Assembly 54B - Handle Washer	CX4018-01	CX4018-01	CX4018-01
55	Handle Nut Kit includes 55A - Handle Nut 55B - Handle Nut Cap 55C - Handle Nut Cap Screw 55D - Indicator	RV4003-02	RV4003-01	RV4003-02