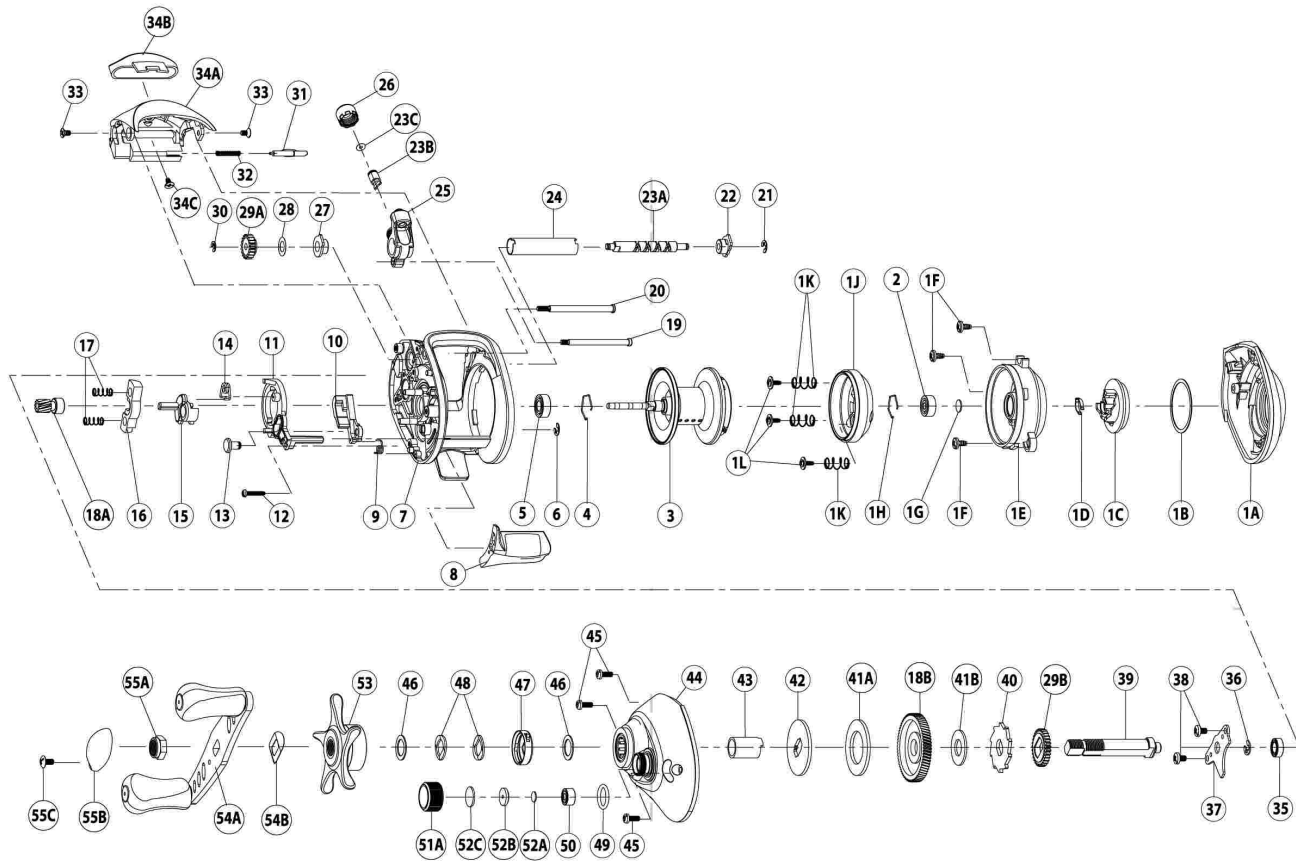


# AC501CX Parts Diagram - Left Hand Model

For Parts and Service  
 Call 1-888-404-1119  
 www.mikesreelrepair.com



Key#	Description	AC500CXG	AC500CXB	AC500CXR
1	Palm side cover kit includes	TX4023-01	TX4023-03	TX4023-04
	1A- Palm side cover assembly			
	1B- Centrifugal dial washer			
	1C- Centrifugal dial			
	1D- Centrifugal dial spring			
	1E- Spool cover			
	1F- Spool cover screw			
	1G- Spool shaft washer			
	1H- Clip ring			
	1J- Brake ring assembly			
	1K- Brake ring slider spring			
	1L- Spool cover screw			
	2- Spool shaft bearing (palm)			
2	Palm Side Spool Shaft Bearing	QV017-01	QV017-01	QV017-01
3	Spool Assembly	YX321-02	YX321-04	YX321-02
4	Clip Ring	EX080-01	EX080-01	EX080-01
5	Gear Side Spool Shaft Bearing	EX017-02	EX017-02	EX017-02
6	E-Clip	NX092-01	NX092-01	NX092-01
7	Frame	TX001-01	TX001-02	TX001-01
8	ThumbBar	TX009-01	TX009-01	TX009-01
9	Kick Lever Spring	MX097-01	MX097-01	MX097-01
10	Kick Lever	TX077-01	TX077-01	TX077-01
11	Release Slider	TX039-01	TX039-01	TX039-01
12	Thumb Bar Screw	ZW053-01	ZW053-01	ZW053-01
13	Release Slider Guide Pin	YX102-01	YX102-01	YX102-01
14	Release Slider Spring	TX104-01	TX104-01	TX104-01
15	Flippin Lever	TX087-01	TX087-01	TX087-01
16	Pinion Yoke	MX025-01	MX025-01	MX025-01
17	Yoke Spring	GX040-01	GX040-01	GX040-01
18	Gear Kit includes	YX4011-02	YX4011-02	YX4011-02
	18A - Pinion Gear Assembly			
	18B - Drive Gear			
19	Stabilizer Bar - "B"	SX061-01	SX061-01	SX061-01
20	Stabilizer Bar - "A"	YX061-01	YX061-01	YX061-01
21	E-Clip	NX092-01	NX092-01	NX092-01
22	Palm Side Worm Shaft Bushing	MX067-01	MX067-01	MX067-01
23	Worm Shaft Kit Includes	HV4072-01	HV4072-01	HV4072-01
	23A - Worm Shaft			
	23B - Line Guide Pawl			
	23C - Carrier Washer			
24	Worm Shaft Guide	YX016-01	YX016-01	YX016-01
25	Line Guide Carrier	YX047-01	YX047-01	YX047-01
26	Line Guide Carrier Screw	ZW007-02	ZW007-02	ZW007-02
27	Gear Side Worm Shaft Bushing	HV068-01	HV068-01	HV068-01
28	Worm Shaft Washer	EX035-01	EX035-01	EX035-01

Key#	Description	AC500CXG	AC500CXB	AC500CXR
29	O/S Gear Kit includes	GX4085-01	GX4085-01	GX4085-01
	29A - O/S Pinion Gear			
	29B - O/S Drive Gear			
30	E-Clip	NX090-01	NX090-01	NX090-01
31	Palm Side Cover Locking Lever	TX119-01	TX119-01	TX119-01
32	Palm Side Cover Locking Spring	ZW096-01	ZW096-01	ZW096-01
33	Hood Screw	HX107-01	HX107-1	HX107-1
34	Hood Kit includes	YX4027-01	YX4027-03	YX4027-04
	34A - Hood			
	34B - Front Support			
	34C - Front Support Screw			
35	Crank Shaft Bearing - Lower	SW017-01	SW017-01	SW017-01
36	E-Clip	QW120-01	QW120-01	QW120-01
37	Crank Shaft Retainer	GX002-01	GX002-01	GX002-01
38	Crank Shaft Retainer Screw	JX107-01	JX107-01	JX107-01
39	Crank Shaft	GX008-02	GX008-02	GX008-02
40	Trip Ratchet	EX083-01	EX083-01	EX083-01
41	Drag Disc Kit includes	HV4059-01	HV4059-01	HV4059-01
	41A - Drag Disc			
	41B - Trip Ratchet Washer			
42	Drag Key Washer	GX045-01	GX045-01	GX045-01
43	One Way Bearing Sleeve	GX052-01	GX052-01	GX052-01
44	Gear Side Cover Assembly	TX324-01	TX324-03	TX324-04
45	Gear Side Cover Screw	BV123-01	BV123-01	BV123-01
46	Star Drag Washer	ZW032-01	ZW032-01	ZW032-01
47	Drag Click Spring Assembly	YX4114-01	YX4114-01	YX4114-01
48	Spring "D" Washer	JX046-01	JX046-01	JX046-01
49	Tension Knob O-Ring	QW101-01	QW101-01	QW101-01
50	Tension Knob Bearing	SW117-01	SW117-01	SW117-01
51	Tension Knob Kit includes	HV4033-01	HV4033-01	HV4033-01
	51A - Spool Tension Knob			
	52 - Spool Tension Washer Kit			
52	Spool Tension Washer Kit Includes	QW4032-01	QW4032-01	QW4032-01
	52A - Spool Tension Washer			
	52B - Spool Tension Collar			
	52C - Spool Cushion Washer			
53	Star Drag Assembly	YX355-02	YX355-02	YX355-02
54	Handle Kit includes	CX4018-02	CX4018-02	CX4018-02
	54A - Handle Assembly			
	54B - Handle Washer			
55	Handle Nut Kit includes	RV4003-04	RV4003-03	RV4003-04
	55A - Handle Nut			
	55B - Handle Nut Cap			
	55C - Handle Nut Cap Screw			
	55D - Indicator			