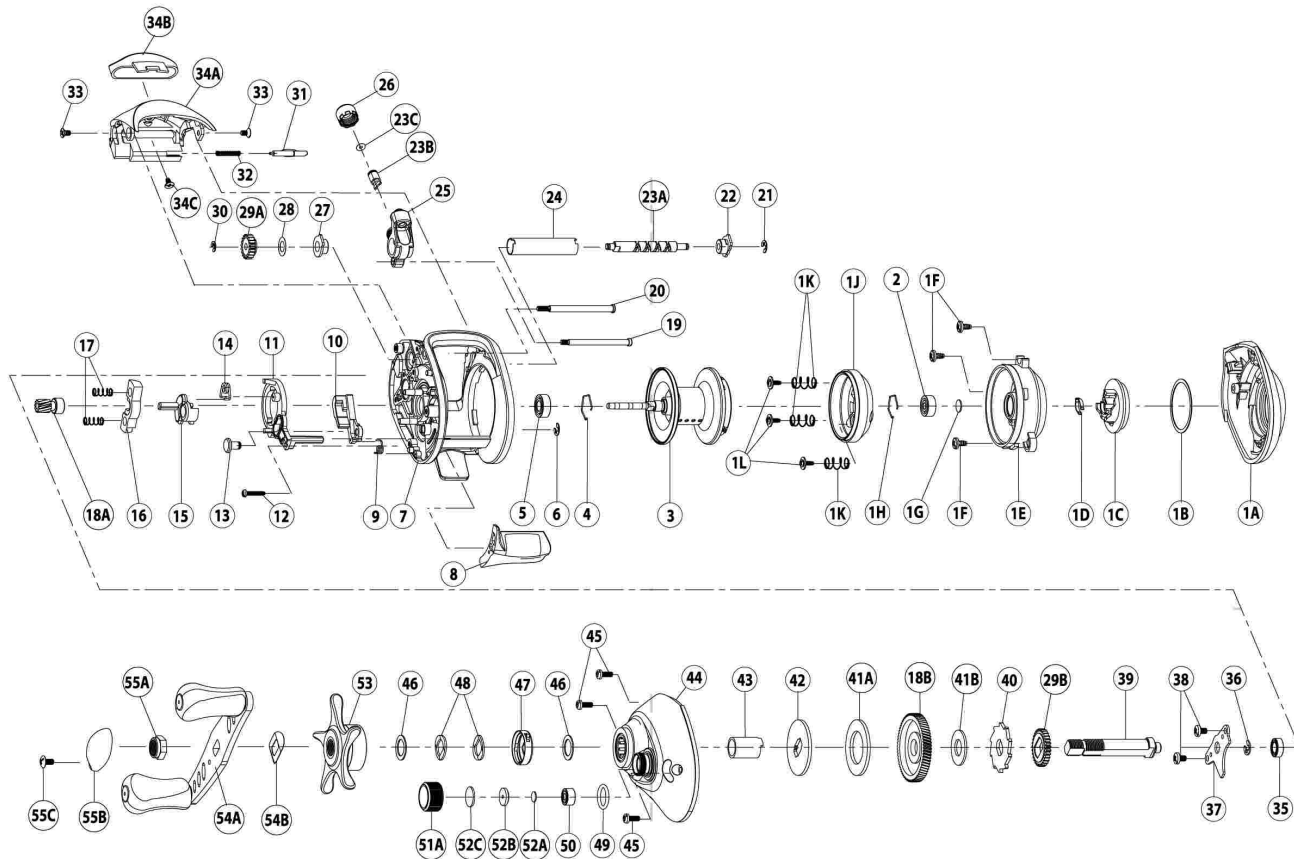


AC501CX Parts Diagram - Left Hand Model

For Parts and Service
 Call 1-888-404-1119
 www.mikesreelrepair.com



| Key# | Description | AC500CXG | AC500CXB | AC500CXR |
|------|-------------------------------|-----------|-----------|-----------|
| 1 | Palm side cover kit includes | TX4023-01 | TX4023-03 | TX4023-04 |
| | 1A- Palm side cover assembly | | | |
| | 1B- Centrifugal dial washer | | | |
| | 1C- Centrifugal dial | | | |
| | 1D- Centrifugal dial spring | | | |
| | 1E- Spool cover | | | |
| | 1F- Spool cover screw | | | |
| | 1G- Spool shaft washer | | | |
| | 1H- Clip ring | | | |
| | 1J- Brake ring assembly | | | |
| | 1K- Brake ring slider spring | | | |
| | 1L- Spool cover screw | | | |
| | 2- Spool shaft bearing (palm) | | | |
| 2 | Palm Side Spool Shaft Bearing | QV017-01 | QV017-01 | QV017-01 |
| 3 | Spool Assembly | YX321-02 | YX321-04 | YX321-02 |
| 4 | Clip Ring | EX080-01 | EX080-01 | EX080-01 |
| 5 | Gear Side Spool Shaft Bearing | EX017-02 | EX017-02 | EX017-02 |
| 6 | E-Clip | NX092-01 | NX092-01 | NX092-01 |
| 7 | Frame | TX001-01 | TX001-02 | TX001-01 |
| 8 | ThumbBar | TX009-01 | TX009-01 | TX009-01 |
| 9 | Kick Lever Spring | MX097-01 | MX097-01 | MX097-01 |
| 10 | Kick Lever | TX077-01 | TX077-01 | TX077-01 |
| 11 | Release Slider | TX039-01 | TX039-01 | TX039-01 |
| 12 | Thumb Bar Screw | ZW053-01 | ZW053-01 | ZW053-01 |
| 13 | Release Slider Guide Pin | YX102-01 | YX102-01 | YX102-01 |
| 14 | Release Slider Spring | TX104-01 | TX104-01 | TX104-01 |
| 15 | Flippin Lever | TX087-01 | TX087-01 | TX087-01 |
| 16 | Pinion Yoke | MX025-01 | MX025-01 | MX025-01 |
| 17 | Yoke Spring | GX040-01 | GX040-01 | GX040-01 |
| 18 | Gear Kit includes | YX4011-02 | YX4011-02 | YX4011-02 |
| | 18A - Pinion Gear Assembly | | | |
| | 18B - Drive Gear | | | |
| 19 | Stabilizer Bar - "B" | SX061-01 | SX061-01 | SX061-01 |
| 20 | Stabilizer Bar - "A" | YX061-01 | YX061-01 | YX061-01 |
| 21 | E-Clip | NX092-01 | NX092-01 | NX092-01 |
| 22 | Palm Side Worm Shaft Bushing | MX067-01 | MX067-01 | MX067-01 |
| 23 | Worm Shaft Kit Includes | HV4072-01 | HV4072-01 | HV4072-01 |
| | 23A - Worm Shaft | | | |
| | 23B - Line Guide Pawl | | | |
| | 23C - Carrier Washer | | | |
| 24 | Worm Shaft Guide | YX016-01 | YX016-01 | YX016-01 |
| 25 | Line Guide Carrier | YX047-01 | YX047-01 | YX047-01 |
| 26 | Line Guide Carrier Screw | ZW007-02 | ZW007-02 | ZW007-02 |
| 27 | Gear Side Worm Shaft Bushing | HV068-01 | HV068-01 | HV068-01 |
| 28 | Worm Shaft Washer | EX035-01 | EX035-01 | EX035-01 |

| Key# | Description | AC500CXG | AC500CXB | AC500CXR |
|------|-----------------------------------|-----------|-----------|-----------|
| 29 | O/S Gear Kit includes | GX4085-01 | GX4085-01 | GX4085-01 |
| | 29A - O/S Pinion Gear | | | |
| | 29B - O/S Drive Gear | | | |
| 30 | E-Clip | NX090-01 | NX090-01 | NX090-01 |
| 31 | Palm Side Cover Locking Lever | TX119-01 | TX119-01 | TX119-01 |
| 32 | Palm Side Cover Locking Spring | ZW096-01 | ZW096-01 | ZW096-01 |
| 33 | Hood Screw | HX107-01 | HX107-1 | HX107-1 |
| 34 | Hood Kit includes | YX4027-01 | YX4027-03 | YX4027-04 |
| | 34A - Hood | | | |
| | 34B - Front Support | | | |
| | 34C - Front Support Screw | | | |
| 35 | Crank Shaft Bearing - Lower | SW017-01 | SW017-01 | SW017-01 |
| 36 | E-Clip | QW120-01 | QW120-01 | QW120-01 |
| 37 | Crank Shaft Retainer | GX002-01 | GX002-01 | GX002-01 |
| 38 | Crank Shaft Retainer Screw | JX107-01 | JX107-01 | JX107-01 |
| 39 | Crank Shaft | GX008-02 | GX008-02 | GX008-02 |
| 40 | Trip Ratchet | EX083-01 | EX083-01 | EX083-01 |
| 41 | Drag Disc Kit includes | HV4059-01 | HV4059-01 | HV4059-01 |
| | 41A - Drag Disc | | | |
| | 41B - Trip Ratchet Washer | | | |
| 42 | Drag Key Washer | GX045-01 | GX045-01 | GX045-01 |
| 43 | One Way Bearing Sleeve | GX052-01 | GX052-01 | GX052-01 |
| 44 | Gear Side Cover Assembly | TX324-01 | TX324-03 | TX324-04 |
| 45 | Gear Side Cover Screw | BV123-01 | BV123-01 | BV123-01 |
| 46 | Star Drag Washer | ZW032-01 | ZW032-01 | ZW032-01 |
| 47 | Drag Click Spring Assembly | YX4114-01 | YX4114-01 | YX4114-01 |
| 48 | Spring "D" Washer | JX046-01 | JX046-01 | JX046-01 |
| 49 | Tension Knob O-Ring | QW101-01 | QW101-01 | QW101-01 |
| 50 | Tension Knob Bearing | SW117-01 | SW117-01 | SW117-01 |
| 51 | Tension Knob Kit includes | HV4033-01 | HV4033-01 | HV4033-01 |
| | 51A - Spool Tension Knob | | | |
| | 52 - Spool Tension Washer Kit | | | |
| 52 | Spool Tension Washer Kit Includes | QW4032-01 | QW4032-01 | QW4032-01 |
| | 52A - Spool Tension Washer | | | |
| | 52B - Spool Tension Collar | | | |
| | 52C - Spool Cushion Washer | | | |
| 53 | Star Drag Assembly | YX355-02 | YX355-02 | YX355-02 |
| 54 | Handle Kit includes | CX4018-02 | CX4018-02 | CX4018-02 |
| | 54A - Handle Assembly | | | |
| | 54B - Handle Washer | | | |
| 55 | Handle Nut Kit includes | RV4003-04 | RV4003-03 | RV4003-04 |
| | 55A - Handle Nut | | | |
| | 55B - Handle Nut Cap | | | |
| | 55C - Handle Nut Cap Screw | | | |
| | 55D - Indicator | | | |