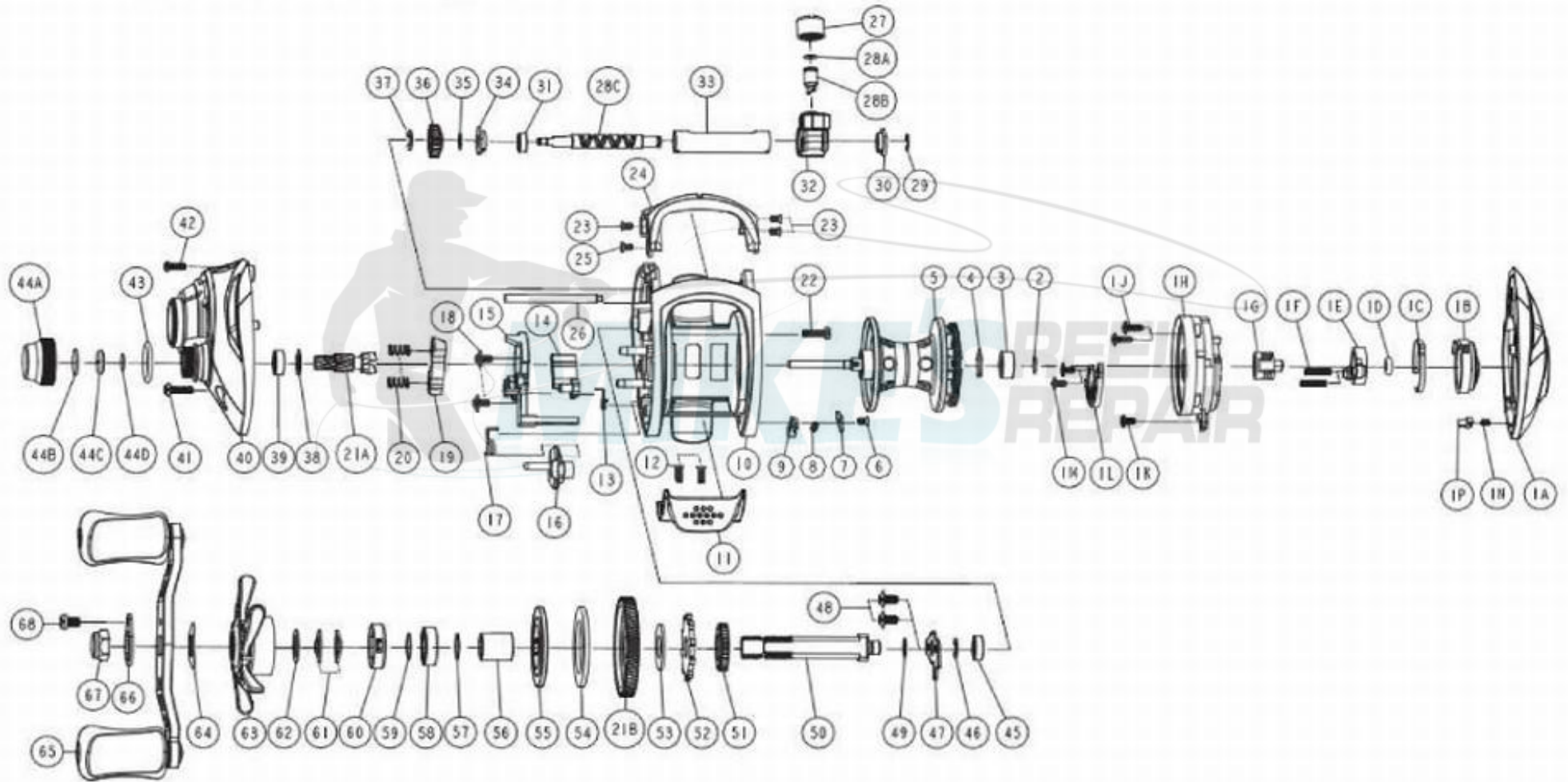


QUANTUM[®]

AC101HPTA



QUANTUM[®]

AC101HPTA

Quantum AC101HPTA Baitcast Reel Part List

| Key # | Description | Part No. | Qty. | Key # | Description | Part No. | Qty. |
|-------|-------------------------------------|-----------|------|-------|--|-----------|------|
| 1 | Palm Side Cover Kit | UA4023-01 | 1 | 29 | Worm Shaft E-Clip | NX092-01 | 1 |
| 1A | Palm Side Cover Assembly | UA323-01 | 1 | 30 | Worm Shaft Bushing | PA067-01 | 1 |
| 1B | Casting Control Dial | PA026-03 | 1 | 31 | Worm Shaft Ball Bearing | PA017-01 | 1 |
| 1C | Control Dial Clicker Spring | MW108-01 | 1 | 32 | Line Guide Carrier Assembly | EB347-03 | 1 |
| 1D | Control Dial Friction Ring | NX105-01 | 1 | 33 | Worm Shaft Guide | PA016-01 | 1 |
| 1E | Slide Cam "A" | EB028-01 | 1 | 34 | Worm Shaft Bushing | RA067-01 | 1 |
| 1F | Magnet Plate Spring | EB071-01 | 2 | 35 | Worm Shaft Washer(Gear Side) | PA035-01 | 1 |
| 1G | Slide Cam "B" | NX028-01 | 1 | 36 | Worm Shaft Pinion Gear | PA085-01 | 1 |
| 1H | Spool Cover Assembly | SA351-01 | 1 | 37 | Worm Shaft E-Clip | NX090-01 | 1 |
| 1J | Spool Cover Screw "A" | PA076-01 | 2 | 38 | Spool Tension Knob Bearing Retainer | EB080-01 | 1 |
| 1K | Spool Cover Screw "B" | EB125-01 | 1 | 39 | Spool Tension Knob Ball Bearing | SW017-01 | 1 |
| 1L | Magnet Plate Assembly | EB330-01 | 1 | 40 | Gear Side Cover Assembly | UA324-01 | 1 |
| 1M | Screw | EB125-01 | 2 | 41 | Gear Side Cover Screw "A" | KW123-02 | 1 |
| 1N | Side Cover Locking Pin Spring | KW070-01 | 1 | 42 | Gear Side Cover Screw "B" | PA123-01 | 1 |
| 1P | Side Cover Locking Pin | LW103-01 | 1 | 43 | Spool Tension Knob O-Ring | RA101-01 | 1 |
| 2 | Spool Shaft Washer(Palm Side) | QW032-04 | 1 | 44 | Spool Tension Knob Kit | PA4033-03 | 1 |
| 3 | Spool Shaft Ball Bearing(Palm Side) | QV017-01 | 1 | 44A | Spool Tension Knob | RA033-01 | 1 |
| 4 | Bearing Retainer Ring | HV080-01 | 1 | 44B | Spool Cushion Washer | QW082-01 | 1 |
| 5 | Spool Assembly | FB321-07 | 1 | 44C | Spool Tension Knob Collar | QW081-01 | 1 |
| 6 | Locking Lever Retainer Screw | KW107-01 | 1 | 44D | Spool Tension Knob Washer | QW032-04 | 1 |
| 7 | Locking Lever Retainer | LW056-01 | 1 | 45 | Crank Shaft Ball Bearing | SW017-01 | 1 |
| 8 | Locking Lever Spring | KW096-01 | 1 | 46 | Crank Shaft E-Clip | QW120-01 | 1 |
| 9 | Locking Lever | LW119-03 | 1 | 47 | Crank Shaft Retainer Plate | KW002-01 | 1 |
| 10 | Frame | UA001-01 | 1 | 48 | Crank Shaft Retainer Plate Screw | QW125-02 | 2 |
| 11 | Thumb Bar | PA009-03 | 1 | 49 | Adjustment Washer | EB032-01 | 1 |
| 12 | Thumb Bar Screw | EB107-01 | 2 | 50 | Crank Shaft | FB008-01 | 1 |
| 13 | Kick Lever Spring | FB097-01 | 1 | 51 | Worm Shaft Drive Gear | ZW112-01 | 1 |
| 14 | Kick Lever | FB077-01 | 1 | 52 | Trip Ratchet | PA083-01 | 1 |
| 15 | Release Slider | FB039-01 | 1 | 53 | Trip Ratchet Washer | PA111-01 | 1 |
| 16 | Flipping Switch | FB087-05 | 1 | 54 | Drag Washer | UX059-01 | 1 |
| 17 | Release Slider Spring | LW104-01 | 1 | 55 | Drag Key Washer | PA045-01 | 1 |
| 18 | Release Slider Screw | EB125-01 | 2 | 56 | One Way Clutch Sleeve | PA052-01 | 1 |
| 19 | Pinion Yoke | FB028-01 | 1 | 57 | Bearing Washer | KW032-01 | 1 |
| 20 | Pinion Yoke Spring | KW040-01 | 2 | 58 | Crank Shaft Ball Bearing (Handle Side) | TW058-02 | 1 |
| 21 | Gear Kit | TA4011-01 | 1 | 59 | Star Drag Washer "A" | KW032-01 | 1 |
| 21A | Pinion Gear | TA011-01 | 1 | 60 | Star Drag Clicker Spring Assembly | PA4114-01 | 1 |
| 21B | Drive Gear | TA012-01 | 1 | 61 | Star Drag Spring Washer | JX046-01 | 2 |
| 22 | Gear Side Cover Screw "A" | KW123-02 | 1 | 62 | Star Drag Washer "B" | PA032-01 | 1 |
| 23 | Front Support Screw "A" | KW107-01 | 3 | 63 | Star Drag | UA324-01 | 1 |
| 24 | Front Support | UA099-01 | 1 | 64 | Handle Spring Washer | QW054-01 | 1 |
| 25 | Front Support Screw "B" | PA107-01 | 1 | 65 | Handle Assembly | RA318-01 | 1 |
| 26 | Pillar | KW061-01 | 1 | 66 | Handle Nut | TA003-01 | 1 |
| 27 | Line Guide Pawl Screw | KW007-01 | 1 | 67 | Handle Nut Retainer | KW034-05 | 1 |
| 28 | Worm Shaft Kit | PA4072-01 | 1 | 68 | Handle Nut Retainer Screw | QW123-02 | 1 |
| 28A | Line Guide Pawl Washer | BV035-01 | 1 | | | | |
| 28B | Line Guide Pawl | KW006-01 | 1 | | | | |
| 28C | Worm Shaft | PA072-01 | 1 | | | | |