

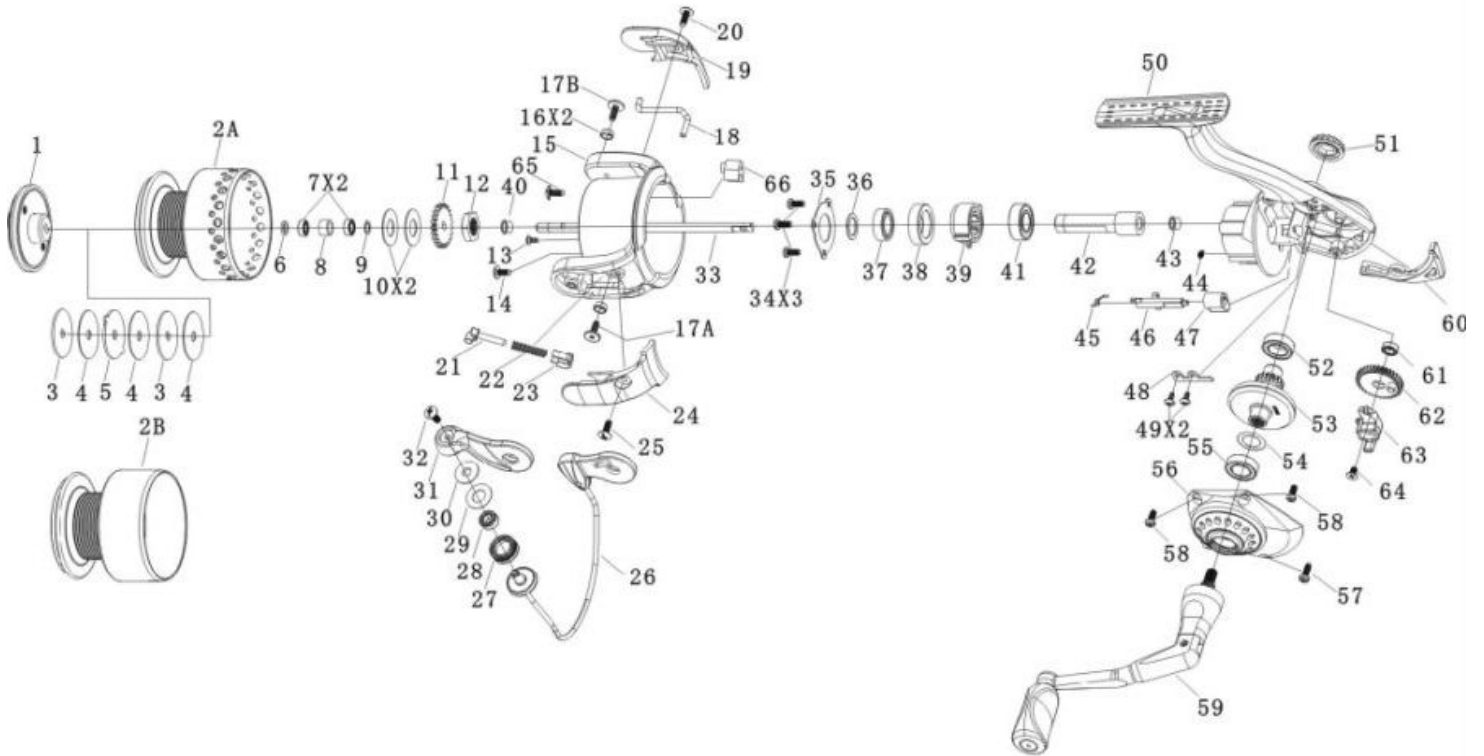
QUANTUM

Array AR40F

For parts and service

call toll free: 1-888-404-1119

www.mikesreelrepair.com



Quantum Array AR40F Part List

| Key No. | Description | ARr0F | Key No. | Description | AR40F |
|---------|-------------------------|-----------|---------|---------------------------|-----------|
| 1 | DRAG KNOB ASSEMBLY | SP332-02 | 33 | MAIN SHAFT | SP015-01 |
| 2A | SPOOL ASSEMBLY | SP321-52 | 34 | STACK RETAINER SCREW | SP057-02 |
| 2B | SPARE SPOOL ASSEMBLY | SP321-53 | 35 | CLUTCH STACK RETAINER | SP040-51 |
| 3 | DRAG WASHER "A" | RQ081-01 | 36 | ROTOR WASHER | SP110-01 |
| 4 | DRAG WASHER "B" | RQ033-01 | 37 | CLUTCH BEARING | SP028-01 |
| 5 | DRAG WASHER "C" | RQ080-01 | 38 | CLUTCH BEARING ADAPTER | SP190-01 |
| 6 | SPOOL CLICKER RETAINER | SP056-01 | 39 | CLUTCH ASSEMBLY | SP063-01 |
| 7 | SPOOL BEARING | N/A | 40 | MAIN SHAFT BUSHING | SP213-01 |
| 8 | SPOOL SLEEVE | SP121-51 | 41 | PINION BALL BEARING | UK028-01 |
| 9 | SPOOL BEARING WASHER | PT120-01 | 42 | PINION GEAR | SP011-01 |
| 10 | SPOOL ADJUST WASHER | PT030-02 | 43 | PINION BUSHING | SP141-01 |
| 11 | CLICK GEAR | RQ037-01 | 44 | CLUTCH SPRING | SP216-01 |
| 12 | ROTOR NUT | SP006-01 | 45 | STOPPER CAM SPRING | SP089-01 |
| 13 | ROTOR NUT LOCK SCREW | SP094-01 | 46 | STOPPER CAM | SP090-01 |
| 14 | COUNTER WEIGHT SCREW | GU077-01A | 47 | STOPPER LEVER | SP059-01 |
| 15 | ROTOR | SP009-52 | 48 | O/S SLIDER GUIDE | SP078-01 |
| 16 | BAIL PIVOT BUSHING | SP109-01 | 49 | SLIDER GUIDE SCREW | RK094-01 |
| 17A | BAIL PIVOT SCREW "A" | SP164-01 | 50 | BODY | SP301-52 |
| 17B | BAIL PIVOT SCREW "B" | SP164-01 | 51 | HANDLE SCREW CAP ASSEMBLY | SP249-01 |
| 18 | KICK LEVER | SP019-01 | 52 | BODY BALL BEARING | BL157-01 |
| 19 | BAIL HOLDER SIDE COVER | SP024-02 | 53 | DRIVE GEAR | SQ012-01 |
| 20 | BAIL HOLDER COVER SCREW | GU077-02 | 54 | D.GEAR ADJUST WASHER | GU105-08 |
| 21 | BAIL SPRING SHAFT | SP031-01 | 55 | BODY COVER BALL BEARING | BL157-01 |
| 22 | BAIL SPRING | NO022-01 | 56 | BODY COVER | SP123-02 |
| 23 | TRIP PIVOT | SP113-01 | 57 | BODY COVER SCREW "A" | SP057-02 |
| 24 | ARM LEVER COVER | SP087-02 | 58 | BODY COVER SCREW "B" | SP057-01 |
| 25 | A/L COVER SCREW | GU077-02 | 59 | HANDLE ASSY | SP318-01 |
| 26 | BAIL ASSEMBLY | SP347-52 | 60 | BODY REAR COVER | SP142-52 |
| 27 | LINE ROLLER | CH004-01 | 61 | O/S GEAR BALL BEARING | EH158-01 |
| 28 | LINE ROLLER BEARING | GH202-01 | 62 | O/S GEAR | TQ053-51 |
| 29 | LINE ROLLER SLEEVE | DH102-01 | 63 | O/S SLIDER | SP025-01 |
| 30 | LINE ROLLER BUSHING | CH102-01 | 64 | MAIN SHAFT SCREW | RQ100-01 |
| 31 | ARM LEVER | SP007-02 | 65 | COUNTER WEIGHT SCREW | GU077-01A |
| 32 | LINE ROLLER SCREW | AQ108-C | 66 | ROTOR COUNTER WEIGHT | SP148-51 |