

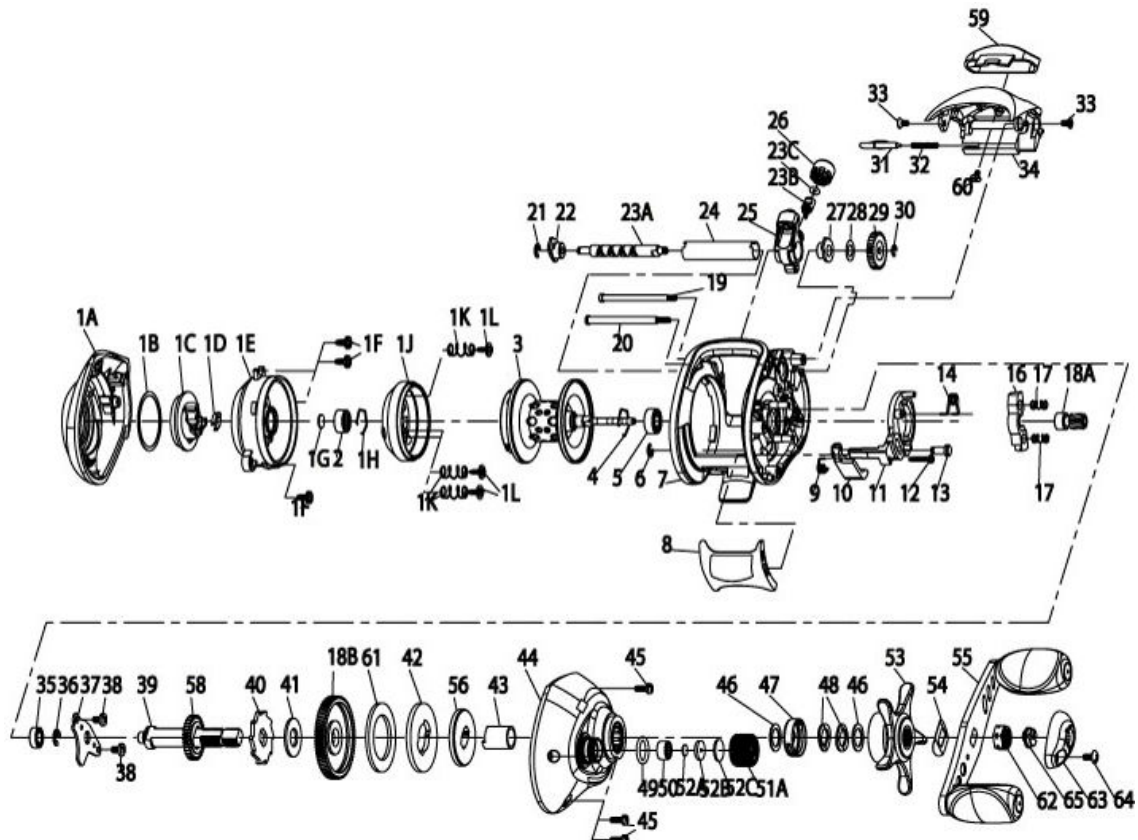
QUANTUM[®]

AC570PTs

For parts and service

call toll free: 1-888-404-1119

www.mikesreelrepair.com



Quantum AC570PTs Bait Cast Reel Part List

Key #	Description	Part No.	Key #	Description	Part No.
1	Palm Side Cover Kit include	YX4023-06	28	Worm Shaft Washer	EX035-01
	1A - Palm Side Cover Assembly		29	O/S Pinion Gear	UX085-01
	1B - Centrifugal Dial Washer		30	E-Clip	NX090-01
	1C - Centrifugal Dial		31	Palm Side Cover Locking Lever	YX119-02
	1D - Centrifugal Dial Spring		32	Palm Side Cover Locking Spring	ZW096-01
	1E - Spool Cover		33	Hood Screw	HX107-01
	1F - Spool Cover Screw		34	Hood	BW027-02
	1G - Spool Shaft Washer		35	Crank Shaft Bearing - Lower	SW017-01
	1H - Clip Ring		36	E-Clip	QW120-01
	1J - Brake Ring Assembly		37	Crank Shaft Retainer	BW002-01
	1K - Brake Ring Slider Spring		38	Crank Shaft Retainer Screw	JX107-02
	1L - Spool Cover Screw		39	Crank Shaft	GX008-05
	2 - Spool Shaft Bearing (Palm)		40	Trip Ratchet	EX083-01
2	Palm Side Spool Shaft Bearing	QV017-01	41	Trip Ratchet Washer	QW111-01
3	Spool Assembly	TX321-06	42	Drag Key Washer	UX045-01
4	Clip Ring	EX080-01	43	One Way Bearing Sleeve	HV052-01
5	Gear Side Spool Shaft Bearing	EX017-02	44	Gear Side Cover Assembly	VV324-01
6	E-Clip	NX092-01	45	Gear Side Cover Screw	BV123-03
7	Frame	BW001-01	46	Star Drag Washer	ZW032-01
8	Thumb Bar	UX009-01	47	Drag Click Spring Assembly	YX4114-01
9	Kick Lever Spring	GX097-01	48	Spring "D" Washer	JX046-01
10	Kick Lever	UX077-02	49	Tension Knob O-Ring	QW101-01
11	Release Slider	BW039-01	50	Tension Knob Bearing	SW117-01
12	Thumb Bar Screw	ZW053-01	51	Tension Knob Kit include	CX4033-02
13	Release Slider Guide Pin	UX102-02		51A - Spool Tension Knob Assembly	
14	Release Slider Spring	YV104-01		52 - Spool Tension Washer Kit	
16	Pinion Yoke	GX025-01	52	Spool Tension Washer Kit Include	QW4032-01
17	Yoke Spring	GX040-01		52A - Spool Tension Washer	
18	Gear Kit include	VX4011-01		52B - Spool Tension Collar	
	18A - Pinion Gear Assembly			52C - Spool Cushion Washer	
	18B - Drive Gear		53	Star Drag Assembly	YX355-07
19	Stabilizer Bar - "B"	SX061-02	54	Handle Washer	NX054-01
20	Stabilizer Bar - "A"	YX061-03	55	Handle Assembly	YX318-04
21	E-Clip	NX092-01	56	Drag Link	UX036-01
22	Palm Side Worm Shaft Bushing	GX067-01	58	O/S Drive Gear	UX112-01
23	Worm Shaft Kit Include	HV4072-03	59	Front Support	YX099-02
	23A - Worm Shaft		60	Front Support Screw	EX107-01
	23B - Line Guide Pawl		61	Drag Disc	UX059-01
	23C - Carrier Washer		62	Handle Nut	QW003-01
24	Worm Shaft Guide	YX016-01	63	Handle Nut Cap	ZW034-03
25	Line Guide Carrier	YX047-02	64	Handle Nut Cap Screw	QW123-10
26	Line Guide Carrier Screw	ZW007-02	65	Indicator	ZW130-02
27	Gear Side Worm Shaft Bushing	HV068-01			