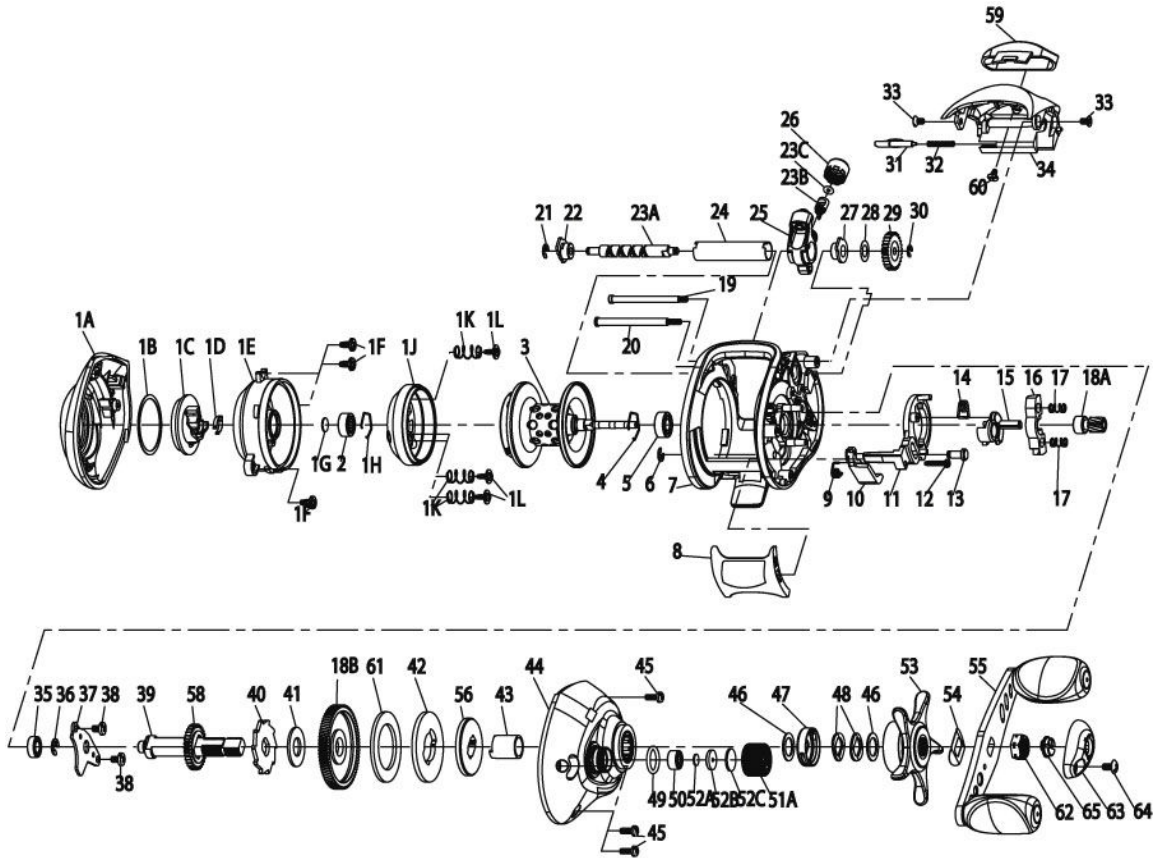


QUANTUM[®]

AC570PT

For parts and service
 call toll free: 1-888-404-1119
 www.mikesreelrepair.com



Quantum AC570PT Bait Cast Reel Part List					
Key #	Description	Key #	Description	Key #	Description
1	Palm Side Cover Kit include 1A - Palm Side Covoer Assembly 1B - Centrifugal Dial Washer 1C - Centrifugal Dial 1D - Centrifugal Dial Spring 1E - Spool Cover 1F - Spool Cover Screw 1G - Spool Shaft Washer 1H - Clip Ring 1J - Brake Ring Assembly 1K - Brake Ring Slider Spring 1L - Spool Cover Screw 2 - Spool Shaft Bearing (Palm)	YX4023-02	27	Gear Side Worm Shaft Bushing	HV068-01
2	Palm Side Spool Shaft Bearing	QV017-01	28	Worm Shaft Washer	EX035-01
3	Spool Assembly	TX321-05	29	O/S Pinion Gear	UX085-01
4	Clip Ring	EX080-01	30	E-Clip	NX090-01
5	Gear Side Spool Shaft Bearing	EX017-02	31	Palm Side Cover Locking Lever	YX119-01
6	E-Clip	NX092-01	32	Palm Side Cover Locking Spring	ZW096-01
7	Frame	BW001-01	33	Hood Screw	HX107-01
8	ThumbBar	UX009-01	34	Hood	BW027-01
9	Kick Lever Spring	GX097-01	35	Crank Shaft Bearing - Lower	SW017-01
10	Kick Lever	UX077-02	36	E-Clip	QW120-01
11	Release Slider	BW039-01	37	Crank Shaft Retainer	BW002-01
12	Thumb Bar Screw	ZW053-01	38	Crank Sahft Retainer Screw	JX107-02
13	Release Slider Guide Pin	UX102-01	39	Crank Shaft	GX008-03
14	Release Slider Spring	YX104-01	40	Trip Ratchet	EX083-01
15	Flippin Lever	YX087-02	41	Trip Ratchet Washer	QW111-01
16	Pinion Yoke	GX025-01	42	Drag Key Washer	UX045-01
17	Yoke Spring	GX040-01	43	One Way Bearing Sleeve	HV052-01
18	Gear Kit include 18A - Pinion Gear Assembly 18B - Drive Gear	VX4011-01	44	Gear Side Cover Assembly	BW324-01
19	Stablizer Bar - "B"	SX061-01	45	Gear Side Cover Screw	BV123-03
20	Stablizer Bar - "A"	YX061-01	46	Star Drag Washer	ZW032-01
21	E-Clip	NX092-01	47	Drag Click Spring Assembly	YX4114-01
22	Palm Side Worm Shaft Bushing	GX067-01	48	Spring "D" Washer	JX046-01
23	Worm Shaft Kit include 23A - Worm Sahft 23B - Line Guide Pawl 23C - Carrier Washer	HV4072-02	49	Tension Knob O-Ring	QW101-01
24	Worm Shaft Guide	YX016-01	50	Tension Knob Bearing	SW117-01
25	Line Guide Carrier	YX047-02	51	Tension Knob Kit include 51A - Spool Tension Knob Assembly 52 - Spool Tension Washer Kit	CX4033-01
26	Line Guide Carrier Screw	ZW007-02	52	Spool Tension Washer Kit Include 52A - Spool Tension Washer 52B - Spool Tension Collar 52C - Spool Cushion Washer	QW4032-01
			53	Star Drag Assembly	YX355-07
			54	Handle Washer	NX054-01
			55	Handle Assembly	YX318-05
			56	Drag Link	UX036-01
			58	O/S Drive Gear	UX112-01
			59	Front Support	YX099-02
			60	Front Support Screw	EX107-01
			61	Drag Disc	UX059-01
			62	Handle Nut	QW003-01
			63	Handle Nut Cap	ZW034-03
			64	Handle Nut Cap Screw	QW123-10
			65	Indicator	ZW130-02