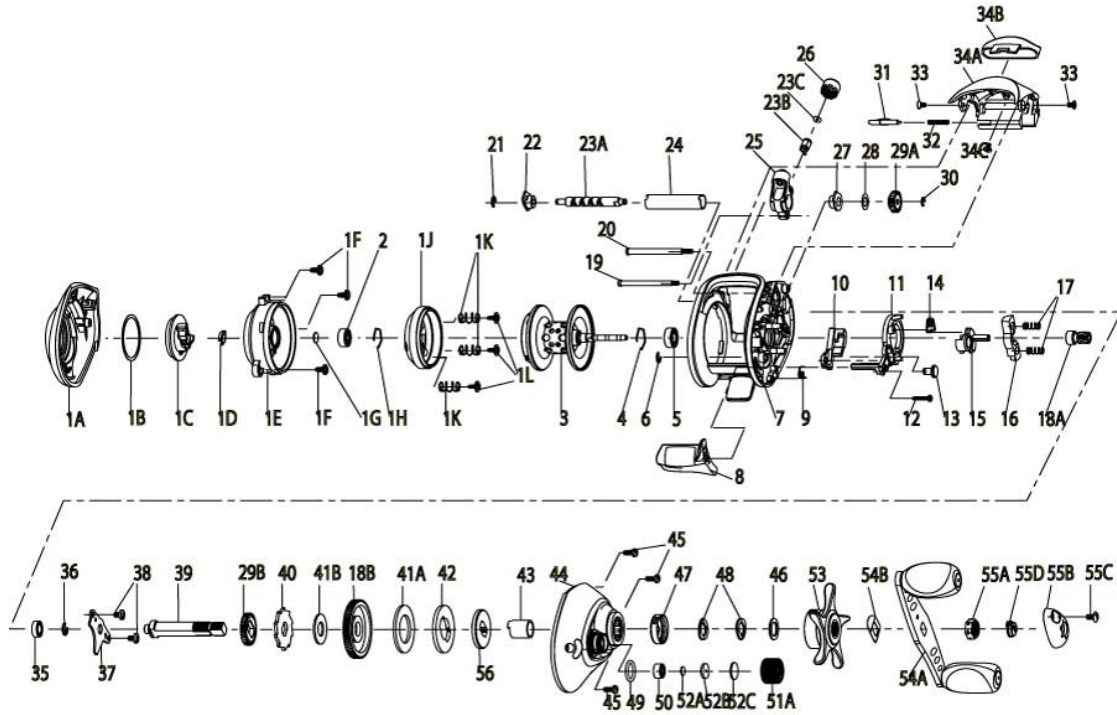


QUANTUM[®]

AC500PTs

For parts and service
call toll free: 1-888-404-1119
www.mikesreelrepair.com



Quantum New AC500PTs Bait Cast Reel Part List					
Key #	Description	Part No.	Key #	Description	Part No.
1	Palm Side Cover Kit include 1A - Palm Side Covoer Assembly 1B - Centrifugal Dial Washer 1C - Centrifugal Dial 1D - Centrifugal Dial Spring 1E - Spool Cover 1F - Spool Cover Screw 1G - Spool Shaft Washer 1H - Clip Ring 1J - Brake Ring Assembly 1K - Brake Ring Slider Spring 1L - Spool Cover Screw 2 - Spool Shaft Bearing (Palm)	YX4023-06	30	E-Clip	NX090-01
2	Palm Side Spool Shaft Bearing	QV017-01	31	Palm Side Cover Locking Lever	YX119-02
3	Spool Assembly	TX321-03	32	Palm Side Cover Locking Spring	ZW096-01
4	Clip Ring	EX080-01	33	Hood Screw	HX107-02
5	Gear Side Spool Shaft Bearing	EX017-02	34	Hood Kit include 34A - Hood 34B - Front Support 34C - Front Support Screw	YX4027-02
6	E-Clip	NX092-01	35	Crank Shaft Bearing - Lower	SW017-01
7	Frame	YX001-04	36	E-Clip	QW120-01
8	ThumbBar	YX009-01	37	Crank Shaft Retainer	GX002-01
9	Kick Lever Spring	GX097-01	38	Crank Sahft Retainer Screw	JX107-02
10	Kick Lever	YX077-02	39	Crank Shaft	GX008-05
11	Release Slider	YX039-01	40	Trip Ratchet	EX083-01
12	Thumb Bar Screw	ZW053-01	41	Drag Disc Kit include 41A - Drag Disc 41B - Trip Ratchet Washer	HV4059-01
13	Release Slider Guide Pin	YX102-02	42	Drag Key Washer	MX045-01
14	Release Slider Spring	YV104-01	43	One Way Bearing Sleeve	HV052-01
16	Pinion Yoke	GX025-01	44	Gear Side Cover Assembly	YV324-01
17	Yoke Spring	GX040-01	45	Gear Side Cover Screw	BV123-03
18	Gear Kit include 18A - Pinion Gear Assembly 18B - Drive Gear	YX4011-01	46	Star Drag Washer	ZW032-03
19	Stablizer Bar - "B"	SX061-02	47	Drag Click Spring Assembly	YX4114-01
20	Stablizer Bar - "A"	YX061-03	48	Spring "D" Washer	JX046-01
21	E-Clip	NX092-01	49	Tension Knob O-Ring	QW101-01
22	Palm Side Worm Shaft Bushing	GX067-01	50	Tension Knob Bearing	SW117-01
23	Worm Shaft Kit Include 23A - Worm Sahft 23B - Line Guide Pawl 23C - Carrier Washer	HV4072-03	51	Tension Knob Kit include 51A - Spool Tension Knob Assem 52 - Spool Tension Washer Kit	CX4033-02
24	Worm Shaft Guide	YX016-01	52	Spool Tension Washer Kit Include 52A - Spool Tension Washer 52B - Spool Tension Collar 52C - Spool Cushion Washer	QW4032-01
25	Line Guide Carrier	YX047-02	53	Star Drag Assembly	YX355-01
26	Line Guide Carrier Screw	ZW007-02	54	Handle Kit include 54A - Handle Assembly 54B - Handle Washer 55 - Handle Nut Kit	YX4018-04
27	Gear Side Worm Shaft Bushing	HV068-01	55	Handle Nut Kit include 55A - Handle Nut 55B - Handle Nut Cap 55C - Handle Nut Cap Screw 55D - Indicator	QW4003-05
28	Worm Shaft Washer	EX035-01	56	Drag Link	GX036-01
29	O/S Gear Kit include 29A - O/S Pinion Gear 29B - O/S Drive Gear	GX4085-01			