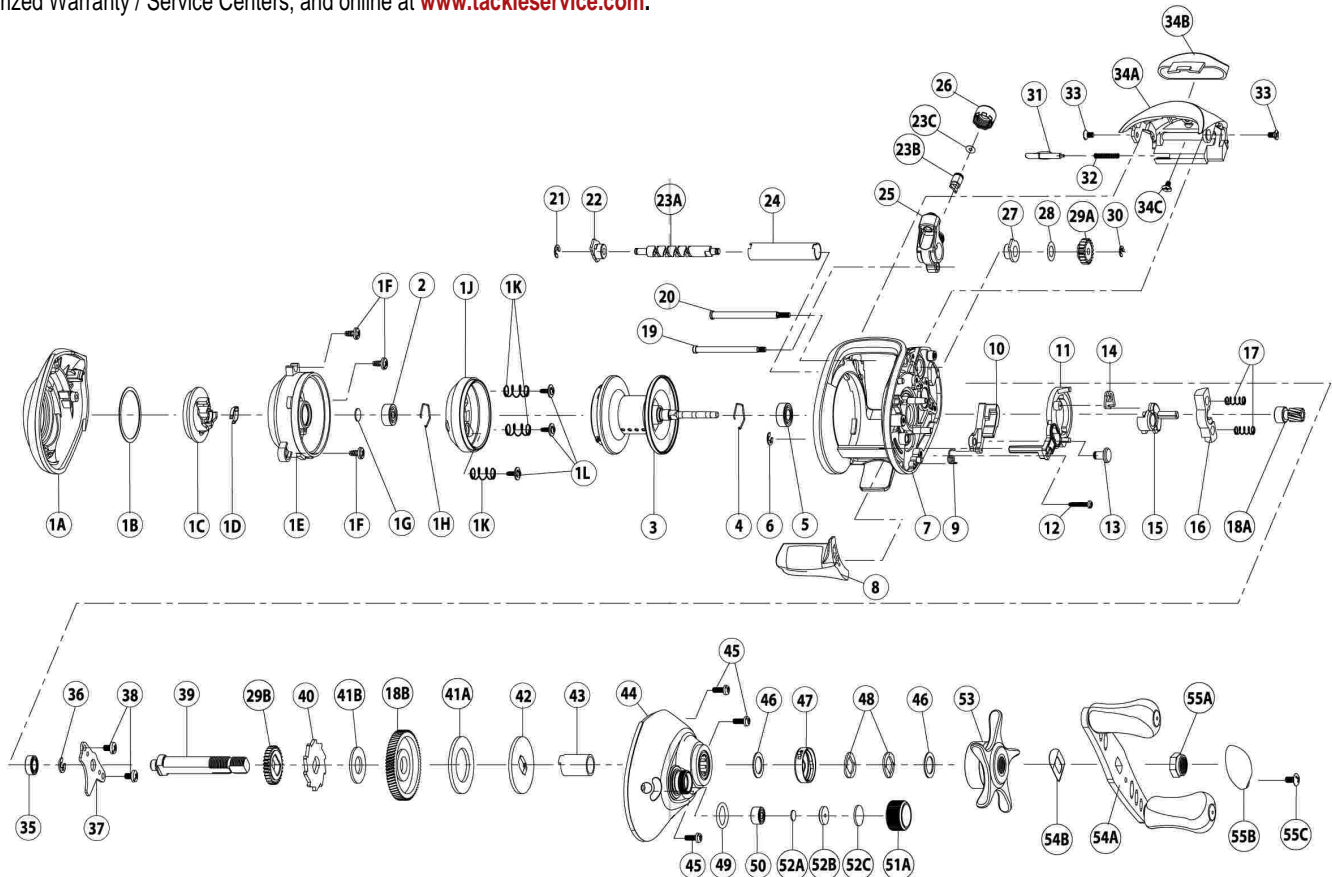


AC500CX Parts Diagram - Right Hand Model

ORDERING PARTS

Refer to the parts list and diagram for your model. Locate the part you need and identify the key number for the part you wish to order for your model. Always state the model number, part number, part description and quantity on your orders. Parts may be ordered direct from the Factory Service Department (1-800-588-9030), Authorized Warranty / Service Centers, and online at www.tackleservice.com.



Key#	Description	AC500CXG	AC500CXB	AC500CXR
1	Palm side cover kit includes	YX4023-01	YX4023-03	YX4023-04
	1A- Palm side cover assembly			
	1B- Centrifugal dial washer			
	1C- Centrifugal dial			
	1D- Centrifugal dial spring			
	1E- Spool cover			
	1F- Spool cover screw			
	1G- Spool shaft washer			
	1H- Clip ring			
	1J- Brake ring assembly			
	1K- Brake ring slider spring			
	1L- Spool cover screw			
	2- Spool shaft bearing (palm)			
2	Palm Side Spool Shaft Bearing	QV017-01	QV017-01	QV017-01
3	Spool Assembly	YX321-01	YX321-03	YX321-01
4	Clip Ring	EX080-01	EX080-01	EX080-01
5	Gear Side Spool Shaft Bearing	EX017-02	EX017-02	EX017-02
6	E-Clip	NX092-01	NX092-01	NX092-01
7	Frame	YX001-01	YX001-02	YX001-01
8	ThumbBar	YX009-01	YX009-01	YX009-01
9	Kick Lever Spring	GX097-01	GX097-01	GX097-01
10	Kick Lever	YX077-01	YX077-01	YX077-01
11	Release Slider	YX039-01	YX039-01	YX039-01
12	Thumb Bar Screw	ZW053-01	ZW053-01	ZW053-01
13	Release Slider Guide Pin	YX102-01	YX102-01	YX102-01
14	Release Slider Spring	YX104-01	YX104-01	YX104-01
15	Flippin Lever	YX087-01	YX087-01	YX087-01
16	Pinion Yoke	GX025-01	GX025-01	GX025-01
17	Yoke Spring	GX040-01	GX040-01	GX040-01
18	Gear Kit includes	YX4011-01	YX4011-01	YX4011-01
	18A - Pinion Gear Assembly			
	18B - Drive Gear			
19	Stablizer Bar - "B"	SX061-01	SX061-01	SX061-01
20	Stablizer Bar - "A"	YX061-01	YX061-01	YX061-01
21	E-Clip	NX092-01	NX092-01	NX092-01
22	Palm Side Worm Shaft Bushing	GX067-01	GX067-01	GX067-01
23	Worm Shaft Kit Includes	HV4072-01	HV4072-01	HV4072-01
	23A - Worm Shaft			
	23B - Line Guide Pawl			
	23C - Carrier Washer			
24	Worm Shaft Guide	YX016-01	YX016-01	YX016-01
25	Line Guide Carrier	YX047-01	YX047-01	YX047-01
26	Line Guide Carrier Screw	ZW007-02	ZW007-02	ZW007-02
27	Gear Side Worm Shaft Bushing	HV068-01	HV068-01	HV068-01
28	Worm Shaft Washer	EX035-01	EX035-01	EX035-01

Key#	Description	AC500CXG	AC500CXB	AC500CXR
29	O/S Gear Kit includes	GX4085-01	GX4085-01	GX4085-01
	29A - O/S Pinion Gear			
	29B - O/S Drive Gear			
30	E-Clip	NX090-01	NX090-01	NX090-01
31	Palm Side Cover Locking Lever	YX119-01	YX119-01	YX119-01
32	Palm Side Cover Locking Spring	ZW096-01	ZW096-01	ZW096-01
33	Hood Screw	HX107-01	HX107-1	HX107-1
34	Hood Kit includes	YX4027-01	YX4027-03	YX4027-04
	34A - Hood			
	34B - Front Support			
	34C - Front Support Screw			
35	Crank Shaft Bearing - Lower	SW017-01	SW017-01	SW017-01
36	E-Clip	QW120-01	QW120-01	QW120-01
37	Crank Shaft Retainer	GX002-01	GX002-01	GX002-01
38	Crank Shaft Retainer Screw	JX107-01	JX107-01	JX107-01
39	Crank Shaft	GX008-01	GX008-01	GX008-01
40	Trip Ratchet	EX083-01	EX083-01	EX083-01
41	Drag Disc Kit includes	HV4059-01	HV4059-01	HV4059-01
	41A - Drag Disc			
	41B - Trip Ratchet Washer			
42	Drag Key Washer	GX045-01	GX045-01	GX045-01
43	One Way Bearing Sleeve	GX052-01	GX052-01	GX052-01
44	Gear Side Cover Assembly	YX324-01	YX324-03	YX324-04
45	Gear Side Cover Screw	BV123-01	BV123-01	BV123-01
46	Star Drag Washer	ZW032-01	ZW032-01	ZW032-01
47	Drag Click Spring Assembly	YX4114-01	YX4114-01	YX4114-01
48	Spring "D" Washer	JX046-01	JX046-01	JX046-01
49	Tension Knob O-Ring	QW101-01	QW101-01	QW101-01
50	Tension Knob Bearing	SW117-01	SW117-01	SW117-01
51	Tension Knob Kit includes	HV4033-01	HV4033-01	HV4033-01
	51A - Spool Tension Knob			
	52 - Spool Tension Washer Kit			
52	Spool Tension Washer Kit Includes	QW4032-01	QW4032-01	QW4032-01
	52A - Spool Tension Washer			
	52B - Spool Tension Collar			
	52C - Spool Cushion Washer			
53	Star Drag Assembly	YX355-01	YX355-01	YX355-01
54	Handle Kit includes	CX4018-01	CX4018-01	CX4018-01
	54A - Handle Assembly			
	54B - Handle Washer			
55	Handle Nut Kit includes	RV4003-02	RV4003-01	RV4003-02
	55A - Handle Nut			
	55B - Handle Nut Cap			
	55C - Handle Nut Cap Screw			
	55D - Indicator			