

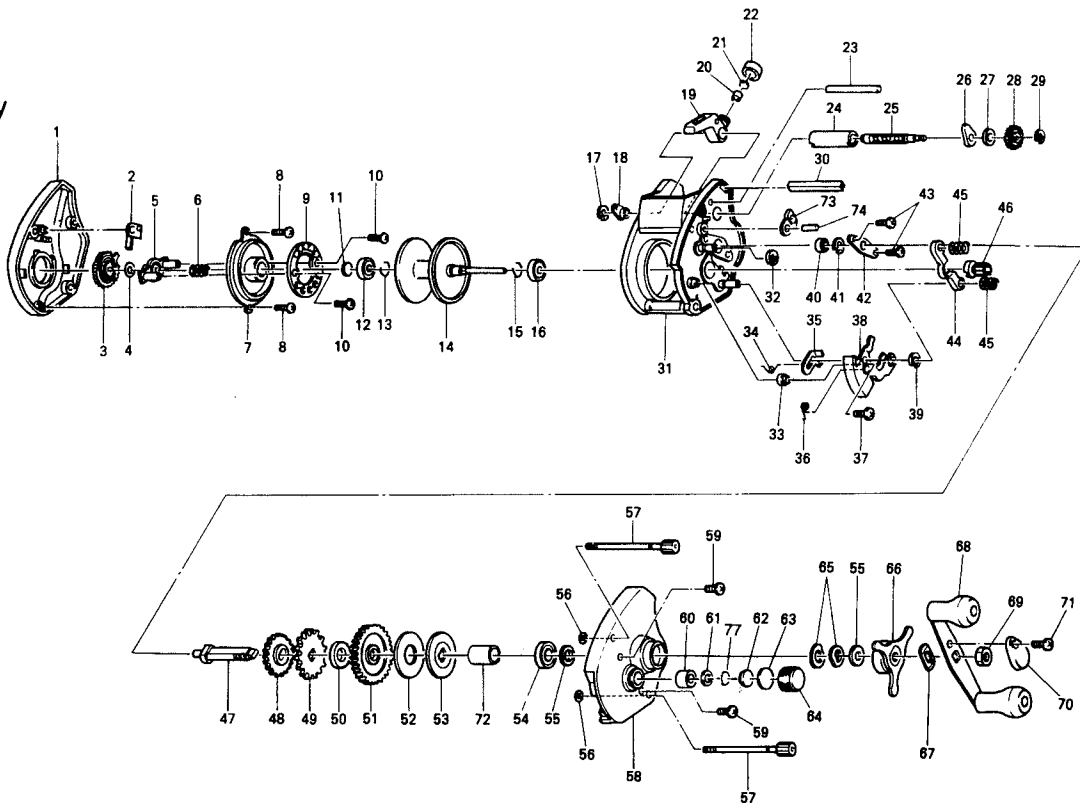
# QUANTUM® 1310 MGA

## SPECIFICATIONS:

Medium Freshwater  
 165 yds./12 lb. Line Capacity  
 5.1:1 Ratio  
 9.2 oz. Weight  
 2 BB

## FEATURES:

Posi-Lok Anti-reverse  
 DynaMag magnetic anti-backlash control  
 Forged aluminum spool  
 Machined brass Magnum Gears  
 Q-cast thumb button clutch  
 Multi-disc drag system  
 Left hand retrieve  
 Color: Silver



Key No.	Part No.	Description	Price	Key No.	Part No.	Description	Price
1	AV323-01	Left Side Cover Assy	10.75	39	QW120-01	Yoke Post E-Clip	.26
2	AV108-01	Magnet Click Claw	1.55	40	JX017-01	Crank Shaft Bushing - L	.77
3	AV026-01	Magnet Dial	1.55	41	QW120-01	Crank Shaft E-Clip	.26
4	NX105-01	Dial Friction Ring	.62	42	JX002-01	Crank Shaft Retainer	.57
5	AV028-01	Slider Cam	1.55	43	JX107-01	Crank Shaft Retainer Screw	.15
6	NX071-01	Slide Cam Spring	.52	44	AV025-01	Pinion Yoke	.80
7	AV051-01	Spool Cover	2.80	45	AV040-01	Yoke Spring	.50
8	AV125-01	Spool Cover Screw	.70	46	AV011-01	Pinion Gear	5.55
9	AV330-01	Magnet Plate Assy	7.40	47	JX008-01	Crank Shaft	2.88
10	QW076-02	Magnet Plate Screw	.21	48	JX112-01	O/S Drive Gear	.46
11	XX038-02	Spool Shaft Washer	.26	49	JX083-01	Trip Ratchet	.93
12	XX106-01	Spool Shaft Bushing	1.15	50	JX111-01	Ratchet Washer	.46
13	JX080-01	Clip Ring	.26	51	AV012-01	Drive Gear	7.95
14	AV321-01	Spool Assy	10.15	52	AV059-01	Drag Disc	1.65
15	JX080-01	Clip Ring	.26	53	AV045-01	Drag "D" Washer	2.40
16	JX106-01	Spool Shaft Bearing	6.33	54	TW058-01	Crank Shaft Ball Bearing - U	7.21
17	QW120-01	Worm Shaft Bush E-Clip	.26	55	JX038-01	Crank Shaft Washer	.31
18	XX067-01	Worm Shaft Bushing "B"	.80	56	JX073-01	Thumb Screw O-Ring	.31
19	AV347-01	Line Guide Carrier Assy	2.60	57	AV374-01	Thumb Screw Assy	3.10
20	JX006-01	Line Guide Pawl	1.80	58	AV024-01	Right Side Cover	13.85
21	JX035-01	Line Guide Pawl Washer	.26	59	QW123-07	Right Side Cover Screw	.35
22	JX007-02	Pawl Cap Screw	.52	60	JX117-01	Tension Knob Bushing	.59
23	JX061-01	Carrier Guide	.98	61	AV101-01	Tension Knob O-Ring	.65
24	JX016-01	Worm Shaft Guide	.72	62	JX081-01	Spool Tension Collar	2.90
25	AV072-01	Worm Shaft	4.65	63	AV083-01	Cushion Washer	.80
26	AV067-01	Worm Shaft Bushing "A"	.80	64	AV033-01	Spool Tension Knob	2.90
27	AV035-01	Washer - Worm Shaft Bushing	.50	65	JX046-01	Spring "D" Washer	.67
28	AV085-01	Level Wind Gear	.80	66	AV355-01	Star Drag Assy	6.30
29	NX092-01	Level Wind Gear E-Clip	.30	67	NX054-01	Handle Washer	.26
30	AV027-01	Front Support	2.85	68	AV318-01	Handle Assy	8.15
31	AV301-01	Frame Assy	27.50	69	QW003-01	Handle Nut	.36
32	QW120-01	Yoke Post E-Clip	.26	70	QW034-01	Handle Nut Cap	.26
33	JX068-01	Release Slider Guide Bushing	1.08	71	QW123-01	Handle Nut Cap Screw	.15
34	AV097-01	Kick Lever Spring	.70	72	JX052-01	Crank Shaft Spacer	.67
35	AV077-01	Kick Lever	1.30	73	JX363-01	Anti-Reverse Pawl Assy	2.52
36	JX104-01	Release Slider Spring	.21	74	JX098-01	Anti-Reverse Pawl Post	.41
37	QW123-01	Release Slider Screw	.15	77	QW032-01	Spool Tension Washer	.52
38	AV339-01	Release Slider Assy	2.60				

<b>MODEL INTRODUCED</b>	1997	<b>EFFECTIVE DATE OF PARTS LIST/DIAGRAM</b>	Oct. 1996	<b>DISCONTINUED</b>	N/A
-------------------------	------	---	-----------	---------------------	-----

Prices subject to change without notice. Prices do not include postage and handling.

