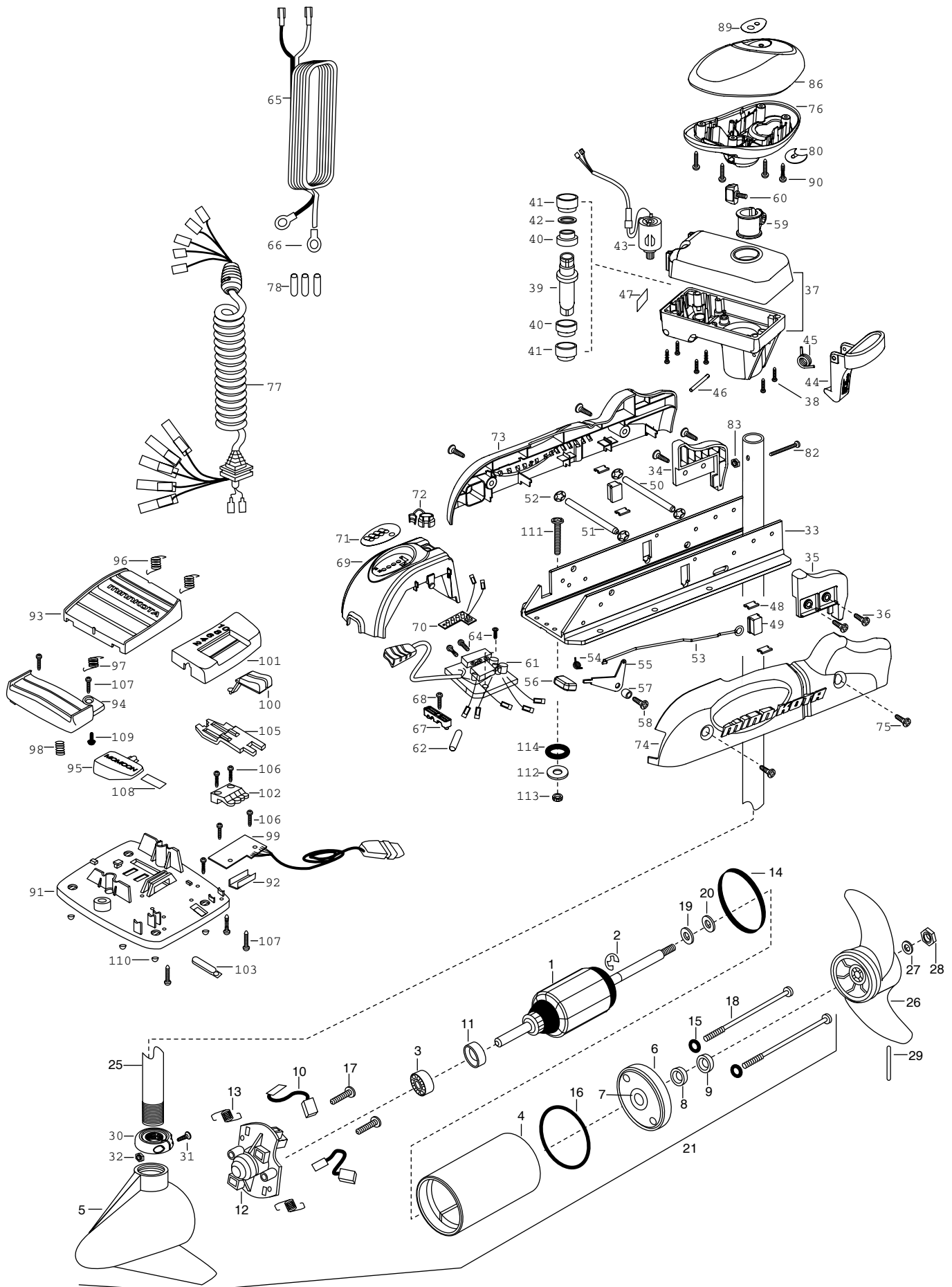


**64PD PONTOON**  
**64 LBS THRUST**  
**24 VOLT 38 AMPS**  
**48" SHAFT**

For parts and service  
call toll free: 1-888-404-1119  
[www.mikesreelrepair.com](http://www.mikesreelrepair.com)



For parts and service  
call toll free: 1-888-404-1119  
[www.mikesreelrepair.com](http://www.mikesreelrepair.com)

1	92-100-009 ARMATURE ASSEMBLY 24V FW SW	■	2882011 BUSHING/ OUTSHAFT KIT	74	2303948 SIDEPLATE(LEFT) PONTOON
2	788-015 RETAINING RING		(INCLUDES 39-42)	75	2303430 SCREW-1/4-20 X 5/8- [4.EA]
3	140-010 BALL BEARING	*39	2302010 DRIVE HOUSING OUTPUT SHAFT	76	2302515 CONTROL BOX PD/AP
4	431-005 CENTER HOUSING ASSEMBLY 3.62 TXT	*40	2307304 BUSHING- INNER [2.EA]	77	2991250 COIL CORD WSTRAIN RELIEF 48"
5	421-065 HOUSING BRUSH END 3.62 TXT FW	*41	2307305 BUSHING- OUTER [2.EA]	78	2065400 WIRE INSULATOR-LGE 1-3/4 [3.EA]
6	2-400-101 PLAIN END HOUSING ASSEMBLY 3.625	*42	2304603 O-RING	80	2224700 INSERT- PLUG
7	144-049 BEARING - FLANGE (SERVICE ONLY)	43	2307045 MOTOR- DRIVE HOUSING HIGH SPD	82	2033400 SCREW-10-24 X 1-3/4 PPH Z/P
8	880-003 **SEAL	44	2307205 LATCH HANDLE PD/AP	83	2013110 NUT-HEX 10-24 NYLOC
9	880-006 **SEAL WITH SHIELD	45	2302750 SPRING- LATCH TORSION PD/AP	86	2300235 CONTROL BOX COVER- POWERDRIVE
10	188-036 BRUSH ASSEMBLY [2.EA]	46	2302607 PIN- DRIV-LOK GROOVE ZINC TYPE	89	2315668 DECAL- COVER 64 PONTOON
11	725-050 BRUSH RETENTION- PAPER TUBE	47	2305514 DECAL-STOW/DEPLOY	90	2012100 SCREW-8-18 X 5/8 [4.EA]
12	738-036 BRUSH PLATE W/HOLDER	48	2305110 PAD-PIVOT SUPT [4.EA]	■	2774700 FOOT PEDAL ASSEMBLY
13	975-040 SPRING - TORSION [2.EA]	49	2305101 PIVOT PAD [2.EA]	91	2304511 FOOT PEDAL BASE
14	337-036 **GASKET	50	2300500 PIN-LATCH PD BASE	92	2308500 WEAR PLATE FOOT PDL
15	701-008 **O-RING, THRU-BOLT [2.EA]	51	2300510 PIN-PIVOT PD BASE	93	2304516 FOOT PEDAL-UPPER
16	701-081 **O-RING	52	2013100 NUT-SPEED [4.EA]	94	2304520 FOOT PEDAL-LOWER
17	830-007 SCREW-8-32 [2.EA]	53	2303612 ROD-RELEASE RT/AP SS	95	2307210 LEVER MOM/CON-
18	830-008 THRU-BOLT 10-32X9.2 [2.EA]	54	2302700 SPRING-RELEASE LEVER	96	2302730 SPRING-LONG-UPPER PEDAL [2.EA]
19	990-067 WASHER- STEEL THRUST	55	2303710 LEVER-RELEASE	97	2302731 SPRING-SHORT-UPPER PEDAL
20	990-070 WASHER - NYLATRON	56	2300101 RELEASE-KNOB	98	2302732 SPRING-LOWER PEDAL
21	2098032 MOTOR ASSEMBLY 24V 3.625 VARS FW	57	2301700 SPACER-RELEASE LEVER	99	2304012 CONTROL BOARD ASSEMBLY-FT PDL
25	2032075 TUBE-CARBON COMPOSITE 48"	58	2303430 SCREW-1/4-20 X 5/8	100	2300120 KNOB-SPEED SELECTOR
■	1378122 PROPELLER KIT	59	2031522 COLLAR- DRIVE (W/INSERT)	101	2300121 HOUSING SPEED SELECTOR
26	2091150 PROPELLER W/WEDGE	60	2011365 SCREW-COLLAR/NEW KNOB	102	2302840 ACTUATOR-BOARD
27	2151726 WASHER-5/16 SS	61	2304042 CTRL BOARD ASSEMBLY-24V PD/AP	103	2302841 ACTUATOR-MOM/CON
28	2053101 NUT-PROP NYLOC 5/16 SS	62	2355410 SHRINK TUBE-3/8 ODX2	105	2302842 ACTUATOR-STEERING
29	2092600 PIN-DRIVE	64	2332100 SCREW-8-32 X 3/8 MACHINE [3.EA]	106	2302100 SCREW-6-20 X 1/2 [5.EA]
30	2301545 COLLAR- LATCH PD/AP	65	2090601 LEADWIRE 10 GA 44"	107	2372100 SCREW-8-18 X 5/8 [5.EA]
31	2303434 SCREW- 8-32X5/8 MACH PHCR	66	2020700 TERMINAL RING [2.EA]	108	2266610 DECAL-ON/OFF SWITCH
32	2303112 NUT 8-32 NYLOC SS	67	2222906 STRAIN RELIEF- BRACKET PD/AP	109	2335130 BUMPER ACTUATOR
33	2301932 EXTRUSION- BASE MACHINED	68	2303430 SCREW-1/4-20 X 5/8	110	2994807 BAG ASSEMBLY- 4 RUBBER BUMPERS
34	2303932 MOTOR REST- RIGHT LARGE 3-5/8	69	2306555 HOUSING- CENTER PD/AP	■	2994803 BAG ASSEMBLY- (BOLT,NUT,WASHERS)
35	2303937 MOTOR REST- LEFT LARGE 3-5/8	70	2034026 BATTERY GAUGE - 24 VOLT	*111	2153501 BOLT-MOUNTING-3500 W/STG [4.EA]
36	2303430 SCREW 1/4-20X5/8 SELF TAP [4.EA]	71	2306609 DECAL, BATTERY GAUGE	*112	2151726 WASHER-5/16 [4.EA]
37	2301845 DRIVE HOUSING PD/AP 2001	72	2302935 STRAIN RELIEF-DR. HOUSING	*113	2153100 NUT-5/16-18 MOUNTING [4.EA]
38	2303405 SCREW- DRIVE HOUSING [6.EA]	73	2303943 SIDEPLATE (RIGHT) PONTOON	*114	2301720 WASHER-MOUNTING RUBBER [6.EA]

**\*\*Seal & Oring Kit P/N 2888460**

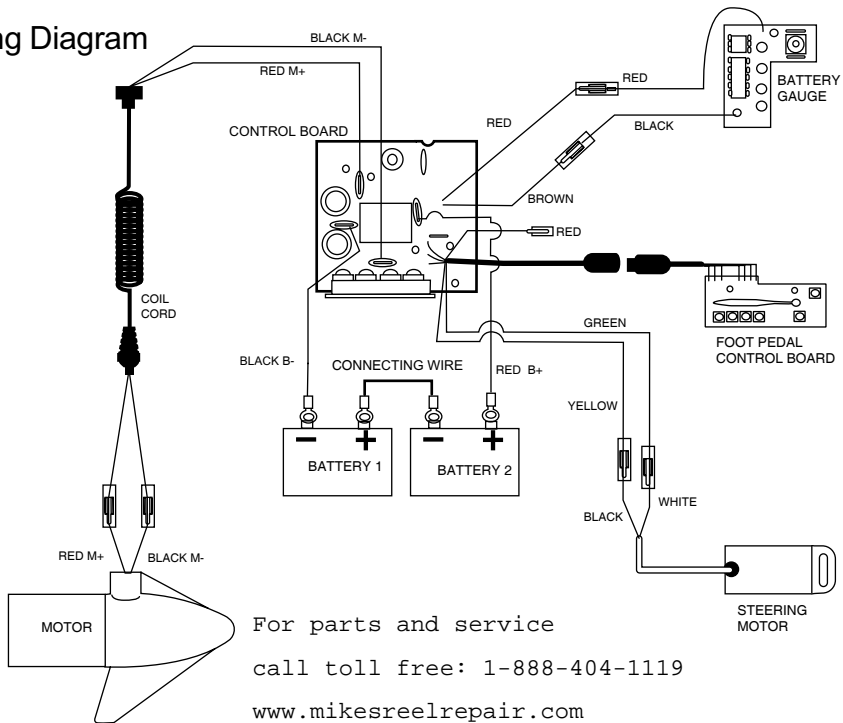
\* This item is part of an assembly. This item cannot be sold separately due to machining and /or assembly that is required.

P/N

2314926

REVA 4-01

# 64 Pontoon Wiring Diagram



For parts and service  
call toll free: 1-888-404-1119  
[www.mikesreelrepair.com](http://www.mikesreelrepair.com)