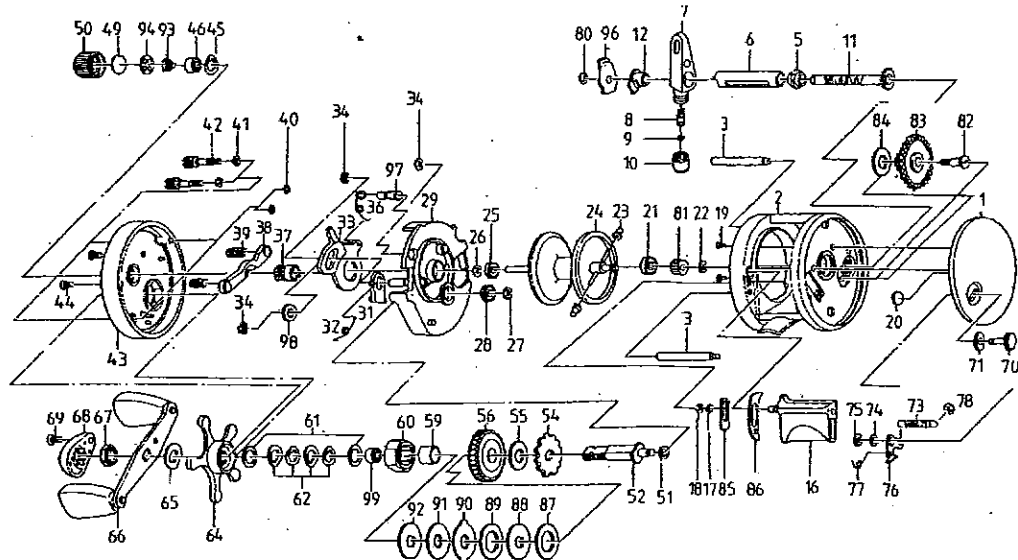




Trion 66 L
 PFLTRION66L Left Hand

PFLUEGER TRION 66L BAITCAST REEL



Part #	Part Name	Part #	Part Name
1	Right Side Cover	51	Crank Shaft Spring Washer
2	Frame Assembly	52	Crank Shaft
3	Pillar	54	Trip Ratchet
5	Worm Shaft Bushing	55	Trip Ratchet Washer
6	Worm Shaft Guide	56	Drive Gear
7	Line Guide Carrier Assembly	59	One Way Bearing Sleeve
8	Line Guide Pawl	60	One Way Bearing
9	Line Guide Pawl Washer	61	Crank Shaft Washer
10	Line Guide Pawl Cap Screw	62	Spring D Washer
11	Worm Shaft - 1146303	64	Star Drag Assembly
12	Bushing	65	Handle Washer
16	Thumb Bar Assembly	66	Handle Assembly
17	Thumb Bar Washer	67	Handle Nut
18	Retainer	68	Handle Nut Cap
19	Right Side Cover Screw	69	Handle Nut Cap Screw
20	Spool Tension Washer (A)	70	Click Lever
21	Ball Bearing	71	Click Lever Washer
22	Bearing Retainer	73	Click Pawl Spring - 1146756
23	Brake Collar	74	Click Pawl Washer
24	Spool Assembly	75	Click Pawl Retainer
25	Bearing	76	Click Pawl
26	Retainer	77	Click Set Plate Spring - 1146757
27	Retainer	78	Retainer
28	Bushing	80	Retainer
29	Set Plate	81	Pinion - 1145991
31	Kick Lever	82	Idle Gear Screw
32	Kick Lever Spring	83	Idle Gear - 1145642
33	Cam	84	Idle Gear Washer
34	Retainer	85	Plate
36	Cam Spring - 1146754	86	Thumb Bar Pad
37	Pinion Assembly - 1145646	87	Drag Washer (A)
38	Yoke	88	Drag Washer (B)
39	Yoke Spring - 1146755	89	Drag Washer (C)
40	O-Ring	90	Drag Washer (D)
41	Thumb Screw Washer	91	Drag Washer (E)
42	Thumb Screw	92	Drag Washer (F)
43	Left Side Plate	93	Tension Knob Spring - 1146758
44	Left Side Plate Screw	94	Tension Disc (A)
45	O-Ring	96	Plate
46	Bushing	97	Pillar
49	Tension Disc (B) - 1146342	98	Washer
50	Spool Tension Knob - 1145235	99	Ball Bearing