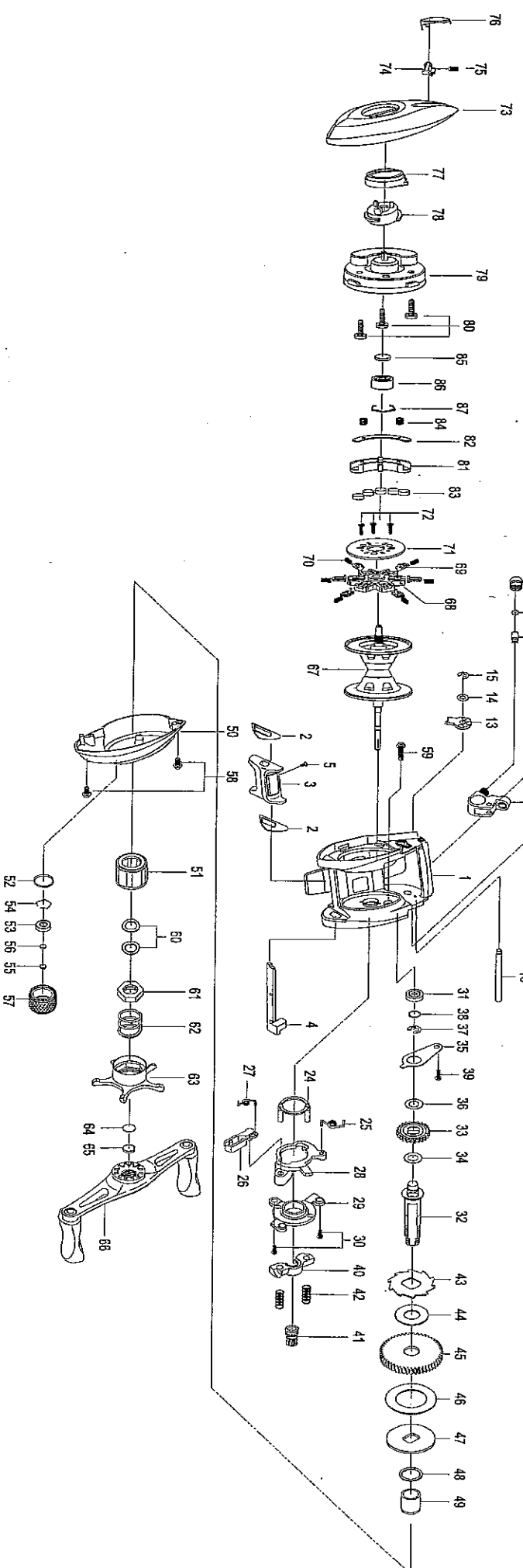


For Parts and Service
 Call 1-888-404-1119
 www.mikesirepair.com

Summit
 Lp
 Wide
 Spool
 Older

PFLSUMMITLP
 PFLSUMMITWLP-Older

85



| Part # | Part Name | Part # | Part Name |
|--------|--------------------------------|--------|------------------------------------|
| 1 | FRAME | 18 | SPACER- 1146318 |
| 2 | CLUTCH BAR PLATE | 19 | PAWL CUP |
| 3 | CLUTCH BAR ASSEMBLY | 20 | THUMB REST |
| 4 | CLUTCH LINK | 21 | THUMB REST SCREW(*2) |
| 5 | CLUTCH BAR SCREW | 22 | FRONT COVER |
| 6 | LINE GUIDE ASSEMBLY-1145148 | 23 | FRONT COVER SCREW(*2) |
| 7 | WORM SHAFT-1146320 | 24 | YOKE HOLDER-1146916 |
| 8 | BALL BEARING-1145107 | 25 | CLUTCH SPRING |
| 9 | WORM SHAFT BUSHING (A) | 26 | RETURN PAWL-1145942 |
| 10 | WORM SHAFT PIN-1145950 | 27 | RETURN PAWL SPRING-1146756 |
| 11 | LINE GUIDE PIPE-1145721 | 28 | CLUTCH CAM-1145184 |
| 12 | WORM SHAFT BUSHING (B)-1145175 | 29 | CAM PLATE-1145185 |
| 13 | WORM SHAFT WASHER-1146823 | 30 | CAM PLATE SCREW (A)(*2) |
| 14 | E-RING-1145282 | 31 | BALL BEARING-1145089 |
| 15 | PILLAR | 32 | CRANK SHAFT |
| 16 | LINE GUIDE PAWL-1145943 | 33 | IDLER(I)-1145607 |
| 17 | | 34 | IDLER(I) WASHER (A) |
| | | 35 | BEARING PLATE |
| | | 36 | IDLER(I) WASHER (B) |
| | | 37 | E-RING-1145282 |
| | | 38 | CRANK SHAFT SPACER-1146178 |
| | | 39 | BEARING PLATE SCREW |
| | | 40 | PINION YOKE-1146913 |
| | | 41 | PINION GEAR-1146008 |
| | | 42 | PINION YOKE SPRING (*2)-1146788 |
| | | 43 | RATCHET |
| | | 44 | RATCHET WASHER-1146889 |
| | | 45 | DRIVE GEAR |
| | | 46 | DRAG WASHER (B)-1146890 |
| | | 47 | DRAG WASHER (D) |
| | | 48 | SLEEVE WASHER |
| | | 49 | SLEEVE-1146321 |
| | | 50 | RIGHT SIDE COVER |
| | | 51 | ONE WAY CLUTCH-1145127 |
| | | 52 | O-RING-1146074 |
| | | 53 | BALL BEARING-1145123 |
| | | 54 | BUSHING RETAINER-1146063 |
| | | 55 | TENSION WASHER |
| | | 56 | SPOOL SPACER (B) |
| | | 57 | CAST CONTROL CAP-1146958 |
| | | 58 | (A) RIGHT SIDE COVER SCREW-1146261 |
| | | 59 | (B) RIGHT SIDE COVER SCREW-1146262 |
| | | 60 | DRAG SPRING WASHER (*2)-1146895 |
| | | 61 | DRAG NUT-1145891 |
| | | 62 | STAR DRAG SPRING-1146790 |
| | | 63 | STAR DRAG ASSEMBLY |
| | | 64 | CUSHION WASHER-1146891 |
| | | 65 | HANDLE SPACER-1145504 |
| | | 66 | HANDLE ASSEMBLY-1146571 |
| | | 67 | SPPOOL ASSEMBLY |
| | | 68 | BRAKE SHOE HOLDER |
| | | 69 | BRAKE SHOE (WHITE)(*)-1145292 |
| | | 70 | BRAKE SHOW SPRING (*8)-1146789 |
| | | 71 | BRAKE HOLDER PLATE |
| | | 72 | BRAKE HOLDER PLATE-1146263 |
| | | 73 | LEFT SIDE COVER-1146957 |
| | | 74 | LOCKING PIN |
| | | 75 | LOCKING PIN SPRING |
| | | 76 | PUSH BUTTON ASSEMBLY |
| | | 77 | CONTROL DIAL ASSEMBLY |
| | | 78 | SLIDE CAM |
| | | 79 | SPPOOL COVER ASSEMBLY |
| | | 80 | SPPOOL COVER SCREW (*3) |
| | | 81 | MAGNET HOLDER |
| | | 82 | MAGNET HOLDER PLATE |
| | | 83 | MAGNET (*5) |
| | | 84 | MAGNET HOLDER SPRING (*3) |
| | | 85 | SPPOOL SPACER (A) |
| | | | BALL BEARING-1145095 |
| | | | BEARING RETAINER-1146063 |

*66 SubCrank-1145500