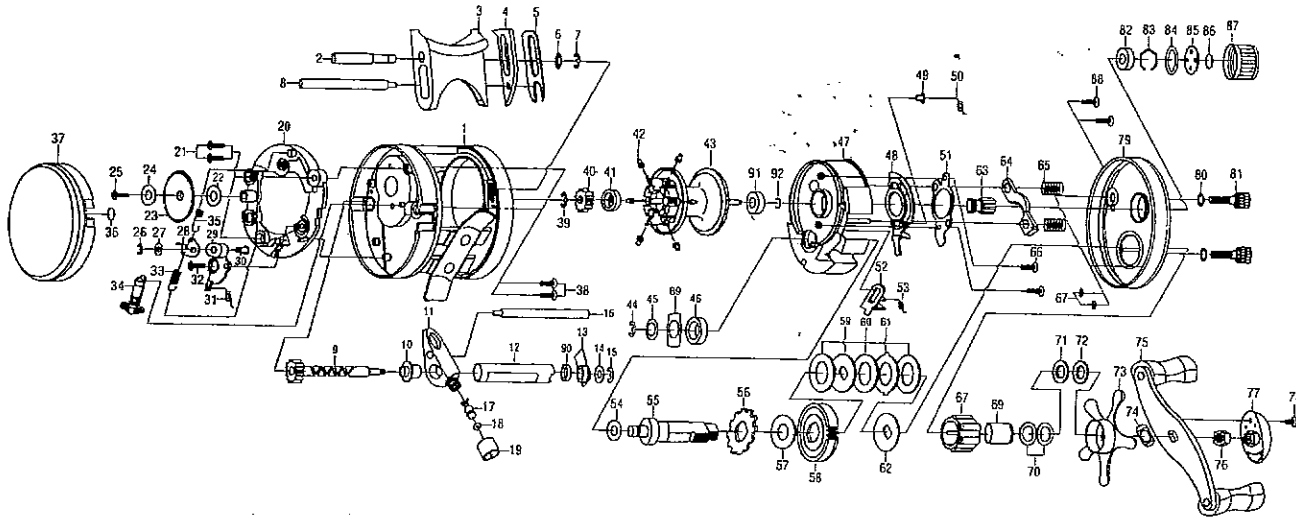


For Parts and Service
 Call 1-888-404-1119
 www.mikesreelrepair.com

Medalist BC6600G

Medalist®

BC6600G
 BAITCAST REEL



Part #	Part Name	Part #	Part Name	Part #	Part Name
1	Frame	32	Screw	63	Pinion Gear — 1145966
2	Clutch Bar Pin	33	Coil Spring A — 1146714	64	Yoke — 1146909
3	Clutch Bar	34	Click (bead)	65	Yoke Spring — 1146620
4	Wear Plate A	35	Coil Spring B — 1146713	66	Cam Plate Screw — 1146182
5	Wear Plate B	36	Spacer	67	Thumb Screw Ring — 1146070
6	Washer — 1146823	37	Left Side Cover	68	One Way Clutch Bearing — 1145087
7	Retainer (2.5)	38	Screw	69	Sleeve — 1146329
8	Pillar B	39	Retainer	70	Drag Spring Washer
9	Worm Shaft	40	Gear — 1145590	71	Star Drag Washer A — 1146833
10	Worm Shaft B — 1145172	41	Ball Bearing	72	Star Drag Washer B — 1146834
11	Level Wind — 1145138	42	Brake Collar — 1145287	73	Star Drag
12	Level Wind Guard	43	Spool Assembly	74	Friction Washer
13	Worm Shaft	44	Retainer (3.0) — 1145281	75	Handle Assembly
14	Washer	45	Crank Shaft Wa — 1146824	76	Handle Nut — 1145790
15	Retainer (2.5)	46	Ball Bearing — 1145089	77	Handle Nut Cap
16	Pillar A	47	Set Plate	78	Handle Nut Cap Screw — 1146178
17	Line Guide Pawl — 1145910	48	Clutch Cam	79	Right Side Cover
18	Line Guide Wa — 1146818	49	Spring Collar — 1145288	80	Thumb Screw Washer — 1146826
19	Level Wind Nut — 1145792	50	Clutch Cam Sp — 1146696	81	Thumb Screw — 1146188
20	Click Set Plate	51	Cam Plate — 1146014	82	Ball Bearing — 1145095
21	Screw	52	Kick Lever	83	Retainer
22	Washer	53	Kick Lever — 1146695	84	O-Ring — 1146071
23	Idle Gear — 1145589	54	Washer — 1146825	85	Spacer B
24	Washer	55	Crank Shaft	86	Cushion Washer — 1146835
25	Screw	56	Kick Ratchet	87	Cast Control Cap — 1145213
26	Retainer	57	Drag Washer A	88	Right Side Cover Screw — 1146189
27	Washer — 1146823	58	Drive Gear — 1145574	89	Bearing Plate — 1146013
28	Click Claw — 1145768	59	Key Washer B	90	Ball Bearing — 1145096
29	Click Cam	60	Drag Washer B — 1146822	91	Ball Bearing — 1145094
30	Pin	61	Eared Washer — 1146831	92	Retainer — 1146054
31	Spring — 1146712	62	Key Washer A		

(51)