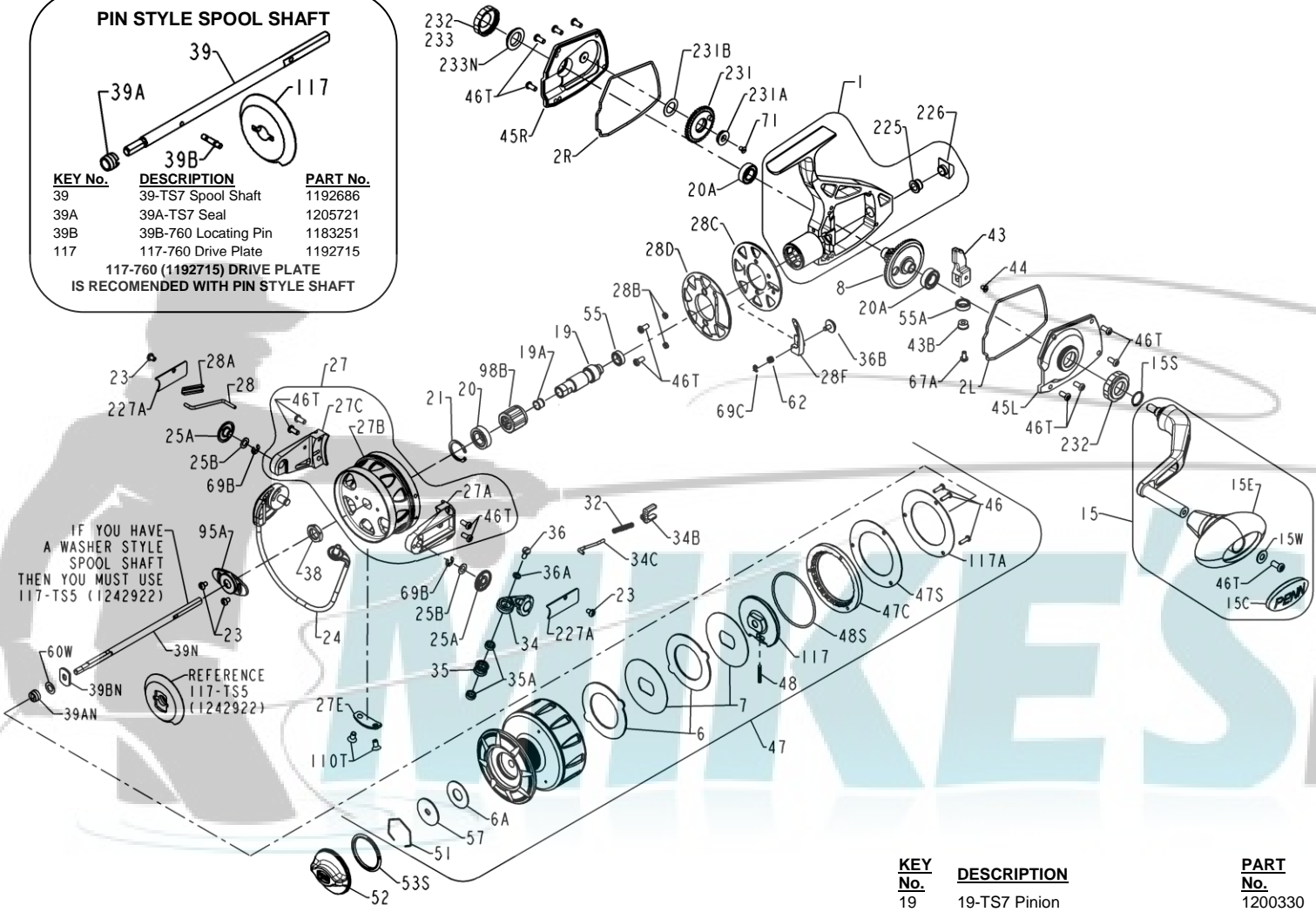
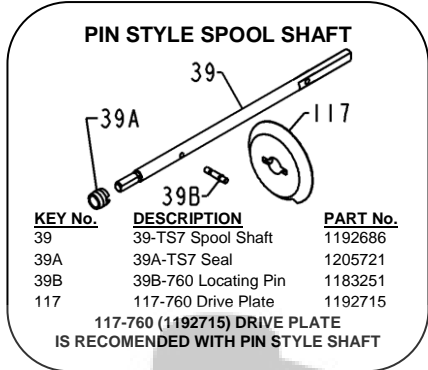




PARTS LIST FOR MODELS TRQS7E-B (Black) & TRQS7E-G (Gold)
REEL ASM NO'S 1227753 (TRQS7E-B) & 1227754 (TRQS7E-G)



IF YOU HAVE A WASHER STYLE SPOOL SHAFT THEN YOU MUST USE 117-TS5 (1242922)

KEY No.	DESCRIPTION	PART No.
1	1-TS7B Housing Asm (Black)	1200324
1	1-TS7G Housing Asm (Gold)	1200325
2L	2L-TS7 Left Housing Gasket	1200326
2R	2R-TS7 Right Housing Gasket	1200327
6	6-950M Eared Drag Washer (2 req)	1190981
6A	6-309 Drag Washer	1180917
7	7-TS7 Keyed Drag Washer (2 req)	1192588
8	8-TS7 Gear Assembly	1192589
15	15-TS7B Handle Asm (Black)	1200328
15	15-TS7G Handle Asm (Gold)	1200329
15C	15C-TS7 Handle Knob Cap	1226716
15E	15E-TS7 Knob	1229393
15S	15S-TS7 Handle Seal	1200419
15W	15W-TS7 Washer	1229399

KEY No.	DESCRIPTION	PART No.
19	19-TS7 Pinion	1200330
19A	19A-TS7 Pinion Bushing	1192606
20	20-TS7 Pinion Ball Bearing	1191260
20A	20A-TS7 Gear Ball Bearing (2 req)	1191263
21	21-TS7 Retaining Ring	1192641
23	23-750 Cover Screw (4 req)	1181953
24	24-TS7 Bail Wire Assembly	1191329
25A	25A-TS7 Bail Bushing (2 req)	1200331
25B	25B-TS7 Bail Washer (2 req)	1200332
27	27-TS7B Rotor Assembly (Black)	1200333
27	27-TS7G Rotor Assembly (Gold)	1200334
27A	27A-TS7BP Roller Arm (Black)	1280971
27A	27A-TS7GP Roller Arm (Gold)	1280972
27B	27B-TS7B Rotor Cup (Black)	1229737
27B	27B-TS7G Rotor Cup (Gold)	1229738
27C	27C-TS7B Cam Arm (Black)	1229749
27C	27C-TS7G Cam Arm (Gold)	1229750
27E	27E-TS7 Balance Weight	1200335

KEY No.	DESCRIPTION	PART No.
28	28-TS7 Trip Lever	1200336
28A	28A-TS7 Trip Lever Guide	1200337
28B	28B-TS7 Friction Ring Bushing (2 req)	1200338
28C	28C-TS7B Rotor Flange (Black)	1200339
28C	28C-TS7G Rotor Flange (Gold)	1200340
28D	28D-TS7 Friction Ring	1200341
28F	28F-TS7 Trip Ramp	1200342
32	32-950M Bail Spring	1182741
34	34-TS7 Bail Arm Assembly	1191639
34B	34B-TS7 Pivot Support	1200343
34C	34C-760 Pivot Arm	1191658
35	35-TS7 Line Roller	1205239
35A	35A-950M Ball Bearing (2 req)	1182951
36	36-750 Line Roller Screw	1183016
36A	36A-TS5 Lock Washer	1221606
36B	36-TS7 Trip Switch	1200344
38	38-9500 Rotor Nut	1183160
39N	39N-TS7 Spool Shaft (Washer Style)	1251997
39AN	39AN-TS7 Drive Plate Seal	1251999
39BN	39BN-TS7 Locating Washer	1241979
43	43-TS7 Crosswind Block	1191815
43B	43B-TS7 C.W. Bearing Pilot	1192690
44	44-TS7 C.W. Shaft Retaining Screw	1225769
45L	45L-TS7E-B L.S. European (Black)	1201237
45L	45L-TS7E-G L.S. European (Gold)	1201238
45R	45R-TS7B R.S. Cover (Black)	1200347
45R	45R-TS7G R.S. Cover (Gold)	1200348
46	46-4300 Cover Screw (3 req)	1183567
46T	46T-TS7 Screw (15 req)	1191914
47	47-TS7B Spool Asm (Black)	1200349
47	47-TS7G Spool Asm (Gold)	1200350
47C	47C-TS7 Drag Cover	1192691
47S	47S-TS7 Drag Seal	1191959
48	48-5600 Click Tongue Asm	1183710
48S	48S-TS7 O-Ring	1211091
51	51-8000CV2 Retaining Ring	1245795
52	52-TS7B Drag Knob Asm (Black)	1200351
52	52-TS7G Drag Knob Asm (Gold)	1200352
53S	53S-TS7 Drag Knob Seal	1211093
55	55-TS7 Ball Bearing	1192029
55A	55A-TS7 Bearing	1203081
57	57-760 Keyed Drag Washer	1192695
60W	60W-TS7 Spool Shim	1242146
62	62-TS7 Trip Switch Spring	1200353
67A	67A-70 Screw	1184111
69B	69B-4400 Retaining Ring (2 req)	1184128
69C	69B-50 Trip Retaining Ring	1184125
71	71-TS7 Flat Hd Screw	1200354
95A	95A-TS7 Rotor Nut Cover	1192704
98B	98B-760 Clutch Bearing	1200355
110T	110T-50 Screw (2 req)	1184449
117	117-TS7 Drive Plate	1242923
117A	117A-TS7 Seal Cover	1192717
225	225-TS7 Rear Bushing	1192739
226	226-TS7 Rear Cap	1192470
227A	227A-TS7B Arm Cover (Black) (2 req)	1200356
227A	227A-TS7G Arm Cover (Gold) (2 req)	1200357
231	231-TS7 Crosswind Gear Asm	1192740
231A	231A-TS7 Crosswind Gear Bushing	1192741
231B	231B-TS7 Crosswind Gear Washer	1192742
232	232-TS7B Open Cover (Black) (2 req)	1200358
232	232-TS7G Open Cover (Gold) (2 req)	1200359
*233	*233-TS7G Closed Cover (Gold)	*1200361
233N	233N-TS7B Bearing Cap (Black)	1253566
233N	233N-TS7G Bearing Cap (Gold)	1253568
*	Optional - Closed Cover (Gold) ONLY	
*Note	If you are replacing a Closed Cover with an Open Cover then you must also order a Cap.	