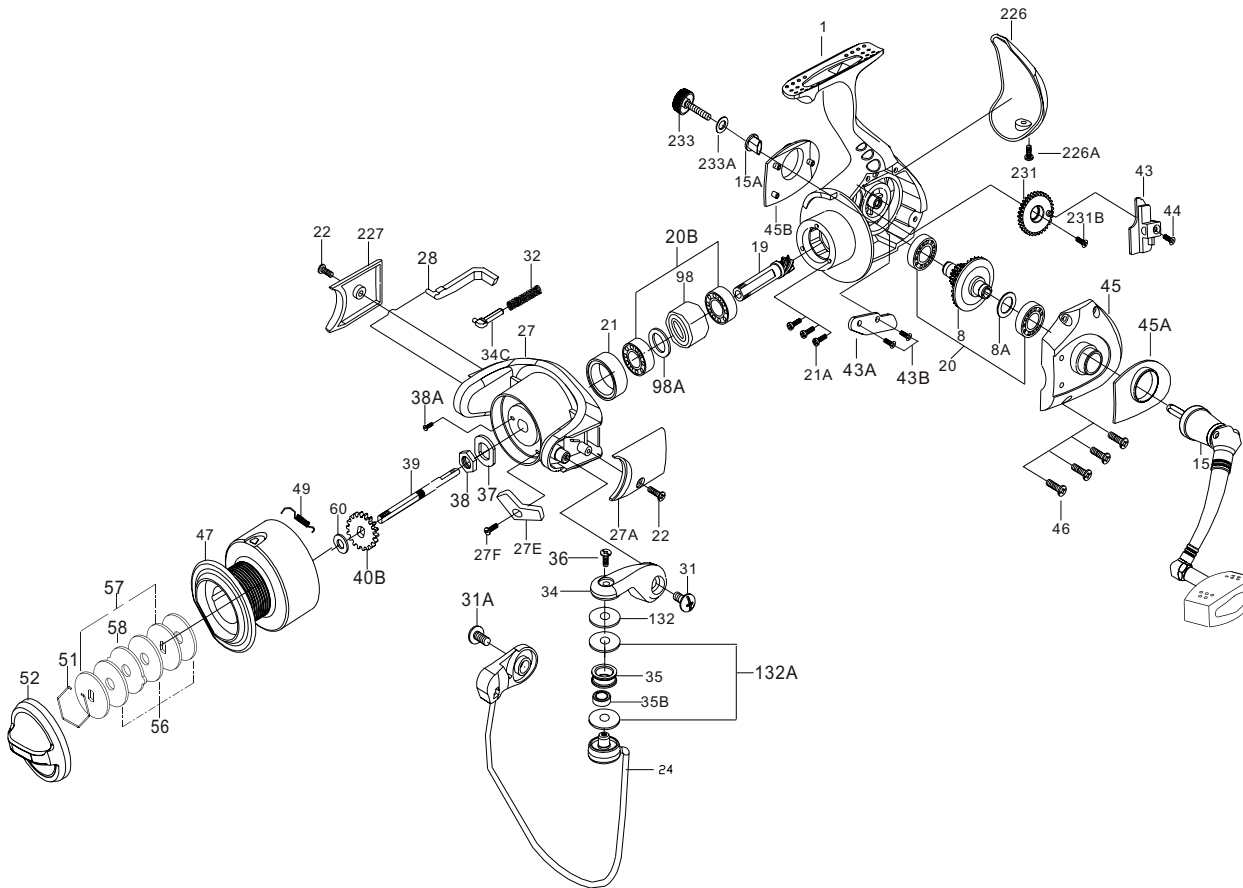




PARTS LIST FOR MODEL SV8000



KEY

NO. Description

1	Housing
8	Main Gear Assembly
8A	Main Gear Shim
15	Handle Assembly
15A	Handle Retaining Bushing
19	Pinion Gear
20	Main Gear Ball Bearing(2req.)
20B	Pinion Ball Bearing(2 req.)
21	Collar
21A	Bearing Mounting Screw(3 req.)
22	Cover Screw(2 req.)
24	Bail Wire
27	Rotor Cup
27A	Bail Pivot Cover
27E	Balance Weight
27F	Balance Weight Screw
28	Trip Lever
31	Bail Arm Screw(2req.)
31A	Bail Wire Screw
32	Bail Spring
34	Bail Arm
34C	Pivot Arm
35	Line Roller
35B	Line Roller Bushing
36	Bail Stud Screw
37	Rotor Washer
38	Rotor Nut
38A	Rotor Nut Screw
39	Spool Shaft
40B	Click Ratchet
43	Crosswind Block
43A	Crosswind Block Plate
43B	Crosswind Block PlateScrew
44	Crosswind Block Screw
45	Housing Cover
45A	L.S.Rear cap
45B	R.S.Rear cap
46	Housing Cover Screw(4 req.)
47	Spool Assembly
49	Spool Click Spring
51	Retaining Ring
52	Drag Knob
56	Friction Drag Washer(3req.)
57	Keyed Washer(2 req.)
58	Drag Washer Earred
60	Thrust Washer
98	Clutch Retainer
98A	Clutch Shim
132	Roller Washer
132A	Roller Washer (Plastic)(2req.)
226	Rear Cap
226A	Rear Cap Screw
227	Cam Cover
231	Crosswind Gear
231B	Crosswind Gear Screw
233	Bearing Cover
233A	Bearing Cover Washer

PART

NO.

0018000SV
008 8000CV
008A8000CV
015N 8000CV
015A8000CV
019 8000SV
020 8000CV
020B8000CV
021 8000CV
021A8000CV
022 500CV
024 8000CV
027 8000CV
027A8000CV
027E8000CV
027F2000CV
028 8000CV
031 8000CV
031A8000CV
032 8000CV
034 8000CV
034C8000CV
035 8000CV
035B8000SV
036 2000CV
037 8000CV
038 8000CV
038A2000CV
039 8000SV
040B8000CV
043 8000SV
043A8000SV
043B5000CV
044 8000CV
045 8000SV
045A8000SV
045B8000SV
046 8000CV
047 8000CV
049 8000CV
051 8000CV
052 8000SV
056 8000CV
057 8000CV
058 8000CV
060 8000CV
098 8000CV
098A8000CV
132 8000CV
132A8000CV
226 8000SV
226A8000CV
227 8000CV
231 8000SV
231B5000CV
233N 8000CV
233A 8000SV