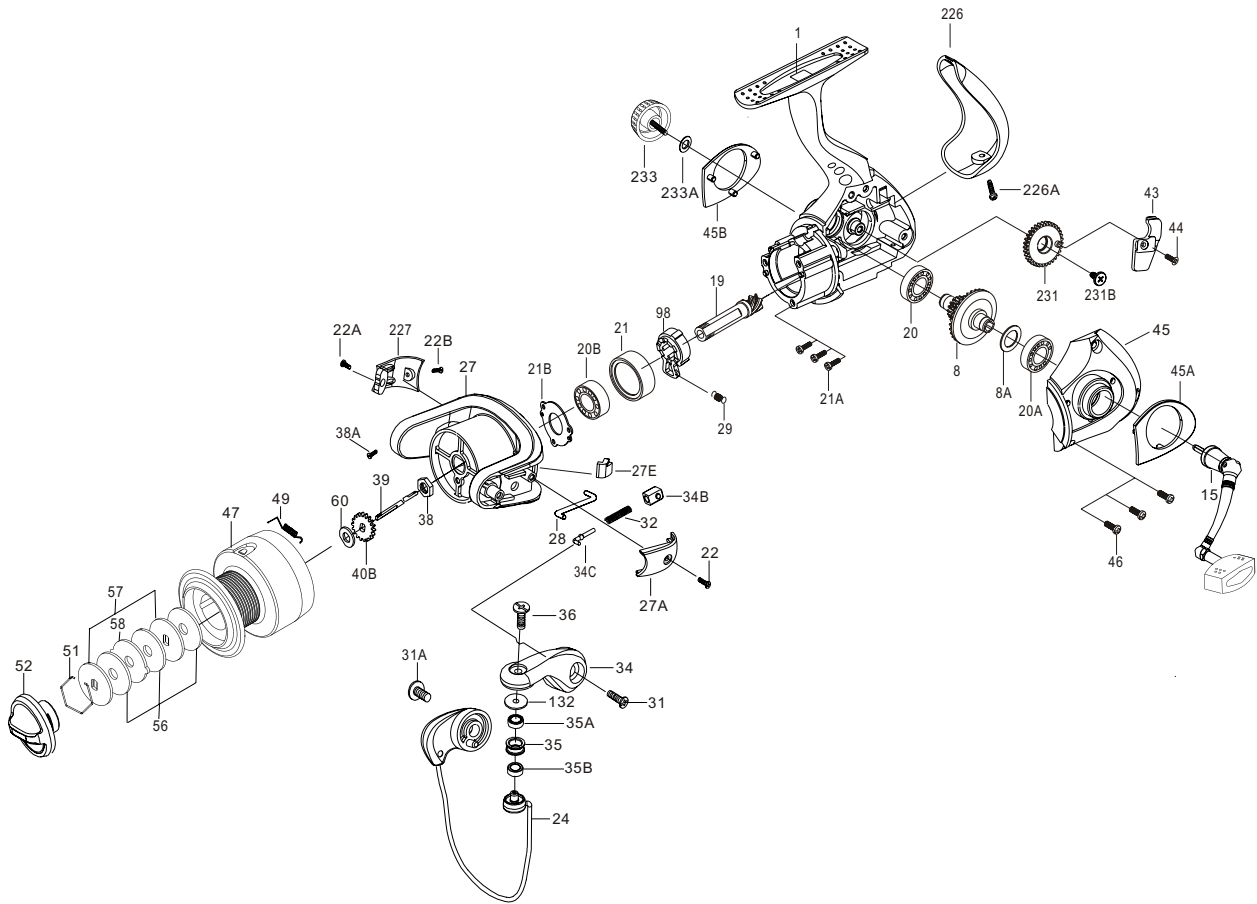




PARTS LIST FOR MODEL SV4000



KEY

NO.	DESCRIPTION
1	HOUSING
8	Main Gear Assembly
8A	Main Gear Shim
15	Handle Assembly
19	Pinion Gear
20	Housing Ball Bearing
20A	Housing Cover Ball Bearing
20B	Pinion Ball Bearing
21	Collar
21A	Bearing Mounting Screw(3 req.)
21B	Ball Bearing Fixed Washer
22	Ball Arm Cover Screw
22A	Side Cover Screw
22B	Side Cover Screw
24	Bail Wire
27	Rotor Cup
27A	Bail Pivot Cover
27E	Balance Weight
28	Trip Lever
29	Spring
31	Bail Arm Screw
31A	Bail Wire Screw
32	Bail Spring
34	Bail Arm
34B	Pivot Guide
34C	Pivot Arm
35	Line Roller
35A	Line Roller Ball Bearing
35B	Line Roller Bushing
36	Bail Stud Screw
38	Rotor Nut
38A	Rotor Nut Screw
39	Spool Shaft
40B	Click Ratchet
43	Crosswind Block
44	Crosswind Block Screw
45	Housing Cover
45A	L.S.Rear cap
45B	R.S.Rear cap
46	Housing Cover Screw(3 req.)
47	Spool Assembly
49	Spool Click Spring
51	Retaining Ring
52	Drag Knob
56	Friction Drag Washer(3req.)
57	Keyed Washer(2 req.)
58	Drag Washer Earred
60	Thrust Washer
98	Clutch Retainer
132	Roller Washer
226	Rear Cap
226A	Rear Cap Screw
227	Cam Cover
231	Crosswind Gear
231B	Crosswind Gear Screw
233	Bearing Cover
233A	Bearing Cover Washer

PART

NO.	DESCRIPTION
001	4000SV
008	4000SV
008A	5000CV
015	4000SV
019	4000SV
020	500CV
020A	5000CV
020B	500CV
021	2000SV
021A	2000SV
021B	4000SV
022	2000SV
022A	2000SV
022B	2000SV
024	4000SV
024	4000SV
027	3000SV
027A	4000SV
027E	4000SV
028	4000SV
029	4000SV
031	2000CV
031	2000CV
032	2000SV
034	4000SV
034B	2000SV
034C	4000SV
035	4000SV
035A	2000CV
035B	2000SV
036	4000SV
038	2000CV
038A	2000CV
039	4000SV
040B	2000CV
043	4000SV
044	2000SV
045	4000SV
045A	4000SV
045B	4000SV
046	2000CV
047	4000SV
049	2000CV
051	2000CV
052	2000SV
056	2000CV
057	2000CV
058	2000CV
060	2000CV
098	4000SV
132	2000CV
226	4000SV
226A	2000SV
227	4000SV
231	4000SV
231B	2000SV
233	2000CV
233A	2000SV